

DOUGLAS

MANUFACTURING CO., INC.

300 INDUSTRIAL PARK DRIVE • PELL CITY, AL 35125
Tel. 205/884-1200 FAX 205/884-1206

CONVEYOR PRODUCTS FOR TODAY'S MATERIAL HANDLING



Distributed By



Index To Douglas Manufactured Products

	Page
Determining Pulley Face Widths	Below Index
Douglas Easy Quote Fax Form	1
Drum Pulleys & Weights	2
Wing Pulleys & Weights	3
Spiral Wing Pulley	4
Shafting	5
Permanent Magnetic Pulleys	6
Cross Belt & Suspended Permanent Conveyor Magnets	7
Electro Magnetic Separators	8
Pulley Lagging:	
Vulcanized	9
"Replaceable Wing"	9
"Replaceable Rim"	10
Replaceable Rim Lagging Price List	11
Replaceable Rim Lagging Installation	12
Conveyor Covers	13
Belt Cleaning Systems	14
Belt Plow	15
Elevator Buckets	16
Impact Solutions	17
Take Ups:	
Gravity Takeup Assemblies	17
"Slide Tube" Take Up	18
Top Angle Protected Screw	19
TMS MD Screw Take Up	19
2 Roll Belt Idlers	20
Live Shaft Rubber Disc Idlers	20
Urethane Idler Roll Covers	20
UHMW (Solid) Roll Troughing Idlers	21
Deflection Wheels	21
Beater Rolls	22
Terms & Conditions, Safety & Liability Disclaimer	23
Notes and Figuring Space	Page 24 & Inside Back Cover

Determining Pulley Face Width

To select the proper pulley face width, the belt width size is necessary. Two rules apply:

(1) Up to and including 42 inch belt width, 2 inches should be added to the face dimension. For example, the pulley width for a 24 inch wide belt should be 26 inches.

(2) Above 42 inches, 3 inches should be added. The pulley width for a 48-inch wide belt should be 51 inches.

Necessary Industry Procedure For Ordering:

1. Diameter of Pulley
2. Face Width of Pulley
3. Shaft Size.

Dimensions must be given in the above order.

Note: Douglas Manufacturing Co., Inc. policy is to constantly improve our product line. Because of this, all specifications are subject to change without notice.



DOUGLAS EASY QUOTE FORM



PHOTO COPY THIS PAGE, FILL OUT PRODUCT SECTIONS
AND FAX TO DOUGLAS FOR FAST SERVICE—FAX # 205/884-1206.

_____	_____	_____	<input type="checkbox"/> Mining	<input type="checkbox"/> Wood
<i>Your Company</i>	<i>Date</i>	<i>Your Customer ID#</i>	<input type="checkbox"/> Grain	<input type="checkbox"/> Coal
_____	_____	_____	<input type="checkbox"/> Cement	<input type="checkbox"/> Paper
<i>Your Name</i>	<i>Phone</i>	<i>FAX Number</i>	<input type="checkbox"/> Sand / Gravel / Rock	

PULLEYS

- Standard Heavy Duty
 Mine Duty
 Mill Duty

• If belt width and pulley width are the same, please verify width of pulley _____
 • If tail pulley verify drum or wing style. _____
 Bushing Style QD TL Key Way is Full Shallow

Crown Flat

1. Drum Wing Magnetic Diameter _____ Face _____ Bore _____ Belt Width _____ Cost _____
 2. Drum Wing Magnetic Diameter _____ Face _____ Bore _____ Belt Width _____ Cost _____
 3. Drum Wing Magnetic Diameter _____ Face _____ Bore _____ Belt Width _____ Cost _____

PULLEY TOTAL COST

RUBBER LAGGING

Replaceable Vulcanized

THICKNESS:

GROOVE PATTERN:

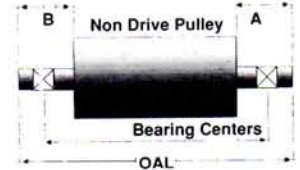
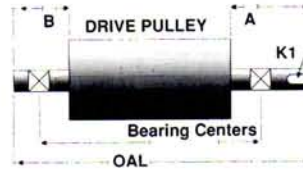
1. Size 1/4" 3/8" 1/2" Herringbone Groove Diamond Groove Smooth (PLAIN) Machine Finished Cost _____
 2. Size 1/4" 3/8" 1/2" Herringbone Groove Diamond Groove Smooth (PLAIN) Machine Finished Cost _____
 3. Size 1/4" 3/8" 1/2" Herringbone Groove Diamond Groove Smooth (PLAIN) Machine Finished Cost _____

QUANTITY

COST EACH

LAGGING TOTAL COST

SHAFTING



1. OAL _____ Ext. B _____ Ext. A _____ Turn Down Ø _____
 2. OAL _____ Ext. B _____ Ext. A _____ Turn Down Ø _____
 3. OAL _____ Ext. B _____ Ext. A _____ Turn Down Ø _____

1. Shaft Dia. _____ No. of Keys _____ Key Bushings Yes No K1 Width _____ Depth _____ Length _____ COST EA. _____
 2. Shaft Dia. _____ No. of Keys _____ Key Bushings Yes No K1 Width _____ Depth _____ Length _____ COST EA. _____
 3. Shaft Dia. _____ No. of Keys _____ Key Bushings Yes No K1 Width _____ Depth _____ Length _____ COST EA. _____

SHAFTING TOTAL COST

TAKEUPS

Slide Tube Top Angle TMS

TRAVEL LENGTH _____

BEARING SIZE _____

QUANTITY

COST EACH

TAKEUP TOTAL COST

IDLERS

SEALED REGREASEABLE UHMW POLYMER 2 ROLL
 CEMA "B" "C" Belt Width _____ Diameter of Roll _____

Troughing Idler: Angle 20° _____ 35° _____ 45° _____ Style _____

Throughing Idler: QUANTITY _____ COST EACH _____ TROUGHING IDLER TOTAL COST _____

Return Idlers: QUANTITY _____ COST EACH _____ RETURN IDLER TOTAL COST _____

Idler (Other): QUANTITY _____ COST EACH _____ TYPE _____ COST _____

IDLER TOTAL COST

COMMENTS:

DELIVERY NEEDED

Regular _____ Date _____ Rush _____ Date _____

FAXED PRICE INFORMATION FROM
DOUGLAS MANUFACTURING Co., Inc.

Douglas Sales Representative

Date

DOUGLAS MANUFACTURING CO., INC.

300 INDUSTRIAL PARK DRIVE - PELL CITY, ALABAMA 35125 - PHONE (205) 884-1200 - FAX (205) 884-1206



CROWN FACE DRUM STYLE CONVEYOR PULLEYS

CAUTION: NOT TO BE USED AS A TRANSMISSION DRIVE PULLEY

CONSTRUCTION:

- A. Our drum pulleys are rolled in specially designed plate rolls with a crown built into the rolls. In this way you receive a uniformly crowned conveyor pulley each time you order.
- B. Full depth submerged arc welds with hubs welded on both the inside and outside of the end disc.
- C. Popular styles of tapered compression hubs available.
- D. Crown or straight face style is available.
- E. Engineered pulleys available for special applications.
- F. Fast delivery and service designed for your needs is available.



Mine Duty
Mill Duty

® Registered Trademark of Emerson Electric

"QD"® INTERCHANGEABLE BUSHINGS



Drum Pulleys—Weights

ALL WEIGHTS ARE APPROXIMATE

DIA.	HUB	Max. Bore	Face Width													
			12	14	16	18	20	22	24	26	30	32	36	38	44	46
8	SF	2 1/2	33	35	38	41	43	46	48	54	60	63	69	71		
	SF	2 1/2	41	44	47	50	54	57	60	70	76	82	88	91		
	E	3	61	65	68	71	75	78	81	88	95	98	104	108		
10	E	3 1/2	72	75	78	81	85	88	91	98	105	106	114	118		
	SF	2 1/2	49	53	57	61	65	69	73	87	95	102	110	114		
	E	3	73	77	81	84	88	92	96	106	114	118	126	130		
12	E	3 1/2	85	89	93	97	101	105	109	118	126	130	138	142		
	SF	2 1/2	59	64	68	73	77	82	87	106	115	124	154	160		
	E	3	85	90	94	99	104	108	113	126	136	140	176	183		
14	E	3 1/2	109	114	118	123	127	132	137	150	159	164	185	190		
	JS	4	126	131	135	140	145	149	154	166	175	180	200	210		
	SF	2 1/2	79	86	93	100	107	114	121	147	161	174	183	190	210	220
16	E	3	109	116	123	130	137	144	151	170	184	191	200	217	240	255
	F	3 1/2	138	145	152	159	166	173	180	199	213	220	230	236	255	264
	JS	4	163	170	177	184	191	198	205	223	237	244	253	260	280	288
18	SF	2 1/2	92	100	108	116	124	132	140	172	187	203	214	222	245	254
	E	3	125	133	141	149	157	164	172	196	212	220	230	240	260	270
	F	3 1/2	162	170	178	186	194	202	210	233	249	256	268	275	295	305
20	JS	4	187	195	203	211	218	226	234	256	272	280	290	298	320	330
	SF	2 1/2	106	114	123	132	141	150	158	197	215	225	235	245	260	285
	E	3	123	132	140	149	158	167	175	204	222	230	245	260	295	300
24	F	3 1/2	130	139	148	156	165	174	183	211	228	237	250	265	290	305
	JS	4	158	167	175	184	193	202	210	238	255	264	275	290	315	325
	MS	5	153	163	174	184	195	205	216	256	277	288	305	360	450	465
30	E	3	246	263	279	296	312	329	345	420	440	452	472	580	630	640
	F	3 1/2	253	270	286	303	319	336	352	427						
	MS	5	280	297	313	330	347	363	380	453						
36	F	3 1/2	347	367	387	407	427	446	551							
	MS	5	374	394	414	434	454	474	578							
	NS	6	484	504	524	544	564	664	774							

RINGFEDDER HUBS®

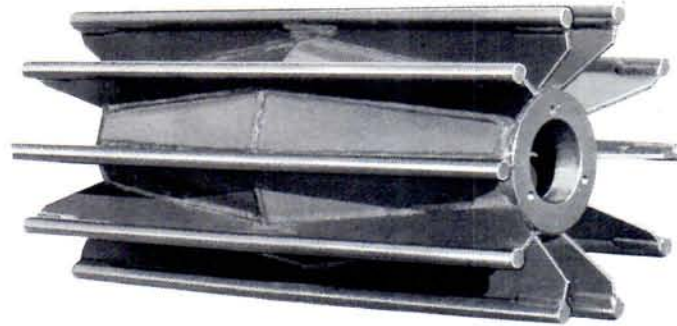


RINGFEDDER®
Locking Assembly

® Registered Trademark of Ringfedder Corp.

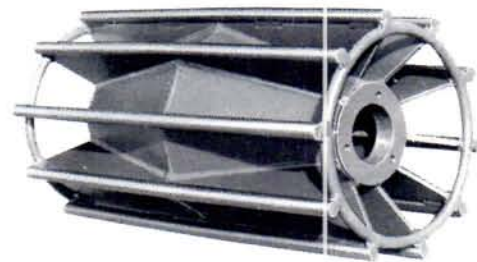


WING STYLE CONVEYOR PULLEYS



CONSTRUCTION:

- A. Full length welds
- B. Jig welded for uniform wing spacing and concentricity
- C. Crown or straight face available
- D. Popular styles of tapered compression hubs are in stock
- E. We manufacture so delivery can be suited to your needs
- F. Special design engineered pulleys are offered
- G. Full Round Face Bar for extra pulley life and smooth belt to pulley contact.



Mine Duty—Mill Duty

Shown with optional Stabilizing Rings
Stabilizing Ring optional on Heavy Duty or Mine Duty Wing

Wing Pulleys—Weights

ALL WEIGHTS ARE APPROXIMATE

DIA.	HUB	Max. Bore	Face Width																					
			12	14	16	18	20	22	24	26	30	32	36	38	44	46	51	54	57	60	63	66		
8	SD	1 1/2	24	33	35	38	44	46	50	53	65	68												
10	SF	1 1/2	33	39	46	52	55	61	67	71	83	87	99	104										
		2 1/2	43	46	52	59	62	69	74	77	90	94	104	109										
		3	49	56	60	65	66	73	77	79	93	104	114	119										
		3 1/2	62	69	72	78	79	83	88	90	103	114	128	129										
12	SF	1 1/2	50	57	63	71	80	86	95	103	116	125	140	147	170									
		2 1/2	54	62	67	76	83	89	97	105	118	126	141	146	169									
		3	60	67	73	82	91	98	106	115	129	139	154	161	188									
		3 1/2	65	72	78	87	96	103	111	120	134	144	159	166	193									
14	SF	2 1/2	67	75	83	92	100	110	119	129	146	153	173	183	207	217	239							
		3	70	79	87	98	107	117	126	136	156	165	185	196	223	234	256							
		3 1/2	78	87	96	107	115	126	136	148	167	175	197	208	237	247	271							
		4	83	92	101	112	120	131	141	153	172	180	202	213	242	252	276							
16	SF	2 1/2	76	86	97	107	118	127	235	147	167	178	200	206	243	252	276							
		3	77	89	100	110	122	131	141	154	175	186	205	218	254	263	290							
		3 1/2	86	95	107	118	128	141	150	162	183	195	215	229	263	275	303							
		4	102	116	126	137	147	151	171	183	204	215	239	247	286	298	325							
18	SF	2 1/2	98	107	120	133	144	160	175	188	214	225	253	267	306	320	351							
		3	99	110	124	136	151	164	177	192	218	233	260	274	314	330	364							
		3 1/2	102	120	131	144	158	173	183	200	226	240	269	285	325	340	373							
		4	121	135	149	160	173	185	200	213	238	255	281	297	334	351	384							
20	SF	2 1/2	106	121	132	148	165	174	190	205	234	247	279	292	334	350	386	410	430	455	474	500		
		3	108	124	137	152	170	182	197	212	242	260	290	304	350	363	401	426	450	475	495	516		
		3 1/2	116	134	146	161	176	190	205	220	255	268	295	312	357	371	410	431	453	479	500	520		
		4	130	149	160	175	191	205	220	234	265	279	310	326	371	389	422	445	467	490	509	535		
24	E	3	181	206	223	258	282	310	336	360	414	437	495	531	612	640	705	745	770	809	845	875		
		3 1/2	200	224	255	279	305	330	356	380	435	438	510	535	615	644	708	749	780	819	856	887		
		4	201	225	250	275	301	326	350	376	428	453	509	535	612	642	707	754	790	829	867	899		
		5			272	295	321	347	371	395	445	469	520	560	645	662	729	765	821	860	899	933		
30	E	3		279	296	326	357	387	417	449	519	552	622	652	747	772	852	902	952	1002	1052	1102		
		3 1/2		285	302	332	365	396	426	457	527	562	632	669	757	787	861	911	962	1010	1062	1112		
		4		291	308	337	370	402	435	467	537	572	642	672	767	797	870	920	972	1019	1072	1125		
		5		329	362	392	425	460	492	555	592	662	692	787	817	888	937	992	1037	1092	1147			
36	F	3 1/2		409	455	502	532	576	626	677	772	823	917	967	1117	1167	1302	1382	1462	1547	1627	1707		
		4		411	459	507	541	581	631	682	777	827	922	972	1122	1172	1307	1387	1467	1552	1632	1712		
		5		423	470	516	555	595	645	695	790	840	935	985	1135	1185	1322	1400	1480	1565	1645	1725		
		6		437	475	525	562	607	657	707	802	852	947	997	1147	1197	1332	1412	1502	1577	1657	1737		

This catalog and all contents copyright © Jan. 1993, Douglas Manufacturing Co., Inc., Pell City, AL 35125



SPIRAL WINGS

COMPLETE WITH TAPERED BUSHINGS

INDUSTRIAL LIST PRICE
SUBJECT TO DISCOUNT



Our Spiral Wing is designed to promote self cleaning by the "action" of helically wound steel bars formed over the wing fins. This helical action helps move material to each side of the tail pulley.

The flat bar also helps smooth out the vibrating belt movement sometimes experienced with standard wing pulleys.

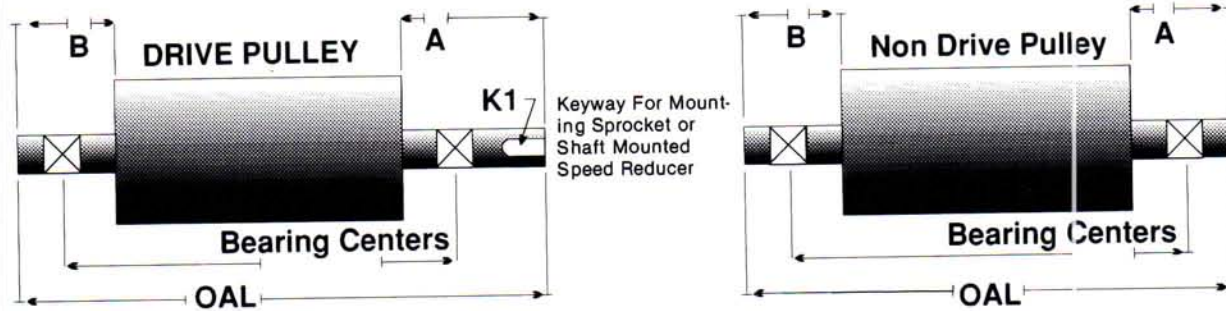
The basic wing design of the Spiral Wing also helps eliminate material build up experienced on many drum tail pulley applications.

PULLEY FACE WIDTH

DIA	HUB	MAX BORE	26	32	38	44	DIA	HUB	MAX BORE	26	32	38	44
10	SF	2½	490	605	711		20	SF	2½	883	1076	1257	1405
								E	3	966	1166	1365	1531
12	SF	2½	569	696	826	947		F	3½	1051	1242	1414	1585
	E	3	627	771	912	1053		JS	4	1212	1390	1571	1749
								MS	5	1286	1465	1634	1826
14	SF	2½	640	788	948	1097							
	E	3	711	864	1042	1189	24	SF	2½	1055	1269	1457	1644
	F	3½	756	930	1076	1225		E	3	1339	1357	1554	1748
								F	3½	1221	1414	1614	1805
16	SF	2½	733	880	1061	1198		JS	4	1360	1535	1772	1971
	E	3	783	954	1154	1320		MS	5	1432	1635	1825	2017
	F	3½	847	1022	1212	1372		NS	6	1652	1882	2097	
	JS	4	977	1172	1334	1510							
18	SF	2½	808	982	1156	1303							
	E	3	888	1074	1270	1414							
	F	3½	960	1158	1314	1480							
	JS	4	1106	1294	1462	1640							
	MS	5	1214	1368	1555	1730							



CONVEYOR PULLEY AND SHAFT ASSEMBLIES



Complete shaft assemblies can be furnished, including pulleys, bearings or take-ups and collars which can be factory assembled on the shaft and shipped as complete units.

Engineering assistance is available for determining required shaft size, bearing type, etc.

Standard shafting will be furnished of cold finished medium carbon steel suitable for the majority of pulley applications. Turned and polished or turned, ground and polished shafting is available at additional cost.

Note: Shallow keys not recommended for Drive Pulleys.

LIST PRICE FOR SHAFTING				LIST PRICE FOR KEYSEATS & KEYS				
Dia.	Wt. Ft.	Base Price	Price Inch	1	2	3	Max. Length	Extra Per Inch
1	2.67	\$13	\$.33	\$ 26	\$ 40	\$ 54	6"	\$.50
1 ³ / ₁₆	3.77	13	.33	27	41	55	6	.50
1 ⁷ / ₁₆	5.52	13	.45	28	54	69	6	1
1 ¹⁵ / ₁₆	10.02	16	.82	30	61	79	6	1
2	10.68	16	.94	30	61	79	6	1
2 ³ / ₁₆	12.75	17	.99	37	65	80	6	1
2 ⁷ / ₁₆	15.84	20	1.30	42	68	87	6	1
2 ¹ / ₂	16.69	22	1.35	43	69	88	6	1
2 ¹⁵ / ₁₆	23.04	24	1.90	50	82	108	6	1
3 ⁷ / ₁₆	31.55	30	3.00	60	88	120	9	1
3 ¹⁵ / ₁₆	41.40	36	3.85	62	101	142	9	1
4 ⁷ / ₁₆	52.58	51	6.08	68	117	167	9	1
4 ¹⁵ / ₁₆	65.10	51	8.20	75	134	192	12	1
5 ⁷ / ₁₆	78.95	61	10.10	90	170	230	12	2
5 ¹⁵ / ₁₆	94.14	61	12.00	100	180	240	12	2

LIST PRICES FOR EACH SHAFT JOURNAL

Maximum Length of Journal at Listed Price 14 Inches



Reduction in Dia.	1/4 Inch	1/2 Inch	3/4 Inch	1 Inch
2 ⁷ / ₁₆	65	70	78	81
2 ¹⁵ / ₁₆	71	78	84	89
3 ⁷ / ₁₆	78	89	97	105
3 ¹⁵ / ₁₆	84	94	105	117
4 ⁷ / ₁₆	109	117	130	141
4 ¹⁵ / ₁₆	130	141	154	162
5 ⁷ / ₁₆	149	162	178	194
5 ¹⁵ / ₁₆	170	194	203	219



PERMANENT MAGNETIC PULLEYS

DESIGNED AND BUILT BY "CONVEYOR PULLEY PEOPLE"

Quick Service
 Normal Pulley standards
 Wide range of diameter and face widths
 Lagging

Shafts keyed and assembled quickly in our shop
 We can engineer and recommend pulley diameter, face width and shaft diameter

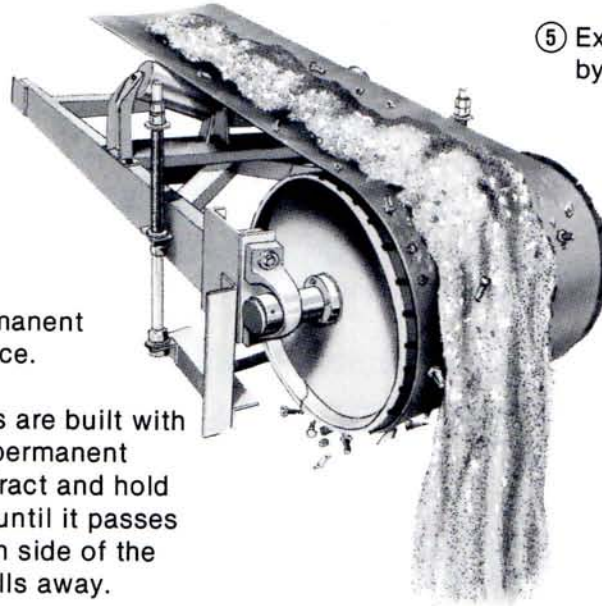
Available In Standard Heavy Duty (SHD) and Super Hi Power (SHP)

① Reduce labor costs of sorting ferrous and non metallic materials

② Removes tramp metal from coal, grain, wood chips, sand, food products.

③ 99 year guarantee of permanent magnetic field performance.

④ Douglas magnetic pulleys are built with stainless steel rims and permanent ceramic magnets that attract and hold ferrous metal to the belt until it passes the magnet on the bottom side of the pulley, when the metal falls away.



⑤ Explosion & fire protection by removal of tramp metals.

⑥ Removes tramp metals from rock products, fertilizers, plastic.

⑦ Can be furnished complete with split tapered bushings, crown face, lagging shaft and pillow block assemblies for ease of installation.

For General Guidelines, Please design around the following general requirements:

PULLEY DIA.	RPM	FPM	BURDEN DEPTH
8	40	84	2
10	40	105	2½
12	40	126	2½
14	40	146	3
16	40	167	3
18	40	189	3½
20	40	210	4
24	40	251	5
30	40	314	6
36	37	350	7
42	34	375	7
48	32	400	7

PERMANENT MAGNETIC PULLEY EASY FAX FORM

Information necessary for proper sizing and pricing.

Your Company _____ Your Name _____

City _____ State _____ Fax _____ Ph. _____

Pulley Diameter _____ Face _____ Bore _____

Conveyed Material _____ Weight _____ Size _____ Tons Per Hour _____

Conveyor Capacity in TPH or Cubic Ft. Hr. _____ Max. Burden Depth _____

Wetness of Material _____ Belt Width _____ Belt Speed _____

Conveyor Length _____ Motor HP _____

Type, Size & Quantity of Ferrous Metal to be Separated _____

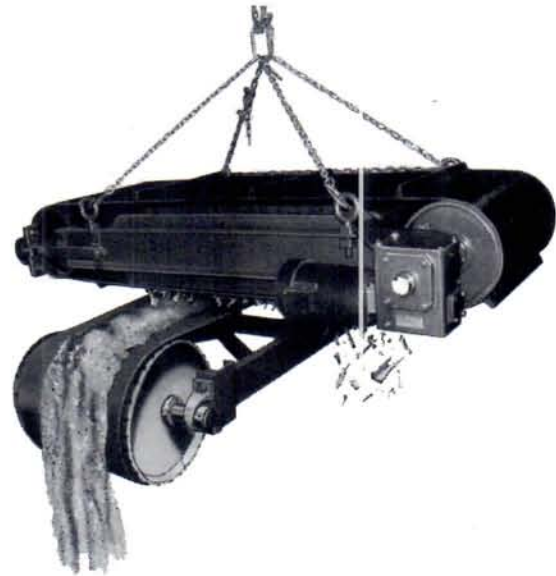
Cost \$ _____



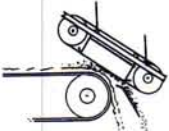
CROSS BELT PERMANENT MAGNETIC SEPARATORS

Maximum Ferrous Metals Removal From Fast Moving Bulk Materials With Douglas Cross Belt Magnetic Separator

- ① Permanent Magnets operate without electrical power. Drive motor utilizes standard three phase electrical hookup.
- ② 99 year guarantee of permanent magnetic field performance.
- ③ For 24" to 72" belts with conveyor speeds to 700 FPM
- ④ Optional hot vulcanized or stainless steel cleats prevent material from tumbling.
- ⑤ Self cleaning; releases metals into catch bin.
- ⑥ Shipped complete and ready for service.



CROSS BELT MOUNT



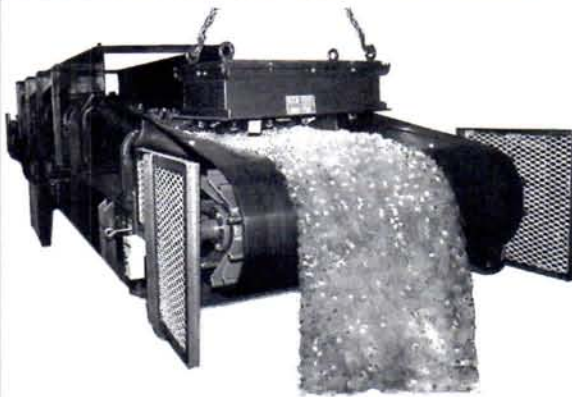
IN LINE ANGLE MOUNT

BELT WIDTH	LIST PRICE	OAL	OAD	OAW	WT.
24	12,000	80"	11"	35"	2500
30	13,700	85"	11"	41"	4200
36	15,500	100"	11"	47"	5000
42	18,000	100"	11"	53"	6800
48	21,890	100"	11"	59"	7500
54	27,500	106"	11"	65"	8000
60	36,000	110"	11"	71"	9000
72	45,500	110"	11"	83"	11,000

OAL "Overall Length" OAD "Overall Depth" OAW "Overall Width" Not Inc. Drive

SUSPENDED PERMANENT CONVEYOR MAGNET

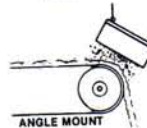
Use The Douglas Suspended Magnet To Clean Materials With Less Metal Contamination



- ① May be mounted in line over belt or angle mounted over discharge at pulley.
- ② Not self cleaning
- ③ Magnetic field strength is equal to cross belt separator
- ④ No electrical hook ups necessary.
- ⑤ 99 year guarantee of permanent magnetic field performance.
- ⑥ Available for belt size to 72"



IN LINE HORIZONTAL MOUNT



ANGLE MOUNT

BELT WIDTH	LIST PRICE	OAL	OAD	OAW	WT.
24	5500	34"	11"	18"	1100
30	7400	34"	11"	24"	1700
36	8950	34"	11"	30"	2000
42	10,900	34"	11"	36"	2400
48	12,000	34"	11"	42"	2900
54	14,900	34"	11"	48"	3000
60	17,000	34"	11"	54"	3500
72	20,000	34"	11"	60"	4100

CROSS BELT & SUSPENDED PERMANENT MAGNETIC SEPARATOR EASY FAX FORM

Information necessary for proper sizing and pricing. Cross Belt and Suspended.

Your Company _____ Your Name _____
 City _____ State _____ FAX _____ Ph. _____
 Cross Belt Suspended
 Conveyed Material _____ Wetness of Material _____
 Weight _____ Size _____ Tons Per Hour _____
 Conveyor Capacity in TPH or Cubic Ft. Hr. _____ Max. Burden Depth _____
 Conveyor Incline in Degrees _____ Belt Speed _____ Belt Width _____
 Type, Size & Quantity of Ferrous Metal to be Separated _____
 Cost \$ _____

This catalog and all contents copyright © Jan. 1993, Douglas Manufacturing Co., Inc., Pell City, AL 35125

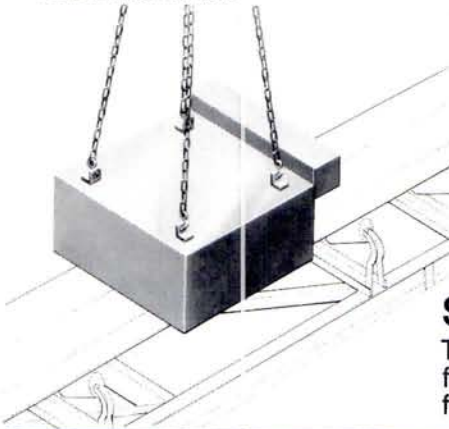
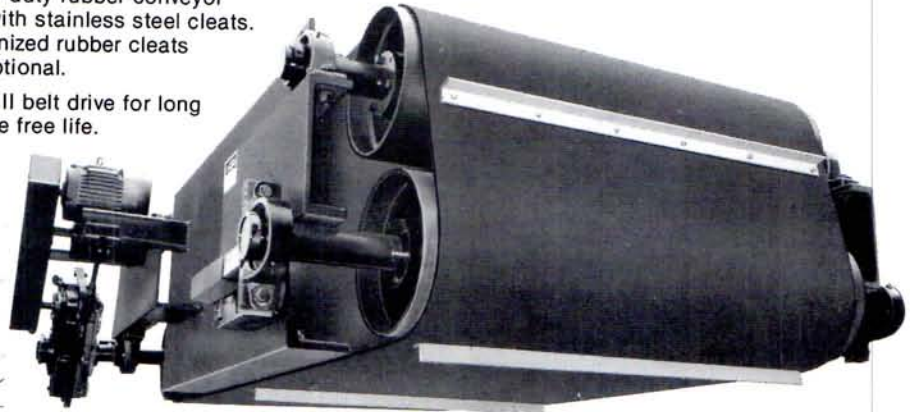


ELECTRO MAGNETIC SEPARATORS

Super Duty Self Cleaning Crossbelt

For the most severe applications to remove large quantities of tramp ferrous metals from heavy burdens and large quantities of material.

- 30% stronger than permanent magnetic separators. Produces maximum magnetic force.
- Powered by standard 230 or 460 volt power.
- Oil cooled coil dissipates heat. Insures cool running and trouble free service.
- Heavy duty rubber conveyor belt with stainless steel cleats. Vulcanized rubber cleats are optional.
- Class II belt drive for long trouble free life.



Super Duty Electromagnetic Suspended Separator

This super duty electromagnetic suspended separator has same magnetic force as crossbelt, but is recommended for less concentrated amounts of ferrous materials. Cleans easily by turning **off** power source.

Available For All Standard Belt Widths

1 year warranty. The internal coil assembly parts are warranted for 1 year from date of shipment provided oil chambers have been filled and maintained to cool the electromagnetic coil.

EASY QUOTE FAX FOR ELECTRO MAGNETIC SEPARATORS

INFORMATION NECESSARY FOR ACCURATE SIZING AND PRICING.

Your Company _____ Your name _____

City _____ State _____ Zip _____

Fax _____ Phone _____

Super Duty Electro Magnetic Crossbelt Super Duty Electro Magnetic Suspended

Conveyed Material _____ Tons Per Hour _____

Weight _____ Size _____ Wetness of Material _____

Conveyor Capacity in TPH or Cubic Ft. Hr. _____

Conveyor Incline in Degrees _____ Belt Speed _____ Belt Width _____

Type, Size & Quantity of Ferrous Metal to be Separated _____

Cost \$ _____

This catalog and all contents copyright © Jan. 1993, Douglas Manufacturing Co., Inc., Pell City, AL 35125



CONVEYOR PULLEY LAGGING

Furnished Plain Wrap Cloth Impression or Machine Finish • Herringbone or Diamond Pattern

1/4" LAGGING FACE

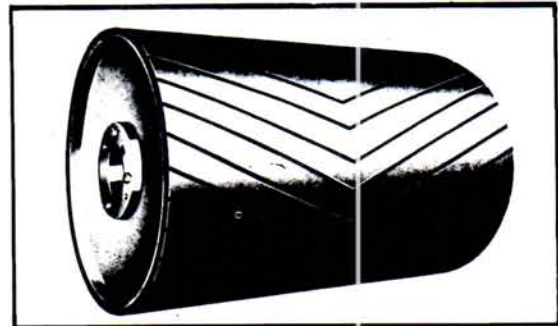
Dia.	12"	14"	18"	20"	22"	26"	32"	38"	44"	51"	57"	63"
4"	89	89	89	89	89	89	89	89	89	89	89	89
6"	89	89	89	89	89	89	89	89	89	94	106	119
8"	89	89	89	89	89	89	89	94	111	117	144	156
10"	89	89	89	89	89	89	100	117	133	133	178	200
12"	89	89	89	89	89	94	117	139	161	183	217	239
14"	89	89	89	89	94	111	139	167	189	217	250	278
16"	89	89	89	100	111	128	156	189	217	244	289	317
18"	89	89	100	111	122	144	178	211	244	278		
20"	89	89	100	122	133	161	200	228	229	306		
24"	89	106	133	150	161	194	239	283	328	372		
30"	111	128	167	183	206	239	294	350	406	459		
36"	128	156	200	222	244	289	344	422	489	528		
42"	183	183	233	261	283	339	417	494	572			
48"	228	228	294	328	361	422	522	622	717			

3/8" LAGGING FACE

Dia.	12"	14"	16"	18"	20"	22"	26"	32"	38"	44"	51"	57"	63"
10"	89	89	89	89	89	89	100	116	144	172	194	211	230
12"	89	89	89	89	94	100	122	150	178	206	233	253	275
14"	89	89	89	94	106	117	139	172	206	239	267	296	326
16"	89	89	100	110	122	147	161	198	233	272	306	336	366
18"	89	89	111	128	139	156	178	222	261	306	344	385	425
20"	94	106	122	139	156	172	200	244	294	339	383	422	465
24"	111	128	150	176	183	206	239	294	350	383	438	512	587
30"	139	161	183	211	233	256	300	372	444	516	588	660	732
36"	167	167	222	239	278	306	361	422	528	581	660	765	870
42"	194	194	261	283	328	356	401	491	586	681	771	892	1013
48"	244	244	328	367	413	441	565	618	829	892	966	1124	1284

1/2" LAGGING FACE

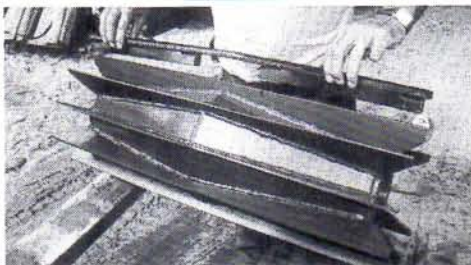
Dia.	12"	14"	18"	20"	22"	26"	32"	38"	44"	51"	57"	63"
12"	89	89	100	111	122	144	178	211	244	289	322	356
14"	89	89	117	128	144	167	206	244	289	339	378	397
16"	89	106	133	144	161	194	239	283	328	383	406	450
18"	100	117	150	167	183	217	267	317	367	411	458	506
20"	111	128	160	183	206	233	294	350	406	458	511	558
24"	133	156	200	222	244	289	356	400	464	550	611	675
30"	167	194	250	278	306	361	422	503	581	686	767	844
36"	200	233	300	333	367	411	506	600	697	822	919	1014
42"	233	272	350	369	406	481	592	703	814	961	1072	1183
48"	322	344	419	464	511	603	744	881	1025	1208	1347	1489



Rubber is hot vulcanized directly to the metal pulley surface.

It is available in either 1/4" - 3/8" or 1/2" thick rubber. Herringbone or Diamond Grooving is available.

REPLACEABLE WING LAGGING



These kits allow repairing of wing pulleys in the field and in some cases repairs can be made without removing the wing pulley from the conveyor.

REPAIR PROCEDURE

1. Simply burn off the remaining worn wing face bar evenly from each wing on the pulley.
2. Slip the Replaceable segment over the wing and tack weld the segment to the wing on both sides.

ORDERING INFORMATION

To order, simply order one set of segments for your specific diameter and face width wing pulley. Please check your number of wings with the Standard Chart "A" below. Pricing is figured from Pricing Chart "C" below by multiplying price per inch x face length (chart "B") x number of wings (chart "A"). **CAUTION! DO NOT** confuse belt width with pulley face width.

CHART "A"—STANDARD NUMBER OF WINGS

Dia.	10	12	14	16	18	20	24	30	36
Wings	8	10	10	10	12	12	14	16	18

CHART "B"—STANDARD PULLEY WIDTH

Belt Width	16	18	20	24	30	36	42	48	54	60	72
Pulley Face	18	20	22	26	32	38	44	51	57	63	75

CHART "C"—PRICE PER INCH

Replaceable Wing Steel Segment—.50 per inch
 Replaceable Wing Urethane Lagging—1.40 per inch
 Replaceable Wing Rubber Lagging—1.00 per inch



CUSTOMER SUPPLY CHANNEL WIDTH



REPLACEABLE RIM LAGGING



Weld-on or Bolt-on style available

“Hot Vulcanized”

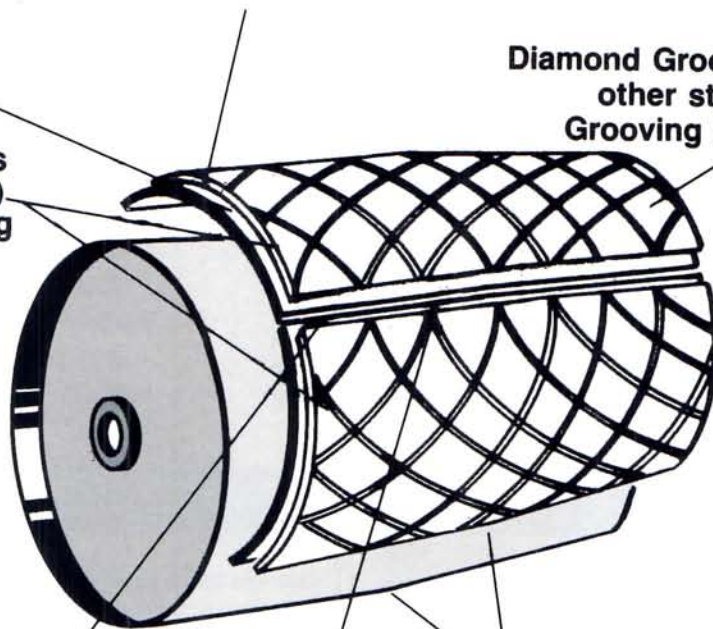
60 duro. Natural-SBR rubber is standard

Static conducting and Fire Resistant Rubber available

Heavy 1/8" Steel Backing
(rebuilds old pulleys)

Only 2 to 5 Large Segments
(made to fit specific pulley)
No Cutting • No Engineering

Diamond Groove Standard
other styles of
Grooving Available



Minimum Gap Between Segments
(more rubber for better traction)

Crown Rolled in 1/8" Steel Back
(helps belt tracking)

Less Welding
(1" weld every 6")
Quick and Simple Installation and
Replacement



Easy Ordering — Simply Determine Diameter and Face Width

This catalog and all contents copyright © Jan. 1993, Douglas Manufacturing Co., Inc., Pell City, AL 35125



“REPLACEABLE RIM LAGGING”[®]

Now You Can Purchase Lagging In Pre-Crowned Segments Which Have “Easy On — Easy Off” Characteristics

Our Design Has Many Features:

- LARGER SEGMENTS: LESS WELDING & INSTALLATION TIME**
- NO RETAINING BARS: LESS WELDING & INSTALLATION TIME**
- STANDARD BUILT IN CROWN: BETTER BELT TRACKING ABILITY**
- MORE SURFACE CONTACT AREA BETWEEN BELT & PULLEY SURFACE**
YOU GET MORE OF WHAT YOU LAG FOR — TRACTION!
- NO CUTTING REQUIRED: LESS INSTALLATION TIME — NO SCRAP**
- EASY TO ORDER: SIMPLY ORDER BY PULLEY SIZE, DIAMETER FIRST THEN FACE WIDTH —**
NO FORMULAS OR SPECIAL FIGURING REQUIRED
- REBUILDS OLD PULLEYS: LARGE SEGMENTS AND HEAVY 1/8" THICK CROWNED STEEL BACK**
ACTUALLY REBUILDS OLD PULLEY FACE

DO IT YOURSELF DESIGN

REPLACEABLE RIM LAGGING CAN BE PUT ON IN YOUR OWN SHOP OR WHILE THE PULLEY IS ON THE CONVEYOR —
NO TIME DELAYS — LIMITS BACK UP PULLEY STOCK REQUIREMENTS

MORE ECONOMICAL: NOT ONLY IS OUR LAGGING QUICK TO INSTALL, IT USUALLY COSTS LESS!
PLUS IF YOU ORDER A PULLEY FROM US WITH LAGGING WE WILL NOT CHARGE ASSEMBLY LABOR

TO ORDER

Replaceable Rim Lagging comes in sets for each pulley. To order you only need to give the diameter first, then the face width, we will furnish the number of segments needed to lag your pulley.

Our standard rubber is a high grade of rubber diamond grooved giving excellent traction ability. We also supply plain non-grooved lagging and fire and oil resistant static conducting M.S.H.A. Rubber.

As a pulley manufacturer we can supply you with a drum or wing pulley assembly complete with replaceable rim lagging and shaft. Bearings can also be mounted if needed. This assembly can save you many field assembly hours which add up to real money savings.



“REPLACEABLE RIM LAGGING”[®] INSTALLATION

1. Clean pulley face of dirt and buildup
2. Place first rim segment on pulley. Hold in place with welders clamps each end. Tack in middle and both ends on outside of pulley rim. Tack 1 1/2 inches long every 6 inches across pulley face. Use 3 inch Tacks every 4 inches on large horse power drives.
3. Place second rim segment on pulley with approximately 1/4 inch gap between first rim segment. Tack weld same manner.
4. It may be necessary to pull the middle down with chain. Be sure each segment fits snug against pulley face (Prevents segment flexing).
5. Continue until pulley is lagged.

Alternate Method—In applications where fire or explosion is a danger the welding method should not be used. Because of the larger segments we offer a bolt-on style which can be bolted directly to the pulley. The grain industry is a common user of this bolt-on static conductive M.S.H.A. style of lagging.

RRL is the most effective substitute for hot vulcanizing. Proper attachment is essential to its performance. User must inspect all welds and plate fit prior to start up. Douglas Manufacturing Co., Inc. warrants all material and workmanship in this product for 60 days. We will replace or repair any product claim at our option. In no case will Douglas Manufacturing Co., Inc. be liable for downtime, production loss, damage and/or related labor costs associated with this or any product.

Price List

WEIGHT P.L.L.	NO. OF SEGMENTS	FACE WIDTH																						
		DIA	12	14	16	18	20	22	26	32	34	36	38	40	44	46	51	57	60	63	72	75		
1.05	2	4	115	115	115	115	115	115	115	115	120	125	130	140										
1.24	2	6	120	120	120	120	120	120	120	120	150	150	150	170										
1.47	2	8	130	130	130	130	150	170	170	200	200	200	200											
1.74	3	10	150	150	150	150	170	200	200	220	220	220	220	220	240	260	330	355	385	400	450	480		
2.09	3	12	150	150	150	150	170	200	220	220	220	260	280	300	320	330	350	375	400	425	500	540		
2.44	3	14	200	200	200	200	200	220	290	375	375	375	395	405	470	490	505	565	670	690	700	850		
2.80	4	16	200	200	220	220	220	275	305	375	375	395	405	405	470	565	565	600	700	750	790	900		
3.63	4	18	200	220	220	275	275	305	375	405	405	470	470	470	505	565	670	670	750	850	890	1000		
3.48	4	20	200	220	275	305	305	405	470	470	505	565	565	605	670	700	750	780	850	950	960	1080		
4.18	4	24	220	240	275	275	375	405	505	565	605	670	670	700	750	780	850	950	1035	1130	1170	1270		
5.23	4	30	305	305	375	405	470	500	605	670	700	750	780	850	950	980	1035	1130	1255	1380	1480	1610		
6.28	5	36	305	375	405	470	505	565	700	750	780	850	950	980	1035	1130	1255	1380	1480	1645	1700	1800		
7.33	5	42	405	470	470	565	605	700	780	950	1035	1130	1130	1160	1250	1380	1450	1675	1880	1985	2030	2200		
8.37	5	48	405	470	565	605	750	780	850	950	1035	1130	1250	1350	1460	1550	1675	1880	1985	2260	2300	2500		

This catalog and all contents copyright © Jan. 1993, Douglas Manufacturing Co., Inc., Pell City, AL 35125



REPLACEABLE RIM LAGGING

"REPLACEABLE RIM LAGGING®" INSTALLATION

There are (2) two fast, simple and effective ways of installing "REPLACEABLE RIM LAGGING."

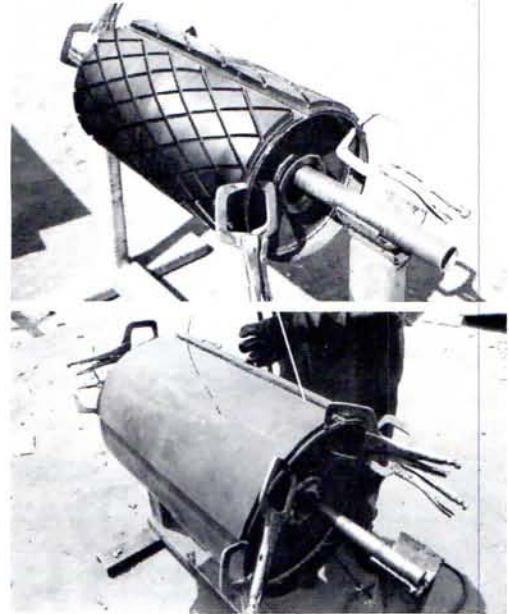
1. TACK WELD

1. Clean pulley face of dirt and buildup
2. Place first rim segment on pulley. Hold in place with welders clamps each end. Tack in middle and both ends on outside of pulley rim. Tack 1 inch long every 6 inches across pulley face.
3. Place second rim segment on pulley with approximately 1/4 inch gap between first rim segment. Tack weld same manner.
4. It may be necessary to pull the middle down with chain. Be sure each segment fits snug against pulley face (Prevents segment flexing).
5. Continue until pulley is lagged.

CAUTION: DO NOT WELD FULL LENGTH OR LONGER THAN 2" LONG WELD TACKS. THIS MAKES REPLACEMENT VERY DIFFICULT.

2. BOLT ON

1. Clean pulley surface of old rubber dirt and buildup.
2. Clamp first rim segment against pulley face. Hold in place with welders clamps at each end.
3. Clamp second rim segment against pulley face leaving 1/4" gap between the two segments.
4. It may be necessary to pull the middle down with chain. Be sure each segment fits snug against face (prevents segment flexing).
5. Drill at (4) corners of each segment thru pulley rim. Attach 3/8" elevator bolts depending on application severity. Drill and attach elevator bolts at pulley edge every 4" around the circumference.
6. Finish by attaching self tapping heat tempered #1 lagging screws every 4" across pulley face.



SELF TAPPING
LAGGING SCREWS

#1 - \$25.00 C

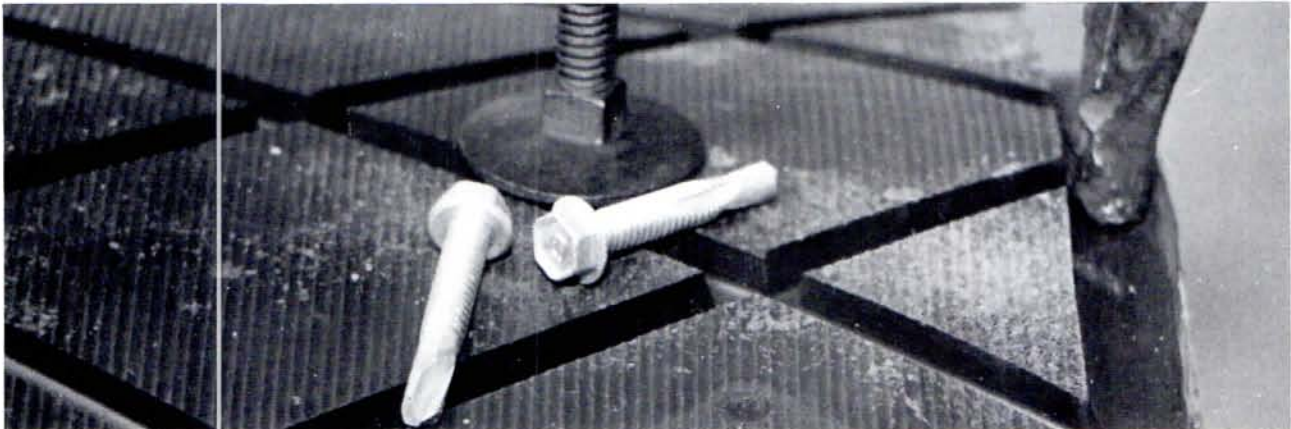
ELEVATOR
BOLTS

3/8 - \$55.00 C

LAG-SCREW
POWER GUN

\$395.00
includes attachment

RRL is the most effective substitute for hot vulcanizing. Proper attachment is essential to its performance. User must inspect all welds, bolts and plate fit prior to start up. Douglas Manufacturing Co., Inc. warrants all material and workmanship in this product for 60 days. We will replace or repair any product claim at our option. In no case will Douglas Manufacturing Co., Inc. be liable for downtime, production loss, damage and/or related labor costs associated with this or any product.

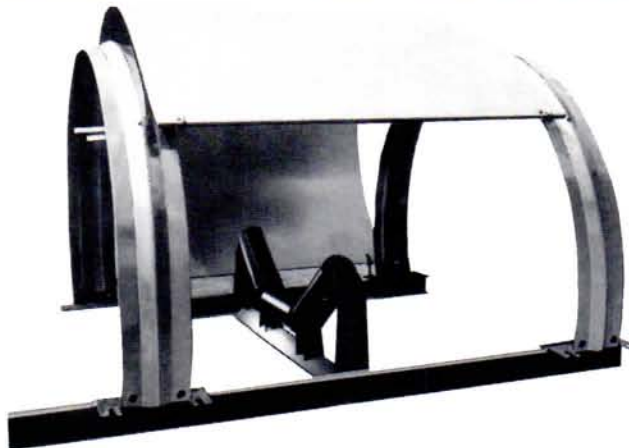


NOTE: If the BOLT ON method is chosen because of fire hazard or grain elevator safety requirements, we do have available static conducting and/or MSHA style rubber compounds. Please specify when required.

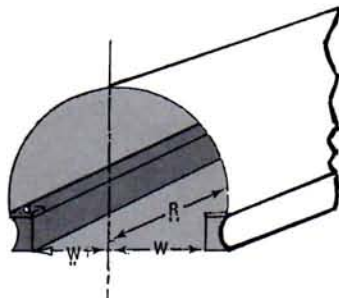
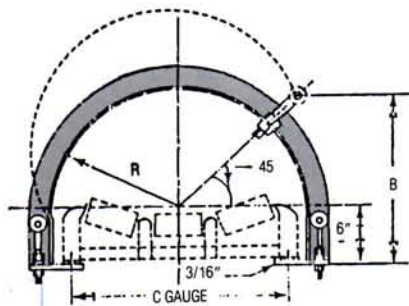
This catalog and all contents copyright © Jan. 1993, Douglas Manufacturing Co., Inc., Pell City, AL 35125



CONVEYOR COVERS

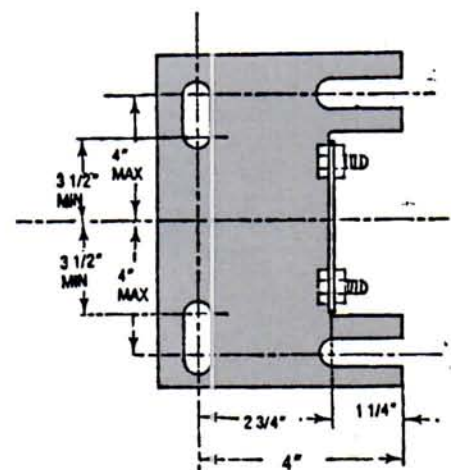
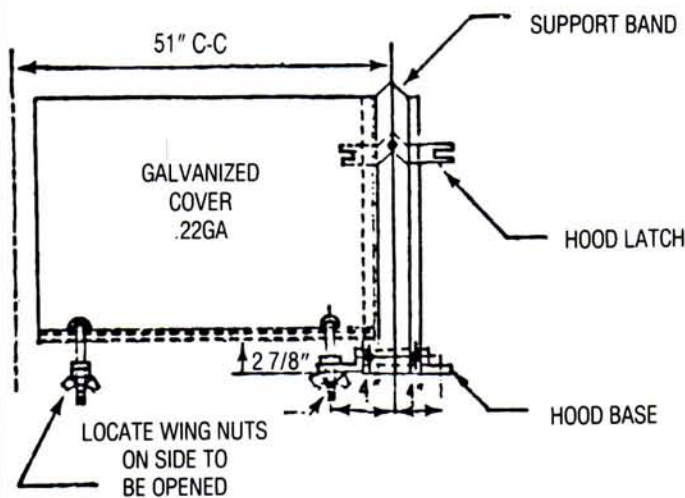


- Helps Protect Conveyed Material From Natural Elements
- Helps Protect Idlers & Belts
- Offers Increased Safety To Personnel
- Galvanized Smooth For Longer Life
All Sections 4' Long Hood Length.



Belt Widths	4' Section List Price	R	W	GA	Extra Band List Price
18	\$ 86	16 1/4	13 1/2	22	36
20	89	17 1/4	14 1/2	22	37
24	94	19 1/4	16 1/2	22	39
30	97	22 1/4	19 1/2	22	41
36	109	25 1/4	22 1/2	22	43
42	118	28 1/4	25 1/2	22	45
48	130	31 1/4	28 1/2	22	48
54	155	34 1/4	31 1/2	22	50

Price Includes (1) Support Band Per 4' Section
\$70.00 Crating Charge 100' And Under

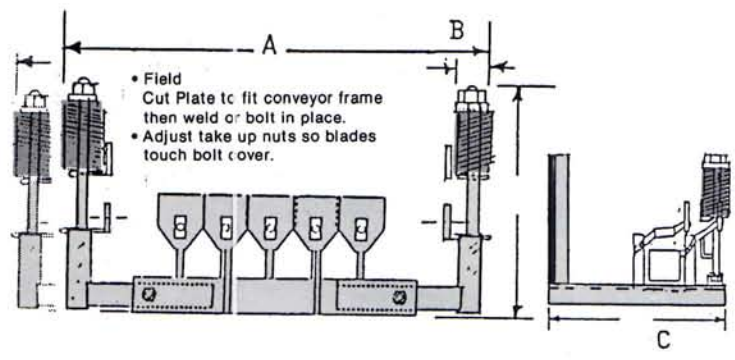


This catalog and all contents copyright © Jan. 1993, Douglas Manufacturing Co., Inc., Pell City, AL 35125



BELT CLEANING SYSTEMS

Engineered Products To Keep Your Clean Up Costs Down



ALL PURPOSE HEAVY DUTY SCRAPER

Belt Width	List Price	A*	B	C	D*
14	500	25"	2	10	15 1/2"
16	500	27"	2	10	15 1/2"
18	550	29"	2	10	15 1/2"
20	595	31"	2	10	15 1/2"
24	695	35"	2	10	15 1/2"
30	700	41"	2	10	15 1/2"
36	925	47"	2	10	15 1/2"
42	1150	53"	2	10	15 1/2"
48	1325	59"	2	10	15 1/2"
54	1500	65"	2	10	15 1/2"
60	1800	71"	2	10	15 1/2"
72	2300	83"	2	10	15 1/2"

* +6" Adj.

* +3" Adj.

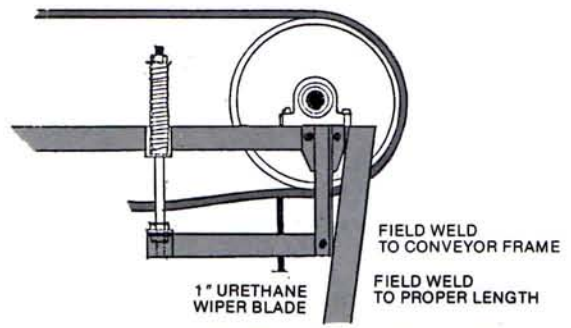
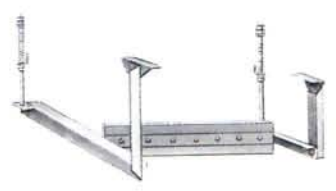
- Segmented Blades in either Stainless Steel or Urethane
- Blades Mounted on Torsion Blocks To Give "Spring Back" Effect. Saves Mechanical Fasteners.
- Adjustable Side To Side & Up & Down For Easy Field Installation To Various Frame Widths & Pulley Diameters.
- Up To 50% Savings On Replacement Blades

STANDARD DUTY Spring Loaded Belt Scraper

Belt Width	STANDARD DUTY Spring Loaded Single Scraper Blade
18"	365
20"	420
24"	450
30"	560
36"	675
42"	725
48"	795
54"	850
60"	900
72"	995

REPLACEMENT URETHANE BLADES X 1" THICK			
B/W	PRICE	B/W	PRICE
18"	66	42"	155
20"	74	48"	177
24"	88	54"	199
30"	110	60"	220
36"	133	72"	266

- Simple & Effective
- Easy To Install
- Lowest Cost
- Automatic Adjusting Spring
- 1" Urethane Blade For Long Life
- All Belt Widths Available
- Side To Side Adjusting Frame For Ease In Installation



TO ORDER

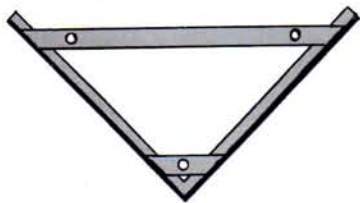
PLEASE SPECIFY:

- BELT WIDTH • TYPE AND STYLE CLEANER • CONVEYOR FRAME MOUNTING DIMENSIONS
- * Follow minimum safety instructions on inside back cover.

This catalog and all contents copyright © Jan. 1993, Douglas Manufacturing Co., Inc., Pell City, AL 35125

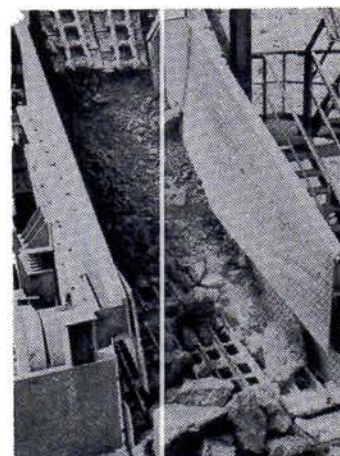
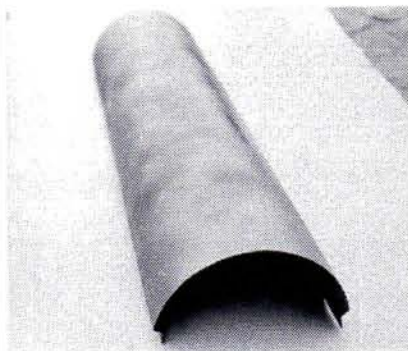
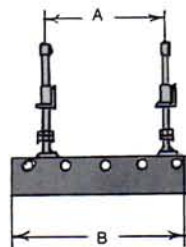
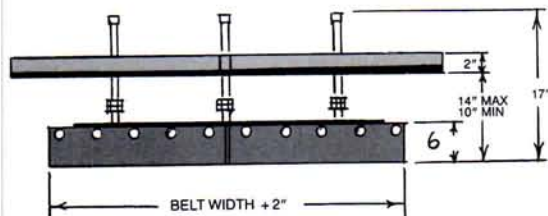


BELT PLOW



- To clean underside of belt preventing foreign materials from being trapped between belt and tail pulley, possibly cutting or damaging belt.
- When mounted on topside of belt, acts as a diverter, moving conveyed material to one side or both.

BELT WIDTH	WIPE WIDTH	A	B	LIST PRICE
12"	14"	4"	7"	330.00
16"	18"	6"	9"	345.00
18"	20"	7"	10"	350.00
20"	22"	8"	11"	365.00
24"	26"	10"	13"	380.00
30"	32"	10"	16"	410.00
36"	38"	13"	19"	445.00
42"	44"	16"	22"	475.00



SCREEN TUBE COVERS (VIBRATING SCREENS)

EXTRA HEAVY DUTY

Protect your eccentric shaft, shaft casing and bearings with this full length one piece steel backing plate with 3/4" thick 60 duro abrasion resistant rubber face "Screen Tube

Cover". This cover fits easily on top of the shaft casing and can be tack welded or clamped to the casing for simple and quick installation.

To order simply furnish the outside diameter dimension of the shaft casing and length of the area that needs covering. As our liner is on a full length steel cap plate, spot repair and rebuild can be easily accomplished. Removal is accomplished by grinding the tack welds or loosening your clamp.

LIST PRICES 3/4" THICK RUBBER	
Diameter	Price Per Foot of Length
8 5/8	96.00
10 3/4	102.00
12 3/4	108.00
14	115.00
16	122.00

Clamps Not Supplied



CONTINUOUS ELEVATOR BUCKETS

Elevators using this design are made in various types to handle bulk materials from light to heavy and fine to large lumps.

Buckets are spaced continuously and loaded by direct feeding. Spillage between buckets is reduced by their close spacings.

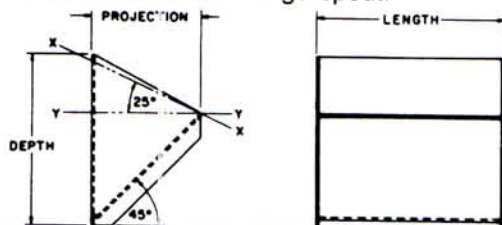
As the buckets discharge, the material flows over the preceding bucket, whose front and projecting sides form a chute to the discharge spout.



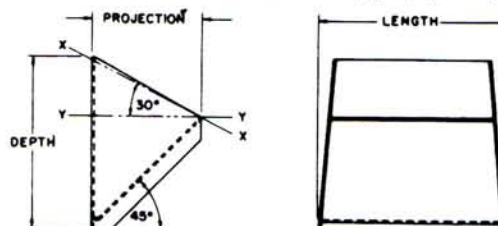
CONTINUOUS type (style #2)

CONTINUOUS type (style #4)

Style HF



Style HFO

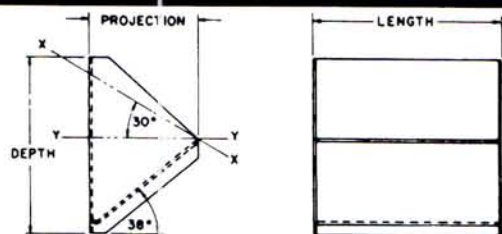


Bucket size, inches ■			List Price Weight, pounds				Capacity cubic feet ▲	
Length	Projection	Depth	12 gauge steel	10 gauge steel	3/16" steel	1/4" steel	Filled to line XX	Filled to line YY
8	5	7 3/4	8.82	11.20	15.30	--	.080	.052
			4.9	6.2	8.5	--		
10	5	7 3/4	10.30	13.15	18.00	--	.100	.065
			5.7	7.3	10.0	--		
10	6	9 1/4	13.00	16.40	22.70	--	.145	.098
			7.2	9.1	12.6	--		
10	7	11 1/8	16.40	20.90	28.90	37.80	.190	.130
			9.1	11.6	16.00	20.9		
12	6	9 1/4	15.00	18.80	26.00	--	.175	.115
			8.3	10.4	14.4	--		
12	7	11 1/8	18.60	23.80	32.80	43.10	.240	.155
			10.3	13.2	18.2	23.9		
12	8	11 1/8	20.40	25.80	36.10	46.85	.295	.205
			11.3	14.3	20.0	26.0		
14	7	11 1/8	20.70	26.70	36.80	48.10	.280	.184
			11.5	14.8	20.4	26.7		
14	8	11 1/8	22.70	28.80	40.40	50.60	.350	.240
			12.6	16.0	22.4	28.1		
16	8	11 1/8	25.10	31.90	44.50	58.00	.395	.275
			13.9	17.7	24.7	32.2		
16	12	17 1/8	--	54.60	75.50	99.10	.900	.635
			--	30.3	41.9	55.0		
18	10	15	--	47.20	65.00	85.90	.720	.485
			--	26.2	36.1	47.7		
20	12	17 1/8	--	63.20	88.40	116.30	1.150	.800
			--	35.1	49.1	64.6		
24	12	17 1/8	--	72.90	101.40	134.00	1.335	.960
			--	40.5	56.3	74.3		

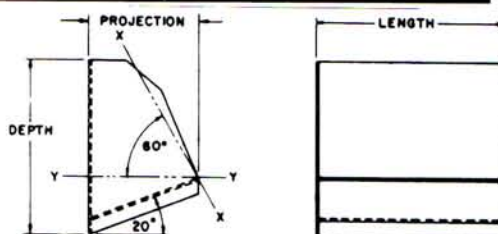
Bucket size, inches ■			Weight, pounds				Capacity cubic feet ▲	
Length	Projection	Depth	12 gauge steel	10 gauge steel	3/16" steel	1/4" steel	Filled to line XX	Filled to line YY
8	5	8 1/2	5.1	6.5	8.9	--	.089	.059
10	5	8 1/2	5.9	7.6	10.5	--	.112	.077
10	6	10	7.5	9.5	13.1	--	.162	.108
10	7	12 1/2	9.6	12.3	16.7	--	.227	.150
12	6	10	8.6	10.8	15.0	--	.193	.126
12	7	12 1/2	10.8	14.0	19.0	--	.275	.182
12	8	12 1/2	11.8	15.0	20.5	27.1	.320	.200
14	7	12 1/2	12.1	15.7	21.3	--	.333	.224
14	8	12 1/2	13.1	16.8	22.9	30.4	.386	.246
16	8	12 1/2	14.5	18.6	25.2	33.6	.425	.265
16	12	18 3/8	--	31.1	43.0	56.8	.962	.605
20	12	18 3/8	--	36.4	50.4	66.6	1.203	.755
24	12	18 3/8	--	41.7	57.8	76.4	1.444	.905

NOTE: ADD .90 PER HOLE PUNCH CHARGE

Style MF



Style LF



Bucket size, inches ■			Weight, pounds				Capacity cubic feet ▲	
Length	Projection	Depth	12 gauge steel	10 gauge steel	3/16" steel	1/4" steel	Filled to line XX	Filled to line YY
8	5	7 3/4	5.1	6.3	8.7	--	.070	.040
9	6	9 1/4	6.7	8.6	11.9	--	.118	.068
10	5	7 3/4	5.9	7.4	10.2	--	.090	.050
10	6	9 1/4	7.2	9.2	12.7	--	.130	.075
10	7	11 1/8	9.3	11.9	16.5	--	.180	.103
10	8	11 1/8	9.9	12.8	17.8	23.2	.235	.135
11	6	9 1/4	7.7	9.9	13.6	--	.145	.081
12	6	9 1/4	8.1	10.5	14.5	--	.155	.091
12	7	11 1/8	10.4	13.4	18.6	--	.218	.125
12	8	11 1/8	11.2	14.4	20.0	26.1	.275	.163
14	7	11 1/8	11.6	14.9	20.7	--	.253	.145
14	8	11 1/8	12.4	16.0	22.2	29.1	.325	.190
16	8	11 1/8	13.7	17.6	24.5	32.0	.375	.220
16	12	17 3/8	--	29.9	40.6	54.8	.852	.490
18	8	11 1/8	14.9	19.2	26.7	35.0	.420	.250
18	10	15	--	25.9	36.1	47.3	.662	.379
20	8	11 1/8	16.1	20.8	29.0	38.0	.470	.270
20	12	17 3/8	--	34.8	48.5	63.9	1.075	.320
24	10	11 1/8	--	27.4	38.2	50.0	.850	.812
24	12	17 3/8	--	39.8	55.4	73.1	1.295	.745

Bucket size, inches ■			Weight, pounds				Capacity cubic feet ▲	
Length	Projection	Depth	12 gauge steel	10 gauge steel	3/16" steel	1/4" steel	Filled to line XX	Filled to line YY
10	6	9 1/4	6.8	8.8	12.1	--	.168	.035
10	7	11 1/8	8.5	10.8	15.1	--	.242	.050
12	6	9 1/4	7.8	10.0	13.8	--	.201	.042
12	7	11 1/8	9.6	12.3	17.1	--	.302	.060
12	8	11 1/8	11.2	14.4	20.1	--	.347	.075
14	7	11 1/8	10.7	13.7	19.1	--	.345	.070
16	8	11 1/8	13.6	17.4	24.3	--	.463	.101
16	12	17 3/8	--	29.3	40.7	53.6	1.093	.229
18	10	15	--	25.4	35.0	46.5	.940	.183
20	8	11 1/8	15.9	20.5	28.5	--	.573	.126
20	12	17 3/8	--	33.9	47.1	62.0	1.365	.287
24	12	17 3/8	--	38.5	53.5	70.5	1.645	.346

This catalog and all contents copyright © Jan. 1993, Douglas Manufacturing Co., Inc., Pell City, AL 35125

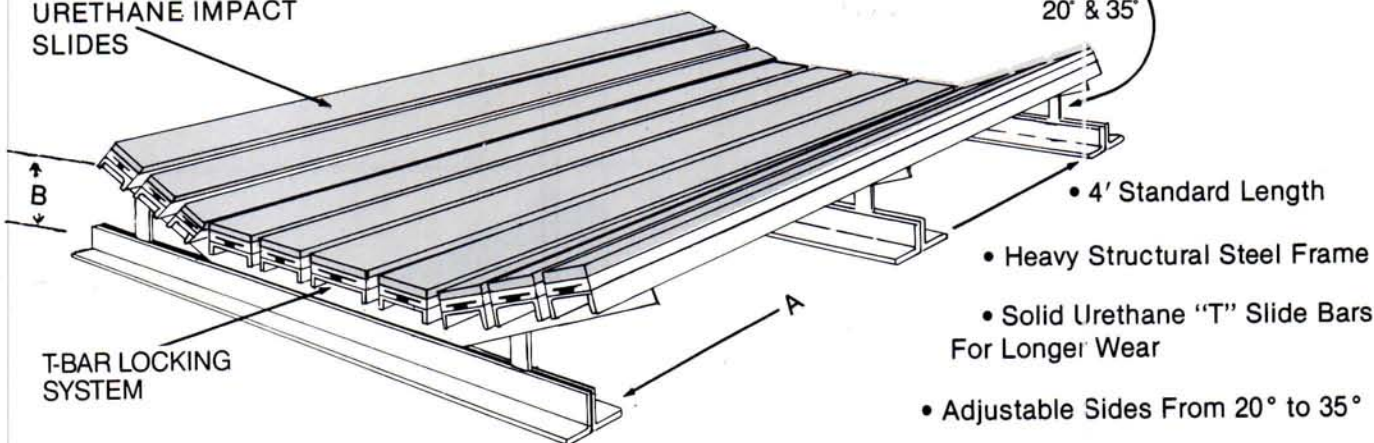


IMPACT BED ASSEMBLIES

3" x 4" x 48" DUAL DUROMETER SOLID URETHANE IMPACT SLIDES

48" STANDARD LENGTHS 60" AVAILABLE

ADJUSTS FROM THE FLAT POSITION TO 20° & 35°



BENEFITS

Discounts Apply

Belt Width	List Price	A	B
24	\$2687	48"	8 ³ / ₈
30	2725	48"	8 ³ / ₈
36	3100	48"	9
42	3838	48"	9
48	4454	48"	10
54	5066	48"	10
60	5200	48"	10

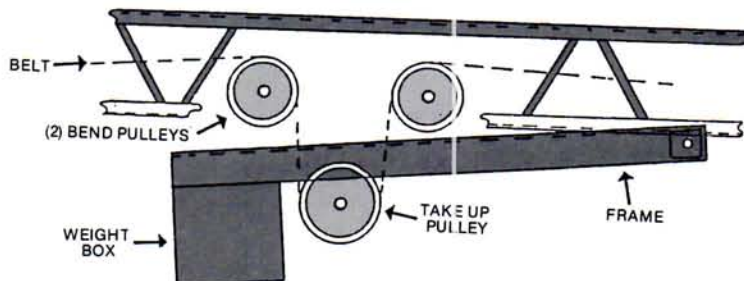
- Absorbs shock loads, eliminates idler failure cost
- Near perfect seal between belt and skirt boards, less dust and clean up
- No moving parts to wear out and replace results in less maintenance and down time
- Easy to install
- No lubrication. No bent shafts or worn rollers to replace
- Reduced belt damage. The bed supports full length of the belt. No seized rollers to cut belt

GRAVITY TAKE UP ASSEMBLIES

PRE-ENGINEERED

"SCISSOR PIVOT" GRAVITY TAKE UP ASSEMBLIES

Note: Safety chain both sides to be supplied by customer based on take up weight. Set at 45° max pivot angle.



"SCISSORS PIVOT" TAKE UP ASSEMBLIES

Belt Width	List Price
18	2650
24	3540
30	4400
36	5300
42	6175
48	7100

Assembly Consists of:

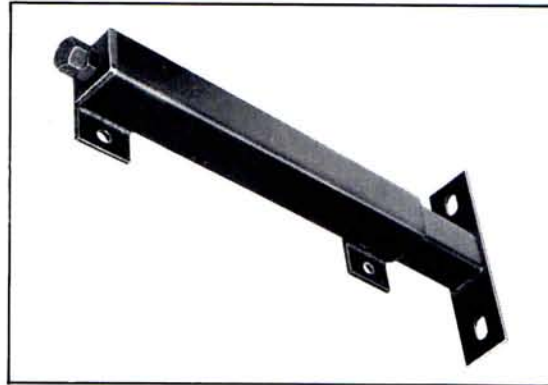
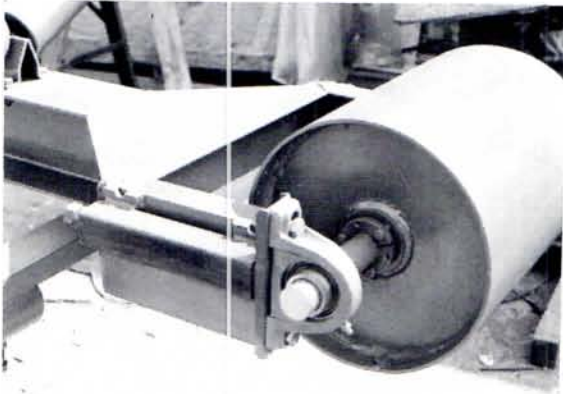
- 2 - Drum Bend Pulleys, Shaft and Ball Bearing Pillow Block
- 1 - Wing Take Up Pulley, with Shaft and Ball Bearing Pillow Block
- 1 - Lever Arm Frame, Pivot Shaft and Weight Box (less weights)



SLIDE TUBE TAKE UPS

Economical, Fast Installation

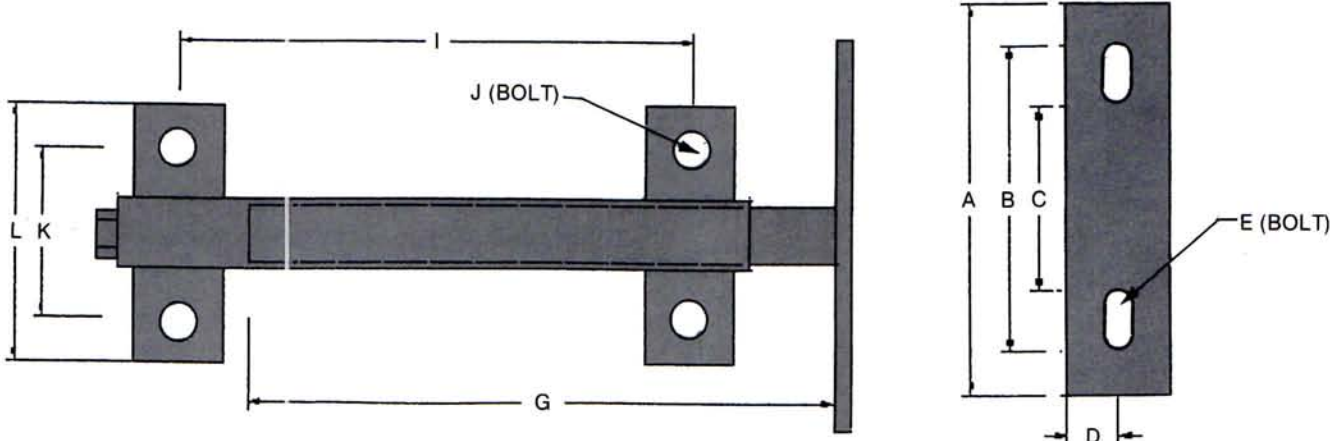
Side mounted, bolts or welds to conveyor frame. Eliminates need for additional take-up frame support.



MODEL	TAKE-UP	LIST PRICE	BORE	A	B	C	D	E	G	I	J	K	L
10	3	60	1/2" - 1"	5 1/4	4 1/2	1 3/4	3/4	3/8	4	2 3/4	1/2	3	4
	6	65		5 1/4	4 1/2	1 3/4	3/4	3/8	7	5 3/4	1/2	3	4
	9	70		5 1/4	4 1/2	1 3/4	3/4	3/8	10	8 3/4	1/2	3	4
20	3	73	1 3/16" - 2"	8 1/4	6"	3 3/4	1 1/2	1/2	4	2 1/4	3/8	3 1/16"	5 1/2"
	6	78		8 1/4	6"	3 3/4	1 1/2	1/2	7	5 1/4	3/8	3 1/16"	5 1/2"
	9	83		8 1/4	6"	3 3/4	1 1/2	1/2	10	8 1/4	5/8	3 1/16"	5 1/2"
	12	88		8 1/4	6"	3 3/4	1 1/2	1/2	13	11 1/4	5/8	3 1/16"	5 1/2"
	18	93		8 1/4	6"	3 3/4	1 1/2	1/2	19	17 1/4	5/8	3 1/16"	5 1/2"
30	6	90	2 3/16" - 3"	12	9 1/2	6"	1 1/2	3/4	8	6 1/4	3/4	4 7/16"	6 3/4"
	9	95		12	9 1/2	6"	1 1/2	3/4	11	9 1/4	3/4	4 7/16"	6 3/4"
	12	100		12	9 1/2	6"	1 1/2	3/4	14	12 1/4	3/4	4 7/16"	6 3/4"
	18	115		12	9 1/2	6"	1 1/2	3/4	20	18 1/4	3/4	4 7/16"	6 3/4"
	24	125		12	9 1/2	6"	1 1/2	3/4	26	24 1/4	3/4	4 7/16"	6 3/4"
35	12	315	3 7/16"	14 1/4	13 3/4	6 3/4	1 1/2	7/8	14	11 3/4	3/4	5 1/8"	8 1/4"
	18	322		14 1/4	13 3/4	6 3/4	1 1/2	7/8	20	17 3/4	3/4	5 1/8"	8 1/4"
	24	340		14 1/4	13 3/4	6 3/4	1 1/2	7/8	26	23 3/4	3/4	5 1/8"	8 1/4"

Above 3 7/16" Consult Factory

BEARING SHAFT SIZE IS FOR BALL BEARING PILLOW BLOCKS.
CONTACT FACTORY IF FRAMES ARE USED WITH ROLLER BEARING PILLOW BLOCKS



This catalog and all contents copyright © Jan. 1993, Douglas Manufacturing Co., Inc., Pell City, AL 35125



CONVEYOR BELT TAKE UPS

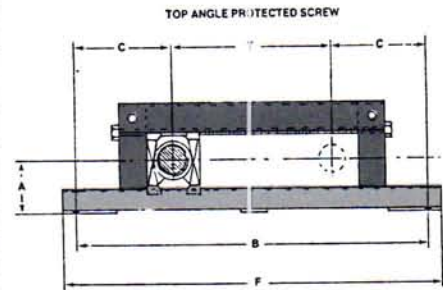
**CENTER PULL AVAILABLE
UPON REQUEST**



TOP ANGLE PROTECTED SCREW TAKE UPS For Heavy Duty Applications, Furnished With Bearings

DIMENSIONS

Shaft Size Inches	Complete Assembly No.	DIMENSIONS IN INCHES						Frame Capacity In Lbs.	Bolts Req'd		Take-up Block Wt. Lbs.	Complete Takeup Wt. Lbs.	List Price w/ Brg.
		A	B	C	F	T Travel	No.		Size				
1-15/16 2	TA10	-12	26 1/2		28 1/2	12	10,300	1	3/4	13.0	45	308	
		-18	32 1/2		34 1/2	18	8,000					51	
		-24	38 1/2	7 1/4	40 1/2	24	9,300					58	
		-30	44 1/2		46 1/2	30	7,000					65	
		-36	50 1/2		52 1/2	36	5,000			75	410		
2-3/16 2-1/4	TA20	-12	27 1/2		29 1/2	12	12,200	1	3/4	17.0	51	395	
		-18	33 1/2		35 1/2	18	9,600					54	
		-24	39 1/2	7 1/4	41 1/2	24	10,900					58	
		-30	45 1/2		47 1/2	30	8,500					63	
		-36	51 1/2		53 1/2	36	6,000			63	470		
2-3/8 2-7/16 2-1/2	TA30	-12	28 1/2		30 1/2	12	13,000	1	3/4	21.5	59	412	
		-18	34 1/2		36 1/2	18	10,300					66	
		-24	40 1/2	8 1/4	42 1/2	24	10,400					75	
		-30	46 1/2		48 1/2	30	8,860					80	
		-36	52 1/2		54 1/2	36	7,300			90	500		
2-11/16 2-15/16	TA40	-12	30 1/2		32 1/2	12	17,100	1	3/4	31.0	86	510	
		-18	36 1/2		38 1/2	18	13,700					95	
		-24	42 1/2	9 1/4	44 1/2	24	15,800					113	
		-30	48 1/2		50 1/2	30	13,600					120	
		-36	54 1/2		56 1/2	36	11,400			130	600		
3-3/16 3-7/16 3-1/2	TA50	-12	32		34 1/4	12	23,100	1	3/4	46.0	100	715	
		-18	38		40 1/4	18	18,800					120	
		-24	44	10	46 1/4	24	25,800					135	
		-30	50		52 1/4	30	19,300					155	
		-36	56		58 1/4	36	14,000			175	800		
3-11/16 3-15/16 4	TA60	-12	36		38 1/2	12	38,800	1	3/4	82.0	234	1260	
		-18	42		44 1/4	18	32,300					245	
		-24	48	12	50 1/2	24	37,400					256	
		-30	54		56 1/2	30	31,800					267	
		-36	60		62 1/2	36	26,000			280	1370		



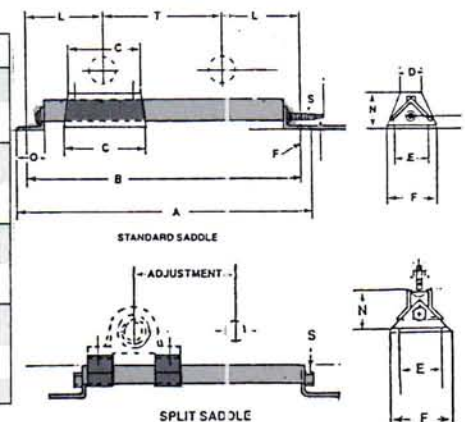
Note: Dimensions subject to change. Certified dimensions of ordered material furnished on request.



TMS MD SCREW TAKE UP

MEDIUM DUTY Bearings not included. Uses standard 2 bolt ball bearing pillow block

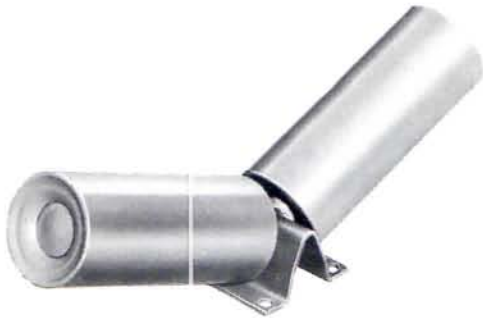
MODEL NUMBER	TRAVEL	A	B	C	D	E	F	L	N	WT.	S	FRAME LIST PRICE
TMS-10 BORE 1/2"-1"	6	19 1/2	18					6		12		58.00
	9	22	20 1/2	9	2 1/2	2 1/2	3 1/2	5 1/4	3 3/8	13	3/4	64.00
	12	25 1/2	24					5 1/4		20		78.00
	18	33 1/2	32					7		24		83.00
TMS-20 BORE 1 1/8"-2"	12	25 1/2	23 1/2	9	2 1/2	2 1/2	3 1/2	7 1/4	3 3/8	20		86.00
	18	33 1/2	32					7 1/4		25	3/4	92.00
	24	46	44 1/2							30		126.00
	30	56 1/2	53 1/2							35		150.00
TMS-25 BORE 2 1/8"-2 1/2"	12	25 1/2	23 1/2	9	2 1/2	2 1/2	3 1/2	9 1/4	3 3/8	20		105.00
	18	33 1/2	32					9 1/4		35	3/4	118.00
	24	46	44 1/2					9 1/4		35		140.00
	30	56 1/2	53					9 1/4		36		160.00
TMS-30 2 1/8"-2 1/2"	12			9	2 1/2				3 3/8			202.00
	18										3/4	225.00
	24											250.00
	30					2 1/2	3 1/2					285.00
	36											320.00



This catalog and all contents copyright © Jan. 1993, Douglas Manufacturing Co., Inc., Pell City, AL 35125



2 ROLL TROUGHING IDLERS

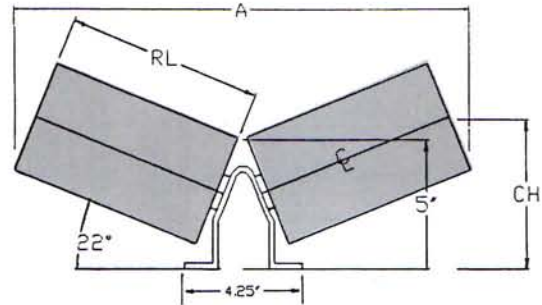


4" LONG LIFE HEAVY DUTY IDLER

- 10 ga. roller
- Sealed ball bearings ea. end
- 3/4" dia. thru shaft

- Ideal and economical way to move medium and medium heavy materials.
- Especially ideal for temporary plants and mining sites where PORTABILITY is important

- Economical up to 50% savings over conventional conveyor systems
- Compact - space saving design
- Modular design quick installation & take down using 20' or 40' modular sections
- Less support structure required



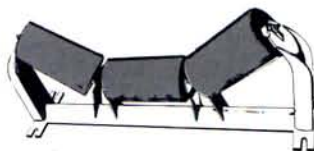
4" Dia. x 22° TROUGH IDLER DIMENSIONS				
B.W.	LIST PRICE	R.L.	C.H.	WT.
12"	100.00	6 15/16	5 1/4	13
14"	103.00	7 15/16	5 3/4	14
16"	105.00	9 1/16	6 1/4	15
18"	107.00	9 15/16	6 5/8	16
20"	109.00	10 15/16	7 1/4	17
24"	114.00	13	8	18
30"	119.00	15 15/16	8 1/8	19

BASE PLATE
 3/8" x 4 1/2" x 5" wide - 4 Hole Base for 3/8" Bolts on 3 1/2" W x 4" Long Spacing

CAPACITY IN TPH (100# cu/ft. - 10° Surcharge Angle)

B.W.	SPEED		
	250	300	350
12"	40	60	75
14"	70	95	100
16"	105	125	145
18"	135	160	190
20"	165	190	220
24"	250	300	350
30"	P.O.A.	P.O.A.	P.O.A.

URETHANE IDLER ROLL COVERS

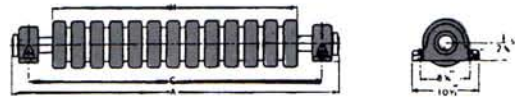


- 1/4" Thick Urethane
- Rebuilds Old Rolls
- Extend Roll Life Up To 8 Times
- Easy To Install, Cut To length or Order Cut, Tap On With Rubber Mallet.

Roll Dia.	List Price Per Inch
4	1.95
5	2.20
6	3.85

DOUGLAS LIVE SHAFT RUBBER DISC IDLERS

Flat belt rubber cushion idlers live shaft



List Price*	7"	Belt width, inches	Idler weight, pounds†	INCHES		
				A	C	M
575	600	24	104	37	33	26 1/2
610	640	30	118	43	39	32 1/2
645	675	36	134	49	45	38 1/2
700	730	42	148	55	51	44 1/2
710	740	48	165	61	57	50 1/2
745	775	54	179	67	63	56 1/2
805	835	60	195	73	69	62 1/2



UHMW (SOLID) ROLL TROUGHING IDLERS

CEMA B DIMENSIONS FOR CONVEYOR SPEEDS NOT EXCEEDING 300 FPM

MADE FROM ULTRA HIGH MOLECULAR WEIGHT MATERIAL—OUTPERFORMS STANDARD IDLERS

For wet, dusty, dirty applications where bearing seals fail in waste treatment, fertilizer, salt and other abrasive and caustic materials handling applications.

No bearings or seals to wear out or change • Corrosion resistant, sanitary, easy to clean and resists material buildup. Frames can be epoxy painted or hot dipped galvanized.

B/W	Model Number 4" DIAMETER			Price Troughing Idlers	Price Return Rolls With Brackets	Wt. 4"	Wt. 4" Returns W/Bkts	Wt. 5"	Wt. " Returns W/Bkts
	20"	35"	45"						
14	UH60420E-14	UH60435E-14	UH60445E-14	182.00	124.00	27	16	28	19
16	UH60420E-16	UH60435E-16	UH60445E-16	183.00	126.00	28	17	29	21
18	UH60420E-18	UH60435E-18	UH60445E-18	185.00	128.00	30	18	34	23
20	UH60420E-20	UH60435E-20	UH60445E-20	187.00	131.00	31	19	37	24
24	UH60420E-24	UH60435E-24	UH60445E-24	193.00	135.00	35	21	41	27
30	UH60420E-30	UH60435E-30	UH60445E-30	204.00	144.00	43	24	51	32
36	UH60420E-36	UH60435E-36	UH60445E-36	214.00	151.00	49	27	57	36



*Add for Galvanized or Epoxy Paint Frame (List x 1.20)

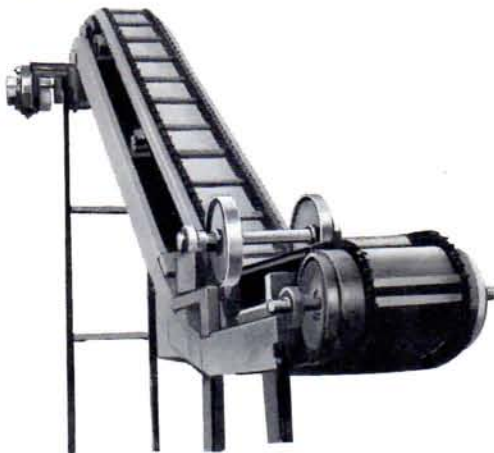
*Add for 5" ϕ (List x 1.15)

"True-Turn" DEFLECTION WHEELS (SINGLE WHEEL)

Machined turn up wheels for use with sidewall cleated belts
Optional: internal, pillow block or flange bearings.

Shafting available

Extension arm available



Necessary information for sizing and pricing

Company Name _____

Your Name _____

City _____ State _____

Fax # _____ Phone _____

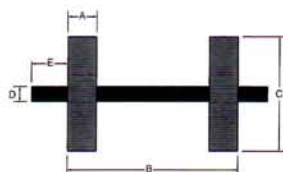
A. Face width _____

B. Belt width _____

C. Wheel diameter _____

D. Shaft diameter _____

E. Shaft extension _____



PRICE LIST							
Dia.	Bore	Face Width					
		2	3	4	5	6	8
6.5"	1 ¹ / ₁₆ "	370	375	380	385	390	395
	2 ¹ / ₁₆ "	390	395	400	405	410	415
	2 ⁷ / ₁₆ "	410	415	420	425	430	440
8.5"	1 ¹ / ₁₆ "	372	377	382	387	392	397
	2 ¹ / ₁₆ "	392	397	402	407	412	417
	2 ⁷ / ₁₆ "	410	417	422	427	432	437
10.5"	1 ¹ / ₁₆ "	405	411	417	423	429	435
	2 ¹ / ₁₆ "	415	422	427	433	439	455
	2 ⁷ / ₁₆ "	435	442	447	453	459	465
	2 ⁹ / ₁₆ "	540	547	552	558	564	570
12.5"	2 ¹ / ₁₆ "	493	498	503	508	513	518
	2 ⁷ / ₁₆ "	513	518	523	528	533	538
	2 ⁹ / ₁₆ "	608	613	628	633	638	643
	3 ¹ / ₁₆ "	733	738	743	748	753	758
14"	2 ⁷ / ₁₆ "	548	554	560	566	572	578
	2 ⁹ / ₁₆ "	653	659	665	671	677	683
	3 ¹ / ₁₆ "	778	784	790	796	802	808
	3 ³ / ₁₆ "	1028	1034	1040	1046	1052	1058
16"	2 ⁷ / ₁₆ "	573	579	585	591	597	603
	2 ⁹ / ₁₆ "	678	684	690	696	702	708
	3 ¹ / ₁₆ "	803	809	815	821	827	833
	3 ³ / ₁₆ "	1053	1059	1065	1071	1077	1083
18"	2 ⁷ / ₁₆ "	770	777	784	791	798	805
	3 ¹ / ₁₆ "	895	902	909	916	923	930
	3 ³ / ₁₆ "	1145	1151	1158	1165	1172	1179
	*4 ¹ / ₁₆ "	2019	2025	2031	2037	2043	2049
20"	2 ¹ / ₁₆ "	830	839	848	857	866	875
	3 ¹ / ₁₆ "	955	964	973	982	991	1000
	3 ³ / ₁₆ "	1205	1214	1223	1232	1241	1250
	*4 ¹ / ₁₆ "	2079	2088	2097	2106	2115	2124
24"	2 ¹ / ₁₆ "	930	941	952	963	974	985
	3 ¹ / ₁₆ "	1055	1066	1077	1088	1099	1110
	3 ³ / ₁₆ "	1305	1316	1327	1338	1349	1360
	*4 ¹ / ₁₆ "	2179	2190	2201	2212	2223	2234
30"	2 ¹ / ₁₆ "	1260	1272	1284	1296	1308	1320
	3 ¹ / ₁₆ "	1385	1397	1409	1421	1433	1445
	3 ³ / ₁₆ "	1635	1647	1659	1671	1683	1695
	*4 ¹ / ₁₆ "	2509	2521	2533	2545	2557	2569
40"	3 ¹ / ₁₆ "	1750	1764	1778	1792	1806	1820
	3 ³ / ₁₆ "	2000	2014	2028	2042	2056	2060
	*4 ¹ / ₁₆ "	2875	2889	2903	2917	2931	2945
	*4 ³ / ₁₆ "	3445	3459	3473	3487	3501	3515

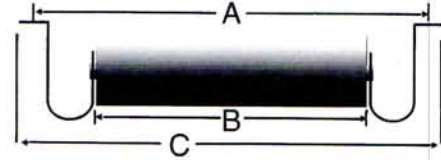
*Roller Bearing flanged housing



BEATER ROLLS

- "J" Brackets
- Drop in Rolls
- 5" - 6" or 7" Diameters
- Precision Ground Sealed for Life Ball Bearings

MODEL NUMBER	BELT WIDTH	A	B	C	LIST PRICE
05 BRR 18	18	27	21	28 3/4	135
05 BRR 20	20	29	23	30 3/4	140
05 BRR 24	24	33	27	34 3/4	150
05 BRR 30	30	39	33	40 3/4	160
05 BRR 36	36	45	39	46 3/4	170
05 BRR 42	42	51	45	52 3/4	180
05 BRR 48	48	57	51	58 3/4	190
05 BRR 54	54	63	57 5/16	64 3/4	235

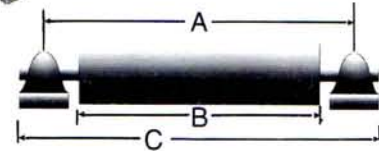


- For 6" Ø (Finished) x 1.10 To List Price
- For 7" Ø (Finished) x 1.30 To List Price
- Price Includes Drop Brackets

SQUIRREL CAGE HD ROLLS

- Cleated Belts
- Material Build UP Problems
- Up To And Including 72" Belts
- 5" - 6" and 7" Diameters

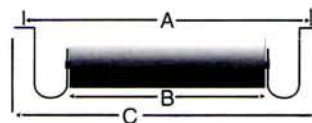
MODEL NUMBER	BELT WIDTH	A	B	C	LIST PRICE
05-SCHD-24	24	33	27	34 3/4	225
05-SCHD-30	30	39	32	40 3/4	235
05-SCHD-36	36	45	39	46 3/4	245
05-SCHD-42	42	51	45	52 3/4	285
05-SCHD-48	48	57	51	58 3/4	310
05-SCHD-54	54	63	57 5/16	64 3/4	380
05-SCHD-60	60	69	63 5/16	70 3/4	430
05-SCHD-72	72	81	75 5/16	82 3/4	530



- For 6" Ø (Finished) x 1.10 To List Price
- For 7" Ø (Finished) x 1.30 To List Price
- Price Includes 1" Shaft and Pillow Blocks

SQUIRREL CAGE MD ROLLS

MODEL NUMBER	BELT WIDTH	A	B	C	LIST PRICE
05-SCMD-14	14	23	17	24 3/4	125
05-SCMD-16	16	25	19	26 3/4	127
05-SCMD-18	18	27	21	28 3/4	130
05-SCMD-20	20	29	23	30 3/4	136
05-SCMD-24	24	33	27	34 3/4	146
05-SCMD-30	30	51	33	40 3/4	154



- Up To And Including 30" Belts
- Drop In Rolls
- Sealed For Life Precision Ball Bearings
- Price Includes Drop Brackets



TERMS AND CONDITIONS

SHIPMENTS:

All shipments will be shipped F.O.B. Pell City, AL, freight collect. All claims for merchandise lost or damaged in transit, after delivery to the freight carrier, must be handled by the purchaser with the carrier.

PRICES:

All prices are subject to change without notice. Prices are exclusive of all taxes.

CANCELLATION:

Orders can be cancelled only prior to the beginning of work or costs incurred. Cancellation charges will apply.

RETURNED GOODS:

No goods can be returned without approval and use of our assigned R.G.A. number.

WARRANTY:

Douglas Manufacturing Co., Inc. guarantees all equipment to be of good workmanship, to be made of good materials and to do the work for which intended, when set up and operated according to instructions. All products must be assembled according to instructions provided and all safety guards must be installed prior to startup. Douglas Manufacturing Co., Inc. shall not be responsible for more than the cost of the defective part. Douglas Manufacturing Co., Inc. agrees to replace free of charge any part which proves defective within 90 days from the date of purchase, to the original purchaser only. The company is to be notified in writing within 30 days from date of failure and the defective part returned prepaid if requested. This warranty covers only such parts that are manufactured by Douglas Manufacturing Co., Inc. and does not extend to component parts used in equipment.

No allowance will be made for any expense incurred in repairing or replacing defective products.

ORDER ACCEPTANCE:

Orders are accepted only upon the condition that you assent to the terms and conditions contained herein. Terms and conditions in purchaser's order which may differ from, alter or add to the condition of sale specified herein shall not be considered as accepted by or binding upon us unless we agree in writing to any such terms or conditions.

WEIGHT:

Weights shown in our catalog are approximate or average and are for estimating only.

SAFETY & LIABILITY:

Douglas Manufacturing Co., Inc. hereby disclaims any liability for injuries which may result from the use of our products contrary to our instructions. We specifically exclude any and all warranties of **Merchantability and of Fitness** for a particular purpose. We will not be liable in any event for incidental or consequential damages.

There is no liability expressed or implied on the structural soundness or design of equipment not supplied by Douglas Manufacturing Co., Inc. or equipment that is inconsistent with CEMA standards.

SERIOUS INJURY MAY RESULT:

Douglas Manufacturing Co., Inc. insists that all OSHA and owner safety rules be adhered to during installation and operation and recommends that they be supplemented by the American National Standards Committee "Safety Standards for Conveyors and Related Equipment," ANSI B20.1a-1985, and LOCKOUT/TAGOUT PROCEDURES, ANSI spec. z244.1. Do not operate, adjust or install equipment on moving conveyor.

WARNING:

If service/inspection is necessary, in your opinion, while belt is in operation, ONLY trained personnel who are aware of the hazards and follow specified safety precautions and procedures should be allowed to perform the work. **Remember, Safety Is Everyone's Responsibility.**



NOTES

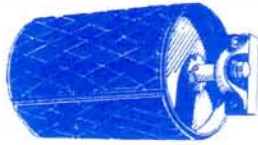


NOTES

A large, empty rectangular box with a black border, occupying most of the page. It is intended for writing notes.

PULLEYS

Standard Heavy Duty, Mine Duty, Mill Duty. Bushings available in QD, TL, and BIKON, sizes from 4" to 48" diameter and 75" length. All pulleys meet or exceed MPTDA standards.



DRUM PULLEYS

Manufactured with rolled in crown, or straight face. Full depth submerged arc welded, hubs welded inside and out. Specially engineered pulleys available.



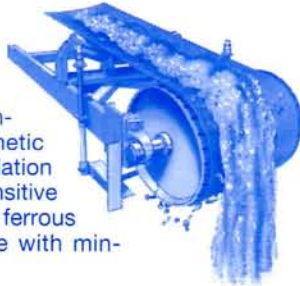
WING PULLEYS

Jig Built with full length welds for uniform wing spacing and concentricity. Crown or straight face. Full round face bar. Specially engineered designs built to specifications.

Douglas also manufactures self cleaning spiral wing pulleys.

PERMANENT MAGNETIC PULLEYS

Protects expensive equipment and helps remove metal from conveyed material. Permanent magnetic strength guaranteed during installation life. No electric hook ups, not sensitive to wet conditions. Removes most ferrous metals and operates trouble free with minimum maintenance.



VULCANIZED PULLEY LAGGING

Users report less slippage and longer, trouble free pulley service when hot vulcanized, truck tire tough, 1/4", 3/8" or 1/2" thick, rubber is applied to a drum or a wing pulley. Lagging is furnished smooth or with grove patterns, depending on the application.



REPLACEABLE RIM LAGGING

Lagging is furnished in sets for each pulley size and can be quickly applied by tack welding, frequently without removing the pulley. When fire or explosion suppression is needed,

lagging section may be bolted to the pulley. This is a fast money saving alternative to pulley replacement.

REBUILD OLD PULLEYS

New life, better performance and great savings can be realized when Replaceable Rim Lagging is used on old pulleys. This fast, economical method of repair gives added strength and better traction without the high cost of pulley replacement.

SHAFTING

Douglas C1018 or C1045 cold rolled steel shafting can be ordered with or without key ways. When specifications indicate, ends can be journaled. Other grades of steel, including stainless, are available.

IDLERS

UHMW Troughing Idlers: Made from ultra high molecular weight materials. For severe applications when dust, salt, waste handling and other abrasive and caustic materials are handled. These solid roll idlers can out perform standard idlers. There are no bearings to wear out, or seals to fail, grease or change. These idlers are corrosion resistant, sanitary, easy to clean and resist material build up. Frames can be epoxy painted or hot dipped galvanized.



Smooth galvanized finish ensures long life and improves conveyor appearance.

CONVEYOR COVERS

For Belt widths from 18" to 72". Furnished in four foot sections. Protects conveyed material from rain, snow and other contaminants. Protects idlers, conveyor belts and offers increased personnel safety.

BEATER ROLLS

Substitute for return idlers. Vibration will loosen stones and other debris preventing material build up, prolonging belt life.



SQUIRREL CAGE RETURN IDLERS

Protects cleats on belts; helps keep belt clean, prolonging belt life.



ALL PURPOSE HEAVY DUTY BELT SCRAPER

Increase belt life and reduce clean up costs with Douglas manufactured all purpose Heavy Duty Scrapers with segmented blades made of stainless steel or urethane. Easy to install and adjust to various frame widths and pulley diameters. Economical Replacement blades available.



2 ROLL TROUGHING IDLER

Lighter in weight, compact for portability, but built heavier than CEMA-B standards, sealed ball bearings on each end with a 3/4 diameter through shaft for medium and medium heavy materials for belt widths 12" to 30".



The products shown represent the most used conveyor equipment. Other products manufactured by Douglas include:

*Crossbelt Permanent Magnetic Separators
Suspended Permanent Conveyor Magnets
Urethane Idler Roll Covers
Live Shaft Rubber Disc Idlers
Impact Idlers and Bed Assemblies*

*Belt Plows
Gravity Takeup Assemblies
Vibrating Screen Tube Covers
Beater Rolls and
Squirrel Cage Rolls*

If you have any questions about any product, please call a Douglas Manufacturing Sales Representative. (205) 884-1200



DOUGLAS MANUFACTURING CO., INC.
Manufacturer of Conveyor Equipment

300 INDUSTRIAL PARK DRIVE • PELL CITY, ALABAMA 35125

PHONE 205-884-1200 • FAX 205-884-1206