

CEMA 300-1999
Revision of
ANSI/CEMA 300-1988
Approved June 30, 1988

**CEMA STANDARD
NO. 300**

**SCREW CONVEYOR
DIMENSIONAL STANDARDS**



CONVEYOR EQUIPMENT MANUFACTURERS ASSOCIATION

FOREWORD

This publication, CEMA Standard No. 300 "*Screw Conveyor Dimensional Standards*", provides recommended dimensional standards for major screw conveyor components. All Dimensions and Tolerances are based on Carbon Steel Fabrication.

These recommended standards are issued in conjunction with CEMA Standard No. 350 "*Screw Conveyors*".

"*Screw Conveyors*" is a comprehensive manual of engineering and application practice for screw conveyors.

Both publications are also American National Standards.

SUMMARY OF CHANGES

In this 1999 edition: All drawings have been redrawn to provide greater clarity and ease of interpretation; The need for Safety Labeling has been emphasized in the "Safety Notice" below; Trough tolerances were changed from $\pm 1/32$ " to $\pm 1/16$ "; The Notes on Lug Ends were modified to delete the words "on all sizes"; Hex head bolts replaced countersunk bolts in 300-013 and 300-014; In 300-033, Note 1 has been modified to allow the manufacturer the option of having the Flush End Discharge the same dimension as U Trough End Plates.

SAFETY NOTICE

The Conveyor Equipment Manufacturers Association has developed Industry Standard Safety Labels for use on the conveying equipment of its almost 100 member companies.

The purpose of the labels is to identify common and uncommon hazards, conditions, and unsafe practices which can injure, or cause the death of, the unwary or inattentive person who is working at or around conveying equipment.

The labels are available for sale to member companies and non-member companies.

A full description of the labels, their purpose, and 16 pages of guidelines on where to place the labels on typical equipment, has been published in CEMA's "*Safety Label Brochure*". The Brochure is available for purchase by members and non-members of the Association.

PLEASE NOTE: Should any of the safety labels supplied by the equipment manufacturer become unreadable for any reason, the equipment USER is then responsible for replacement and location of these safety labels.

Replacement labels and placement guidelines can be obtained by contacting your equipment supplier or CEMA.

Conveyor Equipment Manufacturers Association

6724 Lone Oak Blvd.

Naples, Florida 34109

Ph: 941-514-3441

Fax: 941-514-3470

Web Site: <http://www.cemanet.org>

CEMA Standard No. 300 - Copyright 1999
Conveyor Equipment Manufacturers Association

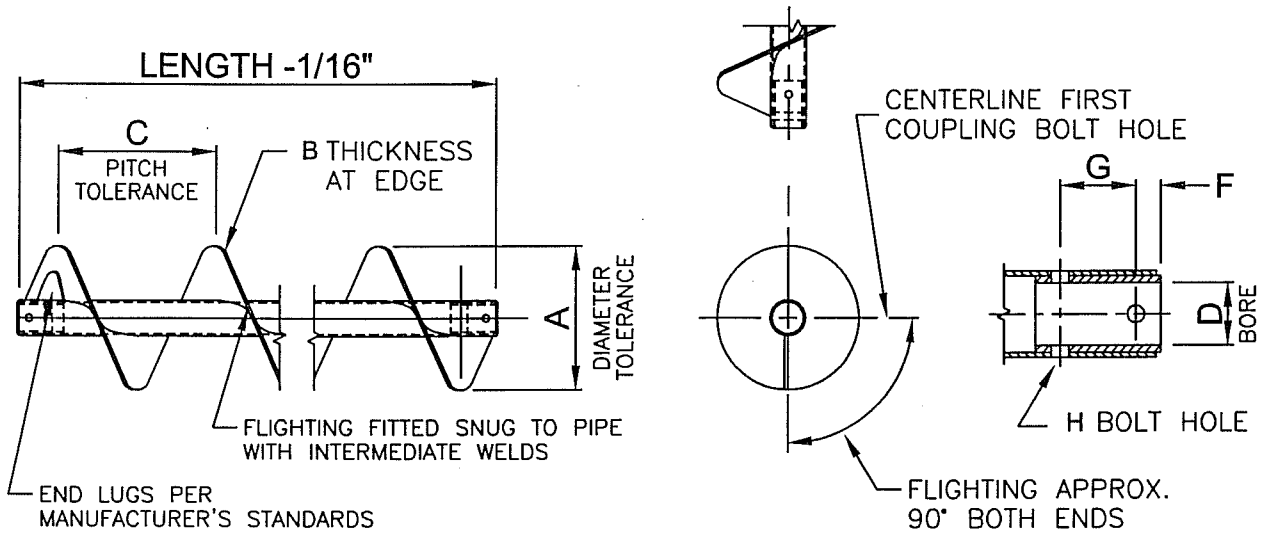
Printed in the U.S.A.

Prepared By

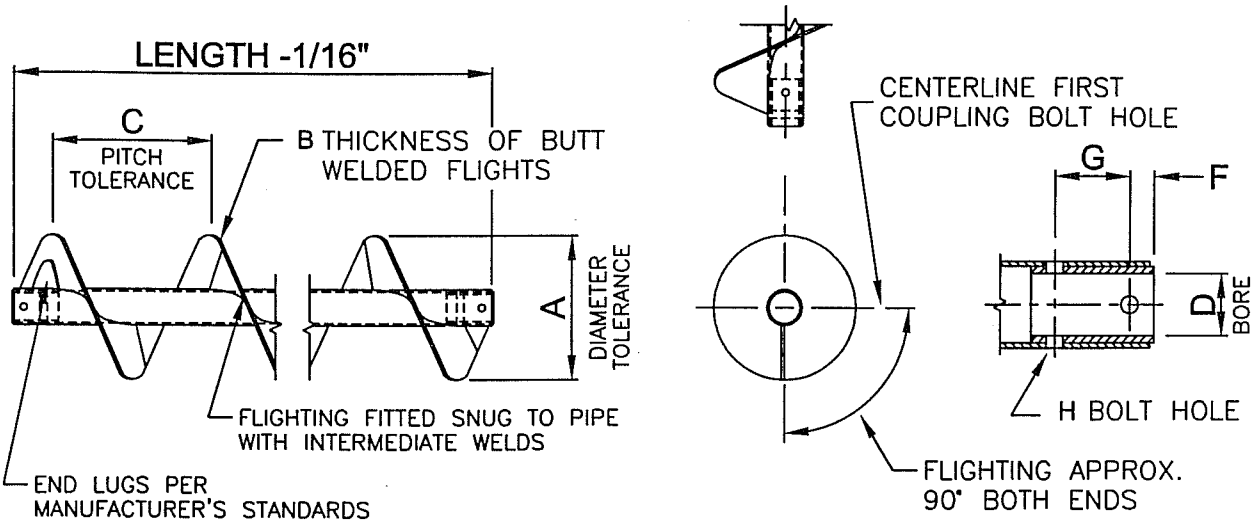
The Screw Conveyor Section of CEMA

Section Members

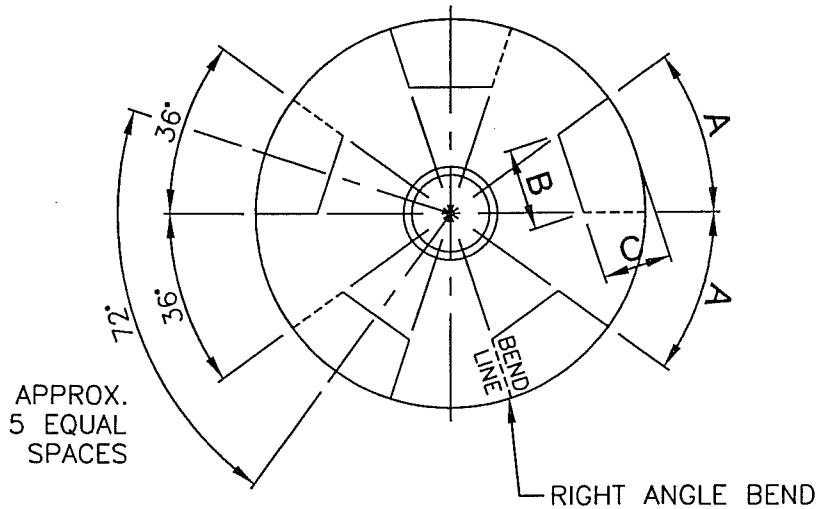
Continental Screw Conveyor Division, IPS Group, Inc.
Drives, Inc.
Falk Corporation
FMC Corporation, Conveyor Equipment Division
Goodman Conveyor Company
Industrial Screw Conveyors, Inc.
KWS Manufacturing Company, Inc.
Martin Sprocket & Gear, Inc.
SCC Industries
Summerlot Engineered Products
Thomas Conveyor Company
Jervis B. Webb Company of Georgia, MHE Division



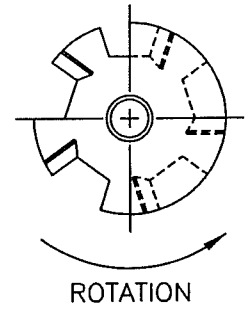
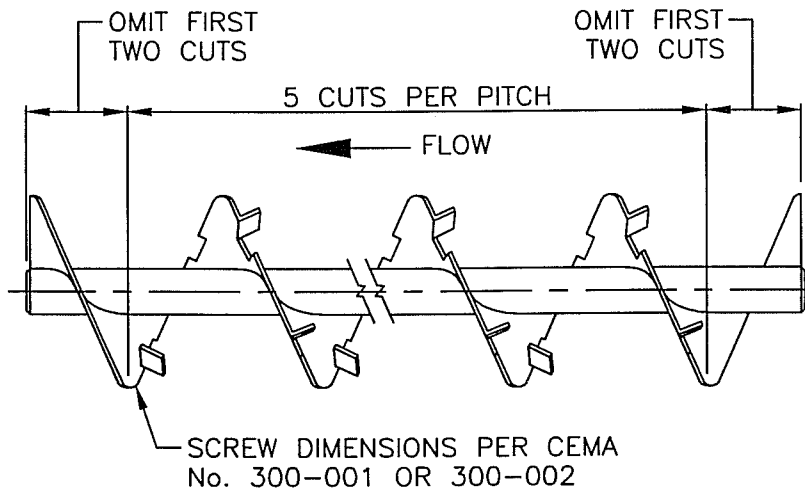
LISTED SCREW DIA. AND PITCH	CPLG. DIA.	SIZE DESIGN- ATION	PIPE SIZE SCH. 40 INCHES	LENGTH FEET AND INCHES	A		B		C		D		F	G	H
					DIAMETER TOLERANCE		THICK- NESS INNER EDGE	THICK- NESS OUTER EDGE	PITCH TOLERANCE		BUSHING BORE INSIDE DIA.				
					PLUS	MINUS			PLUS	MINUS	MIN.	MAX.	SPACING 1ST BOLT HOLE	CENTERS 2ND BOLT HOLE	NOM. BOLT HOLE SIZE
INCHES					INCHES										
6	1 1/2	6H304	2	9'-10"	1/16	3/16	1/8	1/16	1/2	1/4	1.505	1.516	7/8	3	17/32
	1 1/2	6H308	2	9'-10"	1/16	3/16	1/4	1/8	3/4	1/4	1.505	1.516	7/8	3	17/32
	1 1/2	6H312	2	9'-10"	1/16	3/16	3/8	3/16	3/4	1/4	1.505	1.516	7/8	3	17/32
9	1 1/2	9H306	2	9'-10"	1/16	3/16	3/16	3/32	3/4	1/4	1.505	1.516	7/8	3	17/32
	1 1/2	9H312	2	9'-10"	1/16	3/16	3/8	3/16	3/4	1/4	1.505	1.516	7/8	3	17/32
	2	9H406	2 1/2	9'-10"	1/16	3/16	3/16	3/32	3/4	1/4	2.005	2.016	7/8	3	21/32
	2	9H412	2 1/2	9'-10"	1/16	1/4	3/8	3/16	3/4	1/4	2.005	2.016	7/8	3	21/32
12	2	9H414	2 1/2	9'-10"	1/16	1/4	7/16	7/32	3/4	1/4	2.005	2.016	7/8	3	21/32
	2	12H408	2 1/2	11'-10"	1/8	5/16	1/4	1/8	1	1/4	2.005	2.016	7/8	3	21/32
	2	12H412	2 1/2	11'-10"	1/8	5/16	3/8	3/16	1	1/4	2.005	2.016	7/8	3	21/32
	2 7/16	12H508	3	11'-9"	1/8	5/16	1/4	1/8	1	1/4	2.443	2.458	15/16	3	21/32
	2 7/16	12H512	3	11'-9"	1/8	5/16	3/8	3/16	1	1/4	2.443	2.458	15/16	3	21/32
14	3	12H614	3 1/2	11'-9"	1/8	3/8	7/16	7/32	1	1/4	3.005	3.025	1	3	25/32
	2 7/16	14H508	3	11'-9"	1/8	5/16	1/4	1/8	1	1/4	2.443	2.458	15/16	3	21/32
	3	14H614	3 1/2	11'-9"	1/8	3/8	7/16	7/32	1	1/4	3.005	3.025	1	3	25/32
16	3	16H610	3 1/2	11'-9"	1/8	3/8	5/16	5/32	1 1/2	1/4	3.005	3.025	1	3	25/32
	3	16H614	3 1/2	11'-9"	1/8	3/8	7/16	7/32	1 1/2	1/4	3.005	3.025	1	3	25/32



LISTED SCREW DIA. AND PITCH	CPLG. DIA.	SIZE DESIGN- ATION	PIPE SIZE SCH. 40 INCHES	LENGTH FEET AND INCHES	A		B	C		D		F	G	H
					DIAMETER TOLERANCE		FLIGHT THICK- NESS	PITCH TOLERANCE		BUSHING BORE INSIDE DIA.		SPACING 1ST BOLT HOLE	CENTERS 2ND BOLT HOLE	NOM. BOLT HOLE SIZE
					PLUS	MINUS		PLUS	MINUS	MIN.	MAX.			
INCHES					INCHES									
6	1 1/2	6S309	2	9'-10"	1/16	3/16	10 GA	3/8	1/4	1.505	1.516	7/8	3	17/32
	1 1/2	6S312	2	9'-10"	1/16	3/16	3/16	3/8	1/4	1.505	1.516	7/8	3	17/32
9	1 1/2	9S312	2	9'-10"	1/16	3/16	3/16	1/2	1/4	1.505	1.516	7/8	3	17/32
	2	9S412	2 1/2	9'-10"	1/16	3/16	3/16	1/2	1/4	2.005	2.016	7/8	3	21/32
12	2	9S416	2 1/2	9'-10"	1/16	1/4	1/4	1/2	1/4	2.005	2.016	7/8	3	21/32
	2	12S412	2 1/2	11'-10"	1/8	5/16	3/16	3/4	1/4	2.005	2.016	7/8	3	21/32
	2 7/16	12S512	3	11'-9"	1/8	5/16	3/16	3/4	1/4	2.443	2.458	15/16	3	21/32
	2 7/16	12S516	3	11'-9"	1/8	5/16	1/4	3/4	1/4	2.443	2.458	15/16	3	21/32
14	3	12S616	3 1/2	11'-9"	1/8	5/16	1/4	3/4	1/4	3.005	3.025	1	3	25/32
	3	12S624	3 1/2	11'-9"	1/8	3/8	3/8	3/4	1/4	3.005	3.025	1	3	25/32
	2 7/16	14S512	3	11'-9"	1/8	5/16	3/16	3/4	1/4	2.443	2.458	15/16	3	21/32
16	3	14S616	3 1/2	11'-9"	1/8	5/16	1/4	3/4	1/4	3.005	3.025	1	3	25/32
	3	14S624	3 1/2	11'-9"	1/8	3/8	3/8	3/4	1/4	3.005	3.025	1	3	25/32
	3	16S612	3 1/2	11'-9"	1/8	3/8	3/16	3/4	1/4	3.005	3.025	1	3	25/32
18	3	16S616	3 1/2	11'-9"	1/8	3/8	1/4	3/4	1/4	3.005	3.025	1	3	25/32
	3	16S624	3 1/2	11'-9"	1/8	3/8	3/8	3/4	1/4	3.005	3.025	1	3	25/32
	3	16S632	3 1/2	11'-9"	1/8	1/2	1/2	3/4	1/4	3.005	3.025	1	3	25/32
	3 7/16	18S716	4	11'-8"	3/16	3/8	1/4	3/4	1/2	3.443	3.467	1 1/2	4	29/32
	3 7/16	18S724	4	11'-8"	3/16	3/8	3/8	3/4	1/2	3.443	3.467	1 1/2	4	29/32
20	3 7/16	18S732	4	11'-8"	3/16	1/2	1/2	3/4	1/2	3.443	3.467	1 1/2	4	29/32
	3	20S616	3 1/2	11'-9"	3/16	3/8	1/4	7/8	1/2	3.005	3.025	1	3	25/32
	3	20S624	3 1/2	11'-9"	3/16	3/8	3/8	7/8	1/2	3.005	3.025	1	3	25/32
	3 7/16	20S716	4	11'-8"	3/16	3/8	1/4	7/8	1/2	3.443	3.467	1 1/2	4	29/32
	3 7/16	20S724	4	11'-8"	3/16	3/8	3/8	7/8	1/2	3.443	3.467	1 1/2	4	29/32
24	3 7/16	20S732	4	11'-8"	3/16	1/2	1/2	7/8	1/2	3.443	3.467	1 1/2	4	29/32
	3 7/16	24S716	4	11'-8"	3/16	3/8	1/4	7/8	1/2	3.443	3.467	1 1/2	4	29/32
	3 7/16	24S724	4	11'-8"	3/16	3/8	3/8	7/8	1/2	3.443	3.467	1 1/2	4	29/32
3 7/16	24S732	4	11'-8"	3/16	1/2	1/2	7/8	1/2	3.443	3.467	1 1/2	4	29/32	

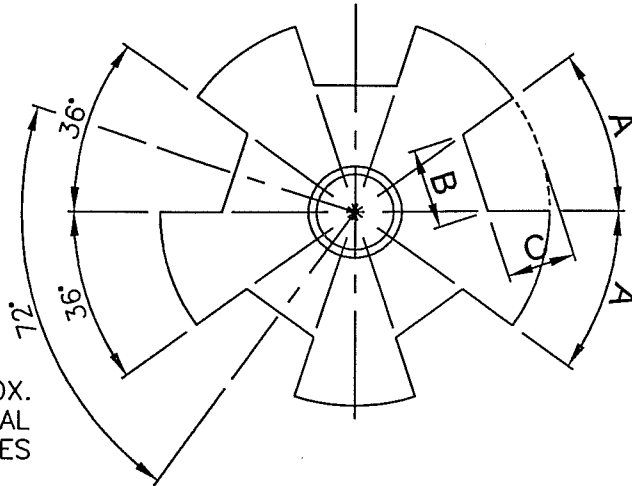


DEPTH OF CUT "C" IS ONE HALF THE FLIGHT WIDTH FOR NORMAL MAXIMUM PIPE SIZE. LENGTHS "A" & "B" ARE CALCULATED FROM THE DEVELOPED O.D. FOR A STANDARD PITCH.

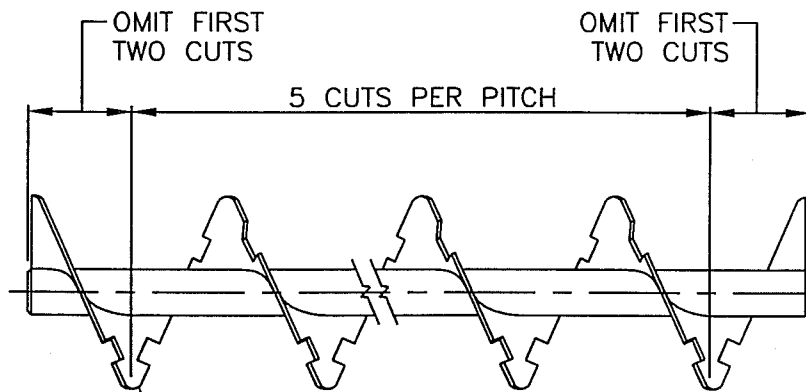


SCREW DIA. AND PITCH	A	B	C
6	2	1 1/2	7/8
9	3	2 1/8	1 1/2
12	4	2 3/4	2
14	4 5/8	3 1/8	2 1/2
16	5 1/4	3 1/2	3
18	6	3 7/8	3 3/8
20	6 5/8	4 1/4	3 7/8
24	7 7/8	4 7/8	4 7/8

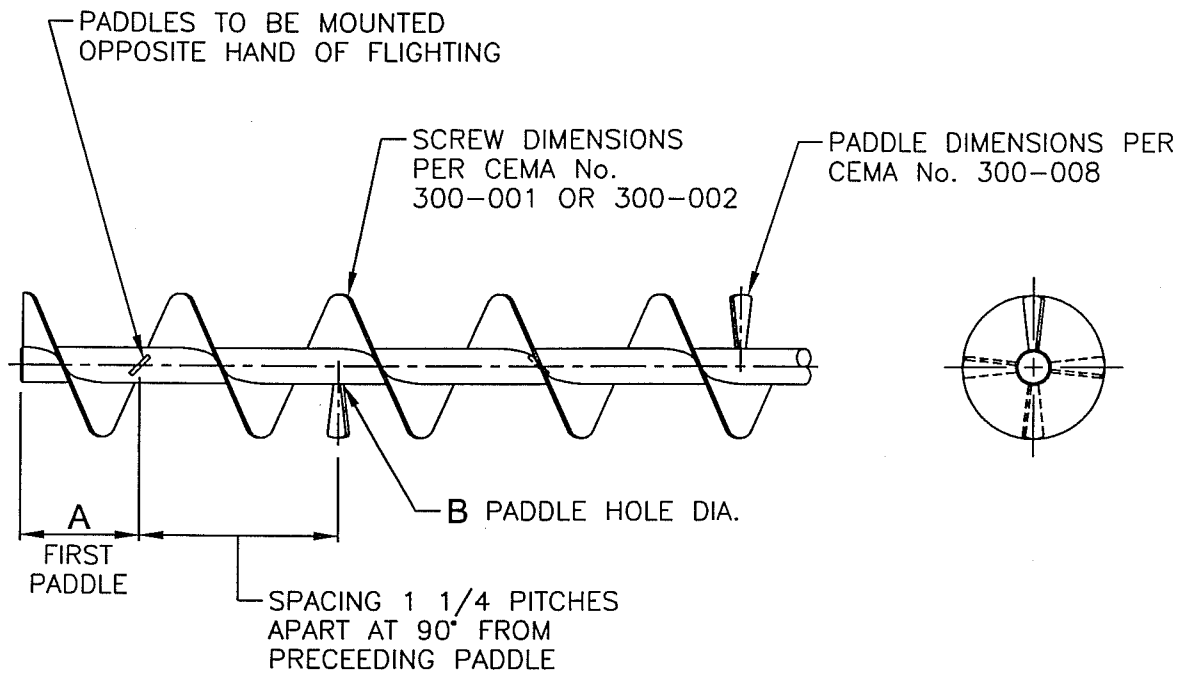
APPROX.
5 EQUAL
SPACES



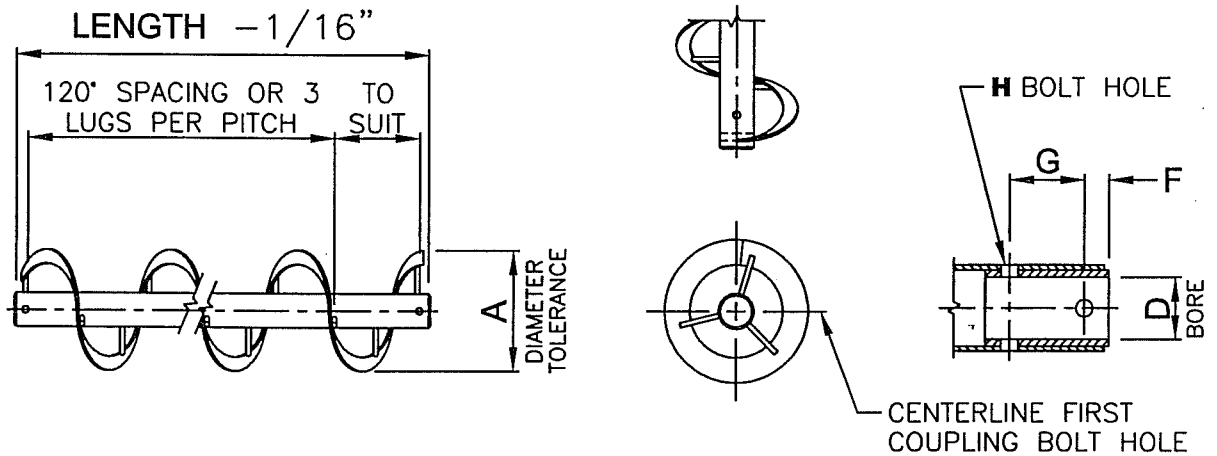
DEPTH OF CUT "C" IS ONE HALF THE FLIGHT WIDTH FOR NORMAL MAXIMUM PIPE SIZE. LENGTHS "A" & "B" ARE CALCULATED FROM THE DEVELOPED O.D. FOR A STANDARD PITCH.



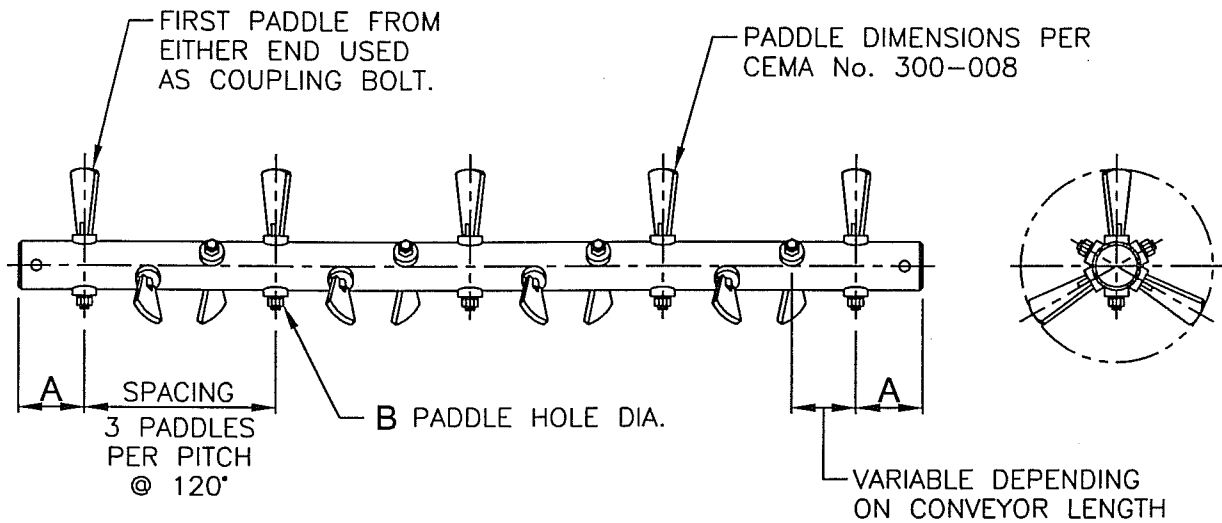
SCREW DIA. AND PITCH	A	B	C
6	2	1 1/2	7/8
9	3	2 1/8	1 1/2
12	4	2 3/4	2
14	4 5/8	3 1/8	2 1/2
16	5 1/4	3 1/2	3
18	6	3 7/8	3 3/8
20	6 5/8	4 1/4	3 7/8
24	7 7/8	4 7/8	4 7/8



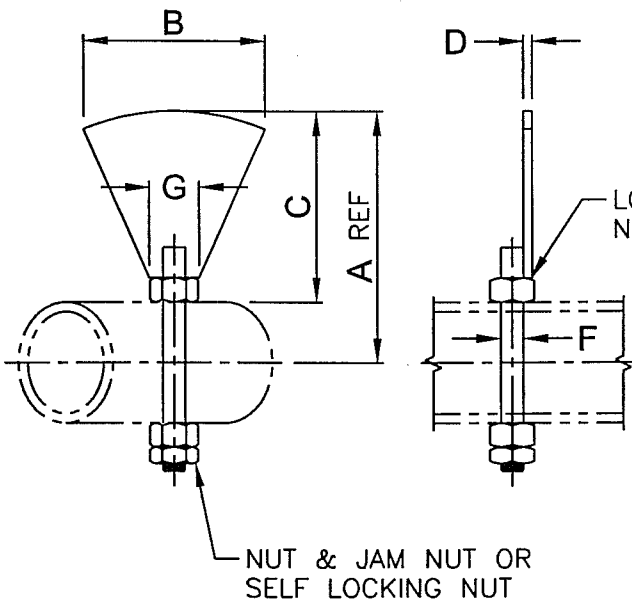
SCREW DIAMETER & PITCH	PIPE SIZE SCH. 40	A	B NOMINAL
6	2	7 1/4	17/32
9	2	7 1/4	17/32
	2 1/2		21/32
12	2 1/2	7 1/4	21/32
	3		21/32
	3 1/2		25/32
14	3	7 1/4	21/32
	3 1/2		25/32
16	3 1/2	7 1/4	25/32
18	3 1/2	7 1/4	25/32
20	3 1/2	7 1/4	25/32
24	4	9 1/4	29/32



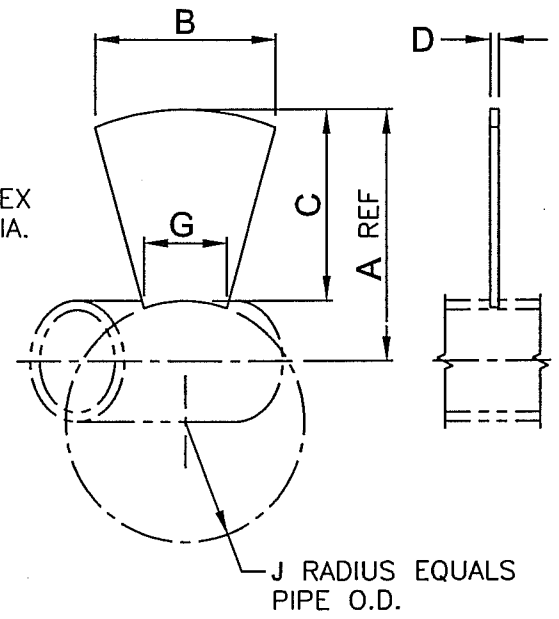
LISTED SCREW DIA. AND PITCH	CPLG. DIA.	SIZE DESIGN- ATION	PIPE SIZE SCH. 40 INCHES	LENGTH FEET AND INCHES	A		B		D		F	G	H
					DIAMETER TOLERANCE		FLIGHT SIZE		BUSHING BORE INSIDE DIA.				
					PLUS	MINUS	THICK.	WIDTH	MIN.	MAX.	SPACING 1ST BOLT HOLE	CENTERS 2ND BOLT HOLE	NOM. BOLT HOLE SIZE
INCHES		INCHES											
6	1 1/2	6R312	2	9'-10"	1/16	3/16	3/16	1	1.505	1.516	7/8	3	17/32
9	1 1/2	9R316	2	9'-10"	1/16	3/16	1/4	1 1/2	1.505	1.516	7/8	3	17/32
12	2	12R416	2 1/2	11'-10"	1/8	5/16	1/4	2	2.005	2.016	7/8	3	21/32
	2	12R424	2 1/2	11'-10"	1/8	3/8	3/8	2 1/2	2.005	2.016	7/8	3	21/32
14	2 7/16	12R524	3	11'-9"	1/8	3/8	3/8	2 1/2	2.443	2.458	15/16	3	21/32
	3	14R624	3 1/2	11'-9"	1/8	3/8	3/8	2 1/2	2.443	2.458	15/16	3	21/32
16	3	16R616	3 1/2	11'-9"	1/8	3/8	1/4	2 1/2	3.005	3.025	1	3	25/32
	3	16R624	3 1/2	11'-9"	1/8	3/8	3/8	2 1/2	3.005	3.025	1	3	25/32
18	3	18R624	3 1/2	11'-9"	3/16	3/8	3/8	3	3.005	3.025	1	3	25/32
20	3 7/16	20R724	4	11'-8"	3/16	3/8	3/8	3	3.443	3.467	1 1/2	4	29/32
24	3 7/16	24R724	4	11'-8"	3/16	3/8	3/8	3	3.443	3.467	1 1/2	4	29/32



SCREW DIAMETER & PITCH	PIPE SIZE SCH. 40	A	B NOMINAL
6	2	3 7/8	17/32
9	2	3 7/8	17/32
	2 1/2		21/32
12	2 1/2	3 7/8	21/32
	3	3 15/16	21/32
	3 1/2	4	25/32
14	3	3 15/16	21/32
	3 1/2	4	25/32
16	3 1/2	4	25/32
18	3 1/2	4	25/32
20	3 1/2	4	25/32
24	4	5 1/2	29/32

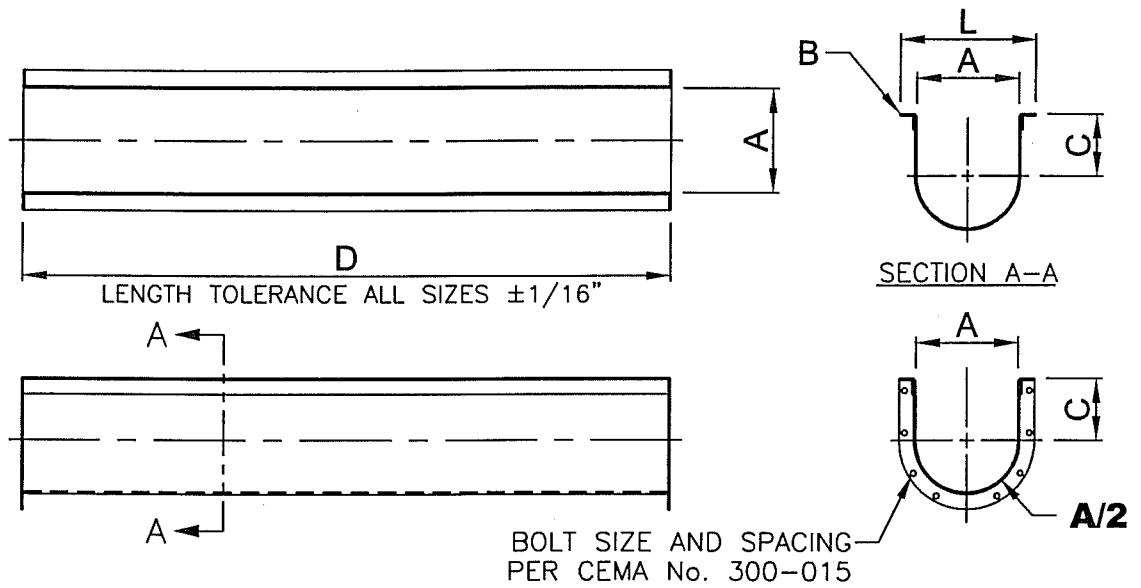


STYLE 1 (ADJUSTABLE)



STYLE 2 (WELDED)

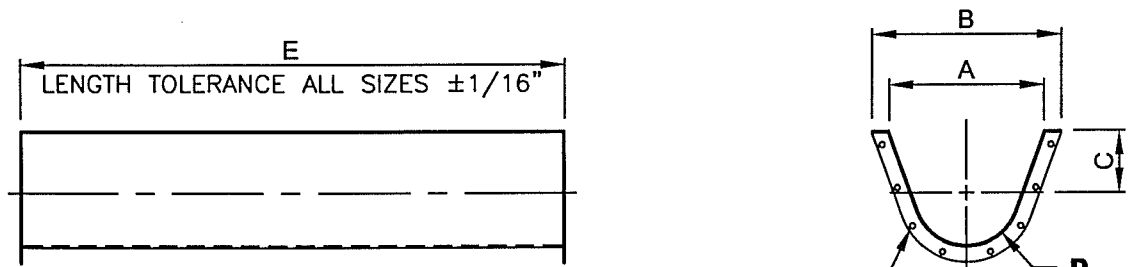
CONVEYOR DIAMETER	PIPE SIZE SCH. 40	A	B	C	D	F	G	J	K
6	2	3	2 1/16	1 13/16	1/4	1/2	1 7/16	2 3/8	5/8
9	2	4 1/2	2 3/4	3 5/16	1/4	1/2	1 1/2	2 3/8	5/8
	2 1/2	4 1/2	2 3/4	3 1/16	1/4	5/8	1 5/8	2 7/8	3/4
12	2 1/2	6	3 11/16	4 9/16	3/8	5/8	1 3/4	2 7/8	3/4
	3	6	3 11/16	4 1/4	3/8	5/8	1 7/8	3 1/2	3/4
	3 1/2	6	3 11/16	4	3/8	3/4	2	4	7/8
14	3	7	4 1/4	5 1/4	3/8	5/8	2	3 1/2	3/4
	3 1/2	7	4 1/4	5	3/8	3/4	2 1/8	4	7/8
16	3 1/2	8	4 15/16	6	3/8	3/4	2 1/4	4	7/8
18	3 1/2	9	5 3/8	7	3/8	3/4	2 1/8	4	7/8
20	3 1/2	10	6 1/8	8	3/8	3/4	2 7/16	4	7/8
24	4	12	7 3/8	9 3/4	1/2	7/8	2 11/16	4 1/2	1



SCREW DIA.	TROUGH THK.	A INSIDE	B SIZE OF ANGLES	C DROP	D STANDARD LENGTH	L MAXIMUM WIDTH
6	16	7	1 1/4 x 1 1/4 x 3/16"	4 1/2	10'-0"	9 11/16
	14					
	10					
9	14	10	1 1/2 x 1 1/2 x 3/16"	6 1/8	10'-0"	13 3/8
	12					
	10					
	3/16"					
12	12	13	2 x 2 x 3/16"	7 3/4	12'-0"	17 1/2
	10					
	3/16"					
	1/4"					
14	12	15	2 x 2 x 3/16"	9 1/4	12'-0"	19 1/2
	10					
	3/16"					
	1/4"					
16	12	17	2 x 2 x 3/16"	10 5/8	12'-0"	21 1/2
	10					
	3/16"					
	1/4"					
18	10	19	2 1/2 x 2 1/2 x 1/4"	12 1/8	12'-0"	24 1/2
	3/16"					
	1/4"					
20	10	21	2 1/2 x 2 1/2 x 1/4"	13 1/2	12'-0"	26 1/2
	3/16"					
	1/4"					
24	10	25	2 1/2 x 2 1/2 x 1/4"	16 1/2	12'-0"	30 1/2
	3/16"					
	1/4"					

ANGLE U-TROUGH

CEMA STANDARD No. 300-009



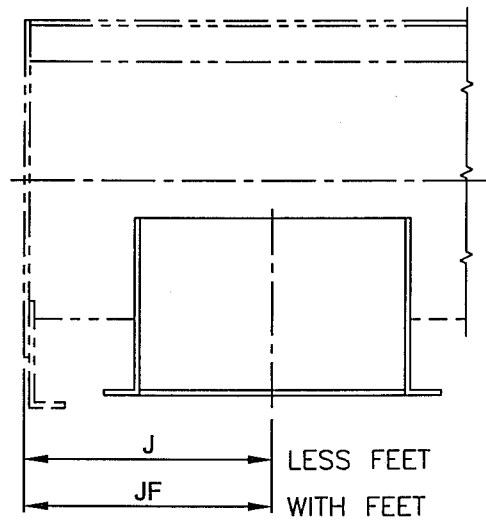
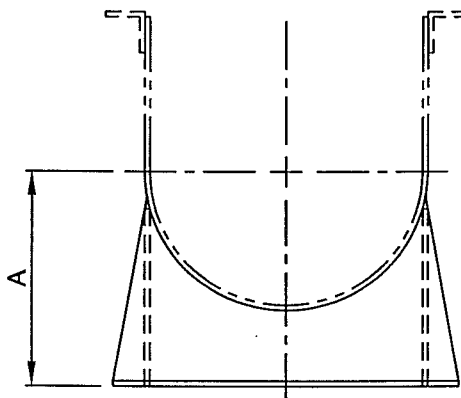
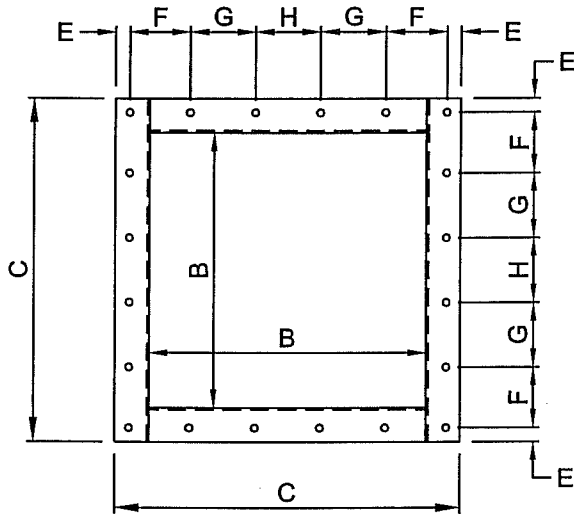
BOLT SIZE AND SPACING
PER CEMA No. 300-016

ANGLE OR PLATE
CONNECTING FLANGES

SCREW DIA.	TROUGH THK.	A INSIDE	B MAXIMUM WIDTH	C DROP	D INSIDE RADIUS	E STANDARD LENGTH
6	14	14	16 5/8	7	3 1/2	10'-0"
	10					
9	12	18	21 1/2	9	5	10'-0"
	3/16"					
12	10	22	26 1/2	10	6 1/2	12'-0"
	3/16"					
	1/4"					
14	10	24	28 1/2	11	7 1/2	12'-0"
	3/16"					
	1/4"					
16	10	28	32 1/2	11 1/2	8 1/2	12'-0"
	3/16"					
	1/4"					
18	3/16"	31	36 1/2	12 1/8	9 1/2	12'-0"
	1/4"					
20	3/16"	34	39 1/2	13 1/2	10 1/2	12'-0"
	1/4"					
24	3/16"	40	45 1/2	16 1/2	12 1/2	12'-0"
	1/4"					

FLARED TROUGH

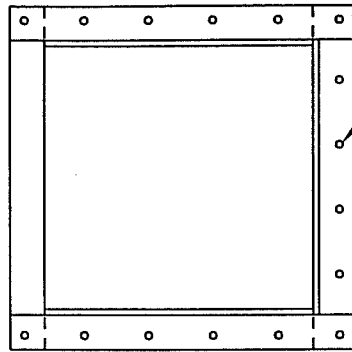
CEMA STANDARD No. 300-010



CONV. DIA. INCHES	THICKNESS		A	B	C	E	F	G	H	J	JF	P	R QTY.
	TROUGH	SPOUT											
6	16, 14 & 10	14	5	7	10	11/16	2 13/16	-	3	6	7 1/2	3/8	12
9	14, 12 & 10	14	7 1/8	10	13	1/2	4	-	4	8	10	3/8	12
	3/16	10											
12	12 & 10	12	8 7/8	13	17 1/4	7/8	5 1/8	-	5 1/4	10 1/2	12 1/2	3/8	12
	3/16 & 1/4	3/16											
14	12 & 10	12	10 1/8	15	19 1/4	7/8	3 1/2	3 1/2	3 1/2	11 1/2	13 1/2	3/8	20
	3/16 & 1/4	3/16											
16	12 & 10	12	11 1/8	17	21 1/4	7/8	3 3/4	4	4	13 1/2	14 1/2	3/8	20
	3/16 & 1/4	3/16											
18	10	12	12 3/8	19	24 1/4	1 1/8	4 7/16	4 3/8	4 3/8	14 1/2	16 1/2	1/2	20
	3/16 & 1/4	3/16											
20	10	12	13 3/8	21	26 1/4	1 1/8	4 7/8	4 3/4	4 3/4	15 1/2	17 1/2	1/2	20
	3/16 & 1/4	3/16											
24	10	12	15 3/8	25	30 1/4	1 1/8	5 5/8	5 5/8	5 1/2	17 1/2	20	1/2	20
	3/16 & 1/4	3/16											

CONVEYOR DISCHARGE SPOUTS, PLAIN

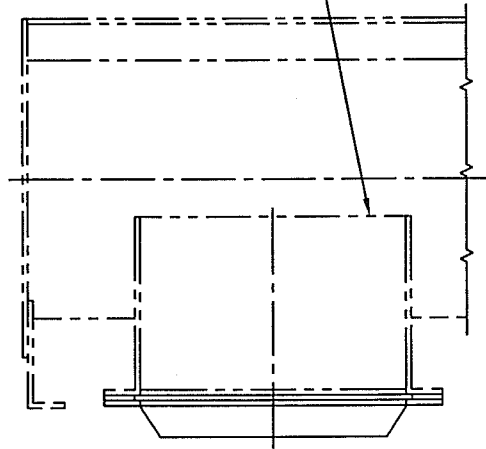
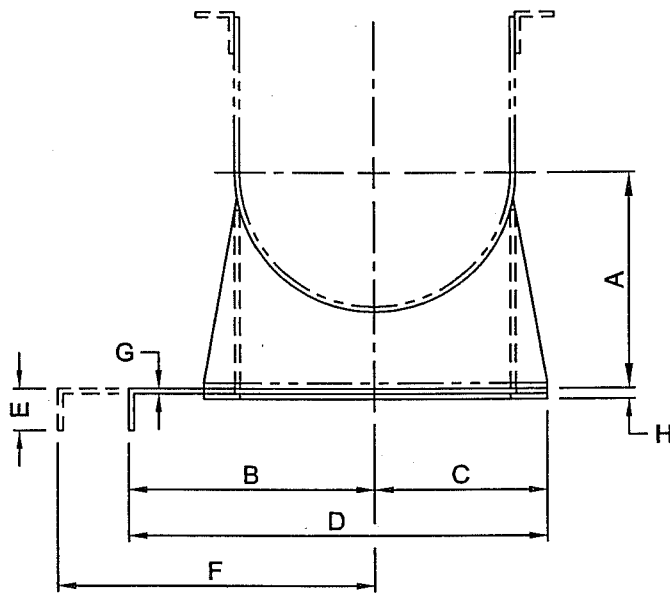
CEMA STANDARD No. 300-011



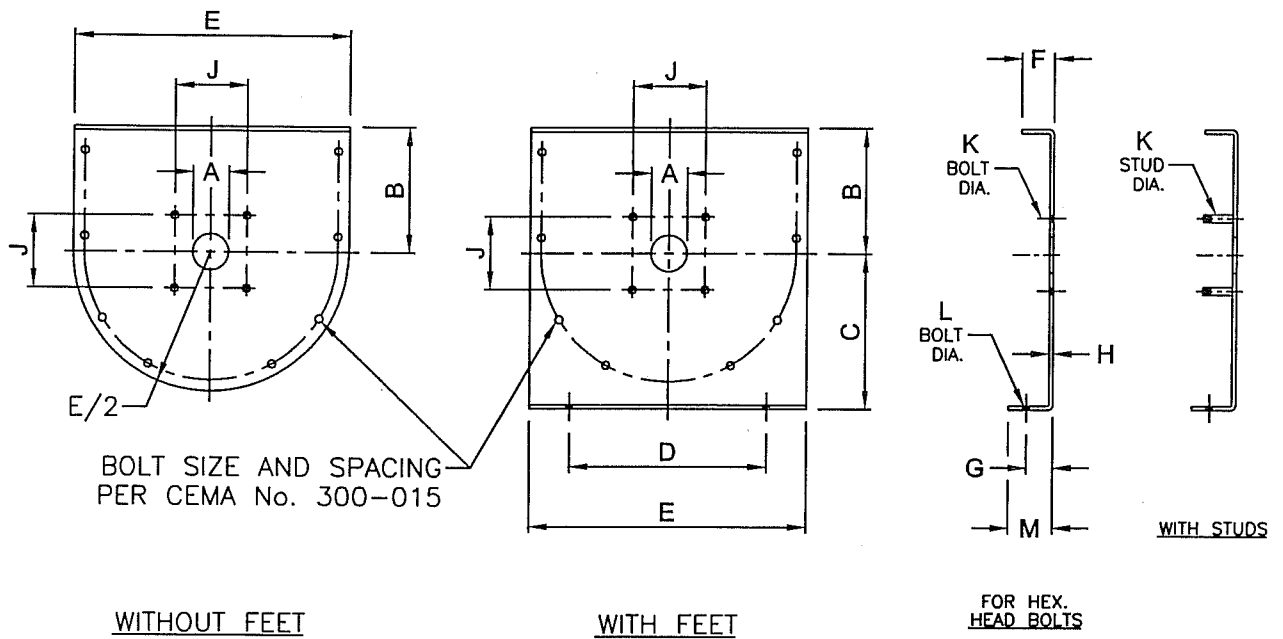
BOLT DIA. AND SPACING
PER CEMA No. 300-011

SLIDE HOLDER FRAME

DISCHARGE SPOUT
SPECIFICATIONS PER
CEMA No. 300-011



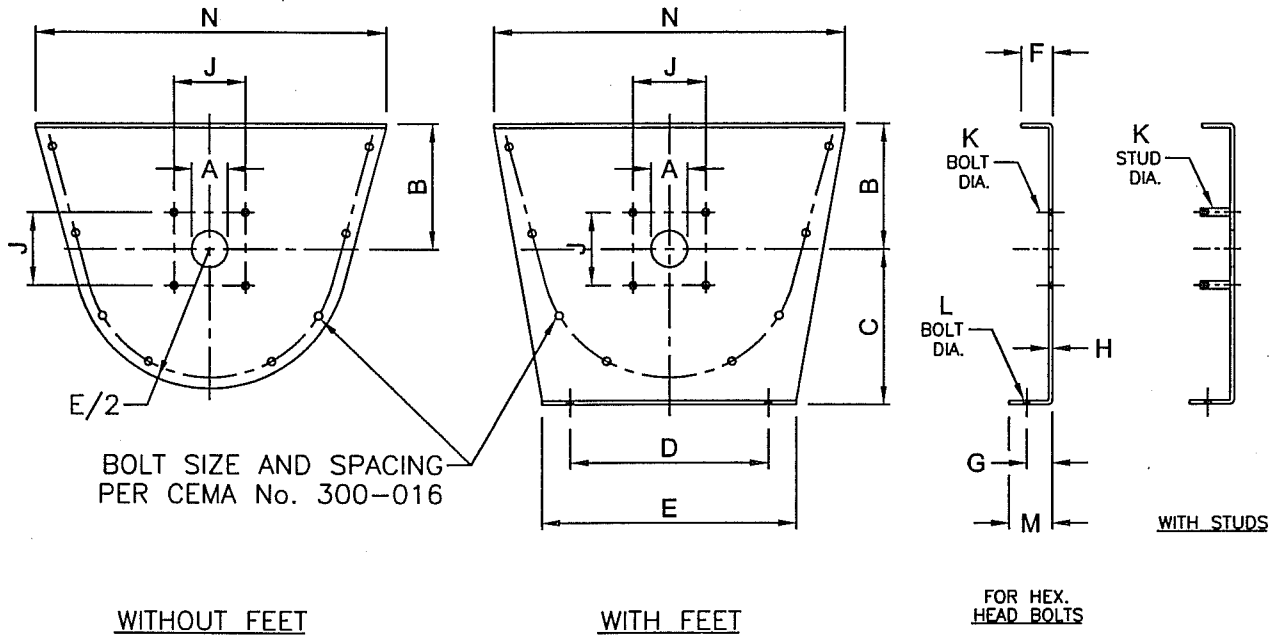
CONV. DIA. INCHES	THICKNESS		A	B	C	D	E	F	G	H
	TROUGH	SPOUT								
6	16, 14 & 10	14	5	6 5/8	3 3/4	10 3/8	2	14 1/8	12 GA	5/16
9	14, 12 & 10	14	7 1/8	8	5 3/8	13 3/8	2	18 3/4	12 GA	5/16
	3/16	10								
12	12 & 10	12	8 7/8	10 1/8	7 3/16	17 5/16	2	24 1/2	10 GA	5/16
	3/16 & 1/4	3/16								
14	12 & 10	12	10 1/8	11 1/4	8 3/16	19 7/16	2	27 5/8	10 GA	5/16
	3/16 & 1/4	3/16								
16	12 & 10	12	11 1/8	12 3/8	9 3/16	21 9/16	2	30 3/4	10 GA	5/16
	3/16 & 1/4	3/16								
18	10	12	12 3/8	13 3/8	10 3/16	23 9/16	2	33 3/4	10 GA	5/16
	3/16 & 1/4	3/16								
20	10	12	13 3/8	14 3/8	11 3/16	25 9/16	2	36 3/4	3/16	3/8
	3/16 & 1/4	3/16								
24	10	12	15 3/8	16 3/8	13 1/4	29 5/8	2	42 7/8	3/16	3/8
	3/16 & 1/4	3/16								



SCREW DIA.	SHAFT DIA.	A MINIMUM	B	C	D	E MINIMUM	F MINIMUM	G	H	J	K DIA.		L	M
											BOLT	STUD		
6	1 1/2	1 5/8	4 1/2	5 5/8	8 1/8	9 3/4	1 1/2	1	3/16	4	1/2	7/16	3/8	1 3/4
9	1 1/2	1 5/8	6 1/8	7 7/8	9 3/8	13 1/2	1 5/8	1 1/2	1/4	4	1/2	7/16	1/2	2 5/8
	2	2 1/8								5 1/8	5/8	9/16		
12	2	2 1/8	7 3/4	9 5/8	12 1/4	17 1/4	2	1 5/8	1/4	5 1/8	5/8	9/16	5/8	2 3/4
	2 7/16	2 9/16								5 5/8				
	3	3 1/8								6	3/4	3/4		
14	2 7/16	2 9/16	9 1/4	10 7/8	13 1/2	19 1/4	2	1 5/8	5/16	5 5/8	5/8	9/16	5/8	2 7/8
	3	3 1/8								6				
16	3	3 1/8	10 5/8	12	14 7/8	21 1/4	2 1/2	2	5/16	6	3/4	3/4	5/8	3 1/4
18	3	3 1/8	12 1/8	13 3/8	16	24 1/4	2 1/2	2	3/8	6	3/4	3/4	5/8	3 1/4
	3 7/16	3 9/16								6 3/4				
20	3	3 1/8	13 1/2	15	19 1/4	26 1/4	2 1/2	2 1/4	3/8	6	3/4	3/4	3/4	3 3/4
	3 7/16	3 9/16								6 3/4				
24	3 7/16	3 9/16	16 1/2	18 1/8	20	30 1/4	2 1/2	2 1/2	3/8	6 3/4	3/4	3/4	3/4	4 1/8

U-TROUGH END PLATES

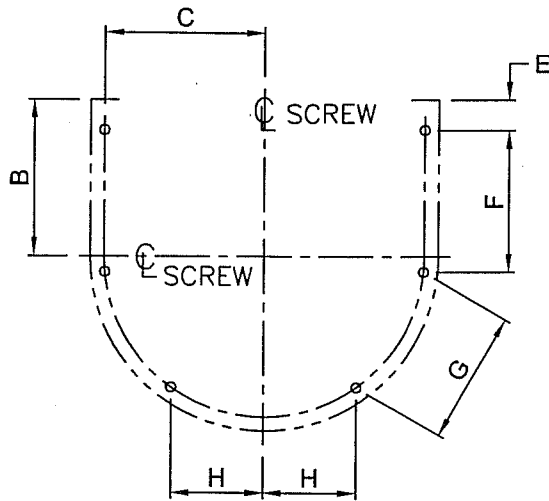
CEMA STANDARD No. 300-013



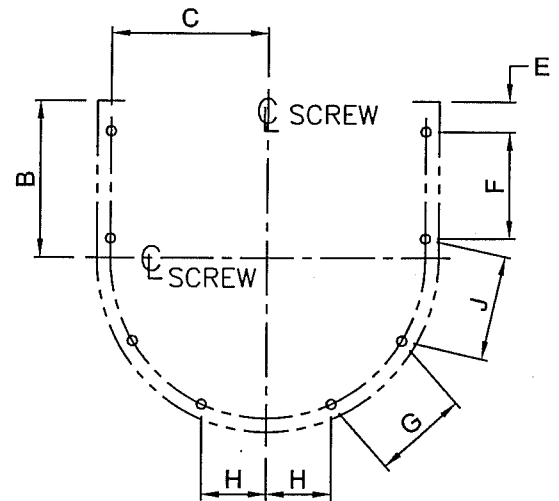
SCREW DIA.	SHAFT DIA.	A MINIMUM	B	C	D	E MINIMUM	F MINIMUM	G	H	J	K DIA.		L	M	N
											BOLT	STUD			
6	1 1/2	1 5/8	7	5 5/8	8 1/8	9 3/4	1 1/2	1	3/16	4	1/2	7/16	3/8	1 3/4	16 5/8
9	1 1/2	1 5/8	9	7 7/8	9 3/8	13 1/2	1 5/8	1 1/2	1/4	4	1/2	7/16	1/2	2 5/8	21 1/4
	2	2 1/8								5 1/8	5/8	9/16			
12	2	2 1/8	10	9 5/8	12 1/4	17 1/4	2	1 5/8	1/4	5 1/8	5/8	9/16	5/8	2 3/4	26 3/8
	2 7/16	2 9/16								5 5/8					
	3	3 1/8								6					
14	2 7/16	2 9/16	11	10 7/8	13 1/2	19 1/4	2	1 5/8	5/16	5 5/8	5/8	9/16	5/8	2 7/8	28 3/8
	3	3 1/8								6					
16	3	3 1/8	11 1/2	12	14 7/8	21 1/4	2 1/2	2	5/16	6	3/4	3/4	5/8	3 1/4	32 1/2
18	3	3 1/8	12 1/8	13 3/8	16	24 1/4	2 1/2	2	3/8	6	3/4	3/4	5/8	3 1/4	36 1/2
	3 7/16	3 9/16								6 3/4					
20	3	3 1/8	13 1/2	15	19 1/4	26 1/4	2 1/2	2 1/4	3/8	6	3/4	3/4	3/4	3 3/4	39 1/2
	3 7/16	3 9/16								6 3/4					
24	3 7/16	3 9/16	16 1/2	18 1/8	20	30 1/4	2 1/2	2 1/2	3/8	6 3/4	3/4	3/4	3/4	4 1/8	45 1/2

FLARED TROUGH END PLATES

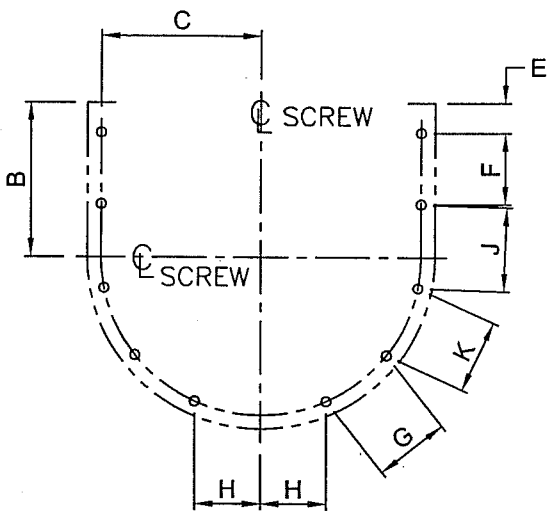
CEMA STANDARD No. 300-014



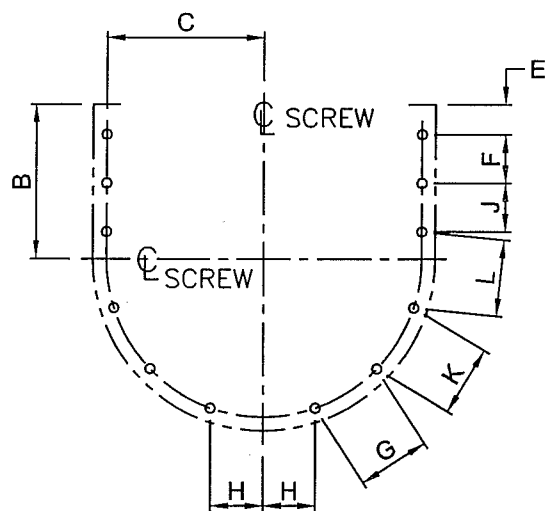
6 HOLE FLANGE CONNECTION



8 HOLE FLANGE CONNECTION

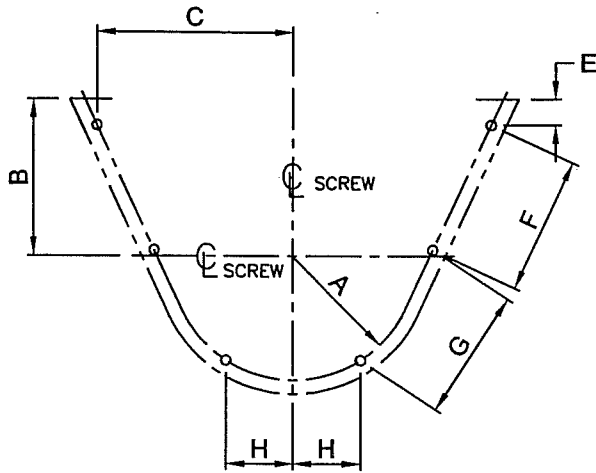


10 HOLE FLANGE CONNECTION

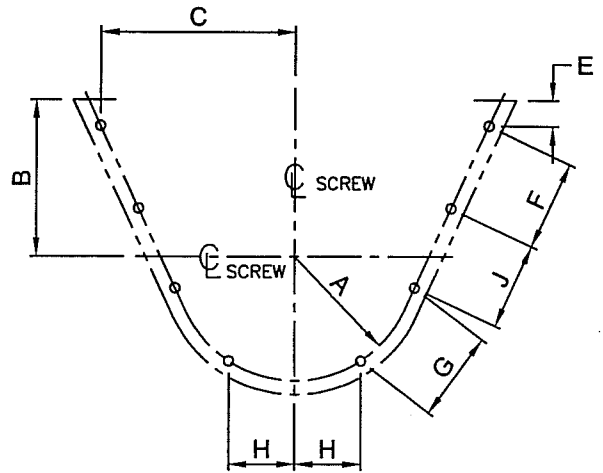


12 HOLE FLANGE CONNECTION

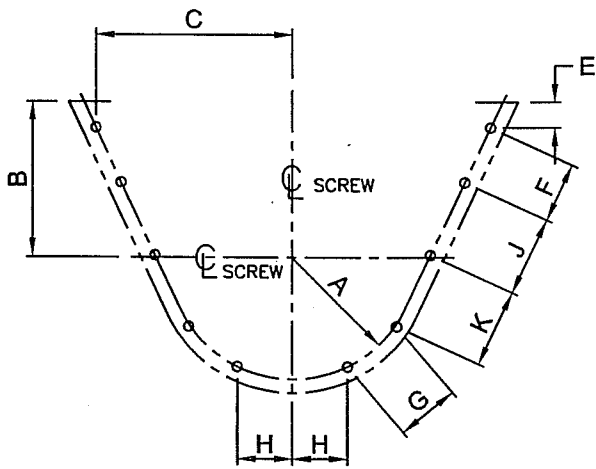
SCREW DIAMETER INCHES	BOLTS		B	C	E	F	G	H	J	K	L
	DIA. INCHES	HOLES									
6	3/8	6	4 1/2	4 7/16	1 1/32	4 1/8	4 1/16	2 1/32	-	-	-
9	3/8	8	6 1/8	6 1/4	1 3/16	4 1/8	3 3/4	2 9/16	4 1/8	-	-
12	1/2	8	7 3/4	7 15/16	1 1/2	5 5/16	4 1/16	3 7/8	5 3/16	-	-
14	1/2	8	9 1/4	8 15/16	2 17/32	5 5/8	5 15/16	3	5 15/16	-	-
16	5/8	8	10 5/8	10	2 5/8	6 3/8	6 5/8	3 3/4	6 5/8	-	-
18	5/8	10	12 1/8	11	2 23/32	5 15/16	5 7/8	2 15/16	5 7/8	5 7/8	-
20	5/8	10	13 1/2	12 3/16	2 25/32	6 1/4	6 11/16	3 11/32	6 11/16	6 11/16	-
24	5/8	12	16 1/2	14 1/4	2 25/32	6 1/8	6 5/8	3 5/16	6 5/8	6 5/8	6 5/8



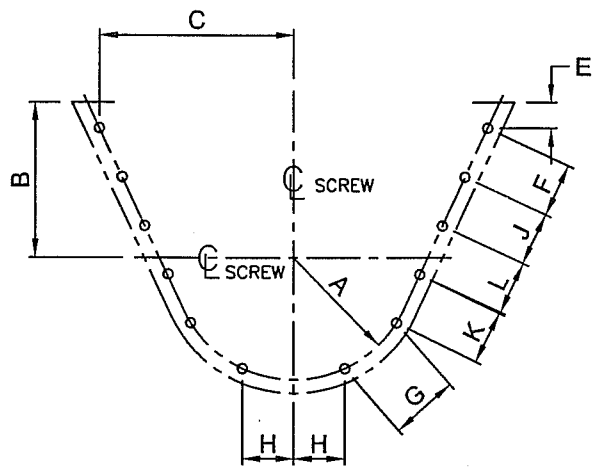
6 HOLE FLANGE CONNECTION



8 HOLE FLANGE CONNECTION

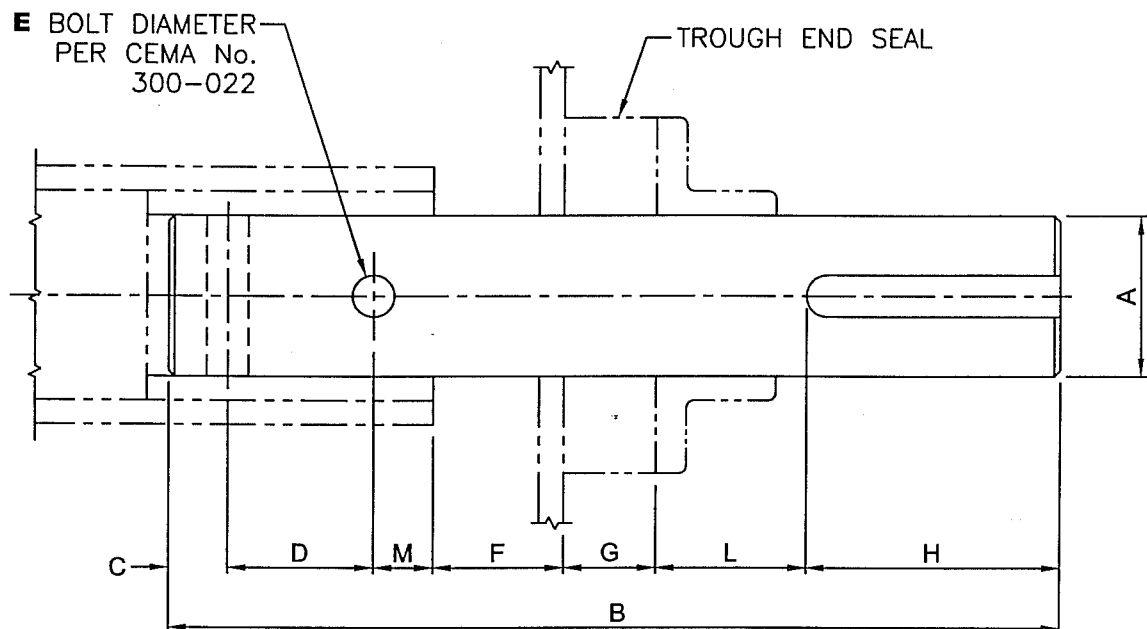


10 HOLE FLANGE CONNECTION



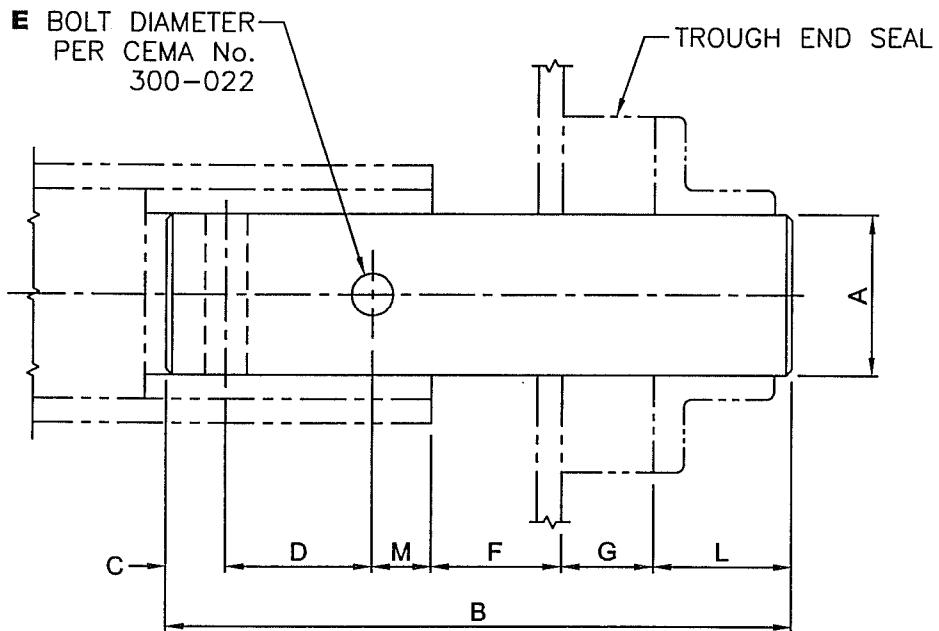
12 HOLE FLANGE CONNECTION

SCREW DIAMETER INCHES	BOLTS		A	B	C	E	F	G	H	J	K	L
	DIA. INCHES	HOLES										
6	3/8	6	4 7/16	7	7 3/16	1 27/32	5 1/4	5 1/4	2 1/32	-	-	-
9	3/8	8	6 1/4	9	9 21/32	1 43/64	5	5	2 9/16	5	-	-
12	1/2	8	7 15/16	10	11 13/16	1 13/16	5 3/4	5 3/4	3 7/8	5 3/4	-	-
14	1/2	10	8 15/16	11	12 49/64	2 1/16	5 1/8	5 1/8	3	5 1/8	5 1/8	-
16	5/8	10	10	11 1/2	14 11/16	2 15/64	5 1/2	5 1/2	3 3/4	5 1/2	5 1/2	-
18	5/8	10	11	12 1/8	16	2 5/8	6 3/16	6 3/16	2 15/16	6 3/16	6 3/16	-
20	5/8	10	12 3/16	13 1/2	17 7/8	2 9/32	7	7	3 11/32	7	7	-
24	5/8	12	14 1/4	16 1/2	20 61/64	2 5/16	6 7/8	6 7/8	3 5/16	6 7/8	6 7/8	6 7/8



A	B				C	D	E	F*	G	H	L		M
	FOR BAB BEARING		FOR BALL BEARING								FOR BAB BEARING	FOR BALL BEARING	
	WITH SEAL	WITHOUT SEAL	WITH SEAL	WITHOUT SEAL									
INCHES													
1 1/2	14 1/4	12 1/2	13 1/4	11 1/2	7/8	3	17/32	1 1/4	1 3/4	3 1/4	3 1/4	2 1/4	7/8
2	16 1/2	14 3/4	14 7/8	13 1/8	7/8	3	21/32	1 1/4	1 3/4	4 1/2	4 1/4	2 5/8	7/8
2 7/16	19 1/8	17 3/8	16 7/8	15 1/8	15/16	3	21/32	1 13/16	1 3/4	5 1/2	5 3/16	2 15/16	15/16
3	20 7/8	19 1/8	18 3/8	16 5/8	1	3	25/32	1 7/8	1 3/4	6	6 1/4	3 3/4	1
3 7/16	25 7/8	23 5/8	22 7/8	20 5/8	1 1/4	4	29/32	2 3/8	2 1/4	7 1/4	7 1/4	4 1/4	1 1/2

* DIMENSION "F" IS EQUAL TO ONE HALF (1/2) THE HANGER BEARING SPACE PLUS THE THICKNESS OF THE TROUGH END PLATE FROM CEMA STANDARD No. 300-013 OR 300-014. WHERE MORE THAN ONE THICKNESS IS SHOWN ON THESE STANDARDS FOR THE SAME SHAFT SIZE, THE GREATER THICKNESS HAS BEEN USED.

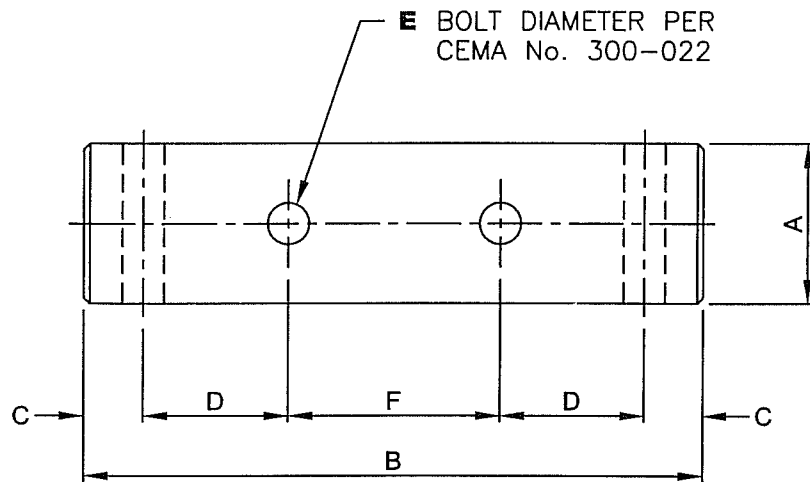


A	B				C	D	E	F*	G	L		M
	FOR BAB BEARING		FOR BALL BEARING							FOR BAB BEARING	FOR BALL BEARING	
	WITH SEAL	WITHOUT SEAL	WITH SEAL	WITHOUT SEAL								
INCHES												
1 1/2	11	9 1/4	10	8 1/4	7/8	3	17/32	1 1/4	1 3/4	3 1/4	2 1/4	7/8
2	12	10 1/4	10 3/8	8 5/8	7/8	3	21/32	1 1/4	1 3/4	4 1/4	2 5/8	7/8
2 7/16	13 5/8	11 7/8	11 3/8	9 5/8	15/16	3	21/32	1 13/16	1 3/4	5 3/16	2 15/16	15/16
3	14 7/8	13 1/8	12 3/8	10 5/8	1	3	25/32	1 7/8	1 3/4	6 1/4	3 3/4	1
3 7/16	18 5/8	16 3/8	15 5/8	13 3/8	1 1/4	4	29/32	2 3/8	2 1/4	7 1/4	4 1/4	1 1/2

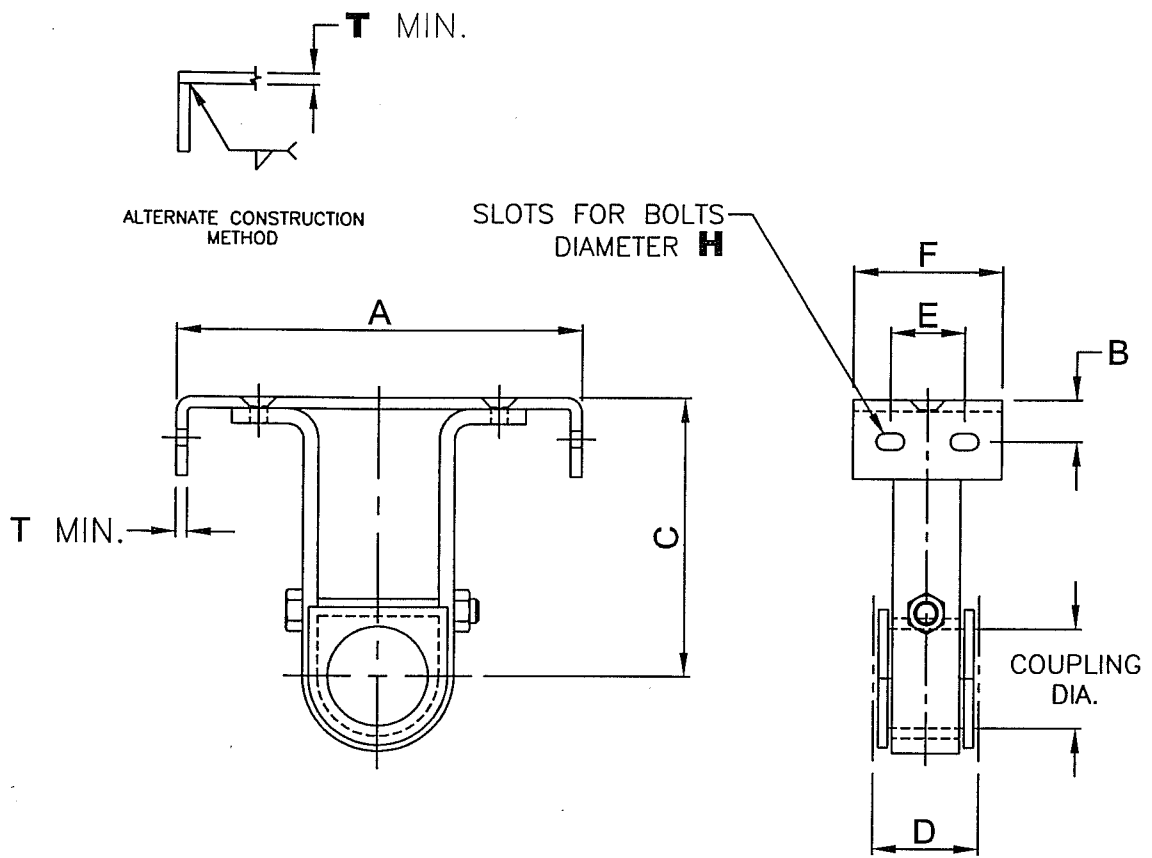
* DIMENSION "F" IS EQUAL TO ONE HALF (1/2) THE HANGER BEARING SPACE PLUS THE THICKNESS OF THE TROUGH END PLATE FROM CEMA STANDARD No. 300-013 OR 300-014. WHERE MORE THAN ONE THICKNESS IS SHOWN ON THESE STANDARDS FOR THE SAME SHAFT SIZE, THE GREATER THICKNESS HAS BEEN USED.

END SHAFTS

CEMA STANDARD No. 300-018



A	B	C	D	E	F
1 1/2	11 1/2	7/8	3	17/32	3 3/4
2	11 1/2	7/8	3	21/32	3 3/4
2 7/16	12 3/4	15/16	3	21/32	4 7/8
3	13	1	3	25/32	5
3 7/16	17 1/2	1 1/4	4	29/32	7

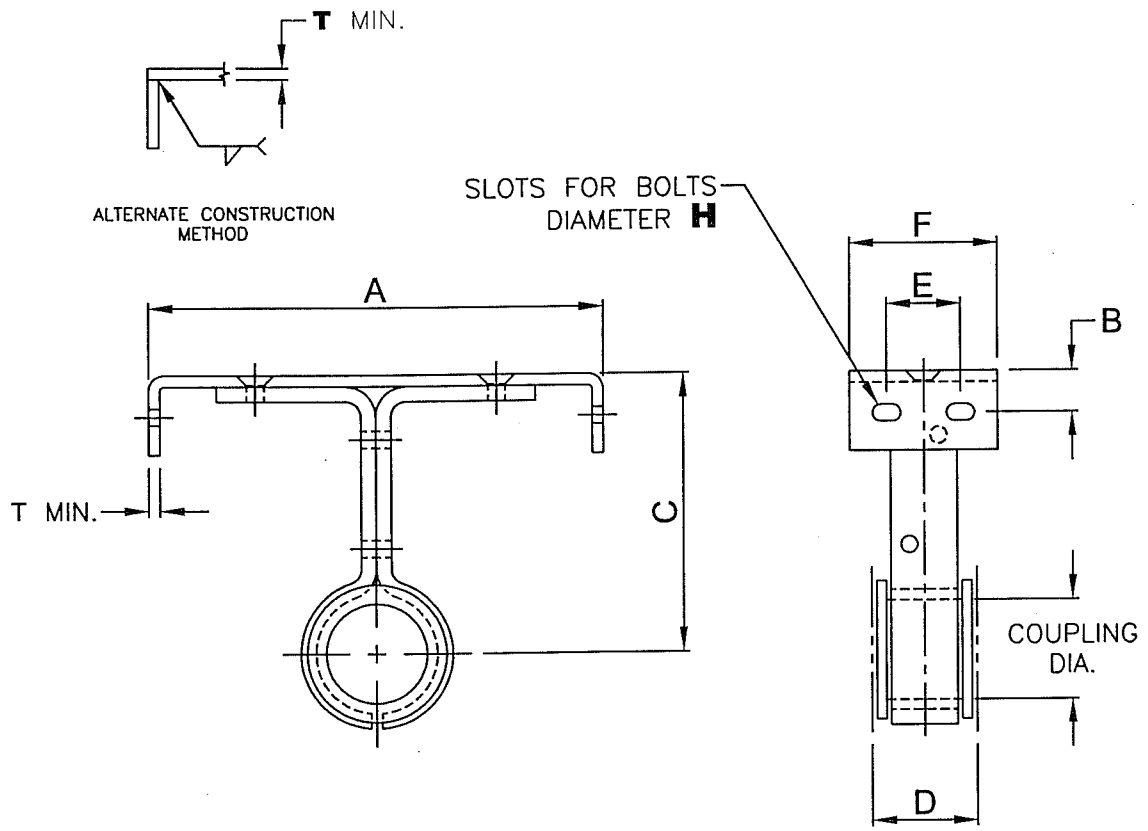


SCREW DIA.	COUPLING DIA.	A	B	C	D*	E	F**	H	T
6	1 1/2	7	3/4	4 1/2	2	2 1/2	5	3/8	3/16
9	1 1/2	10	1	6 1/8	2	2 1/2	5	3/8	3/16
	2								
12	2	13	1 1/4	7 3/4	2	2 1/2	5	1/2	3/8
	2 7/16				3				
	3								
14	2 7/16	15	1 3/8	9 1/4	3	2 1/2	5	1/2	3/8
	3								
16	3	17	1 3/8	10 5/8	3	2 1/2	5	1/2	3/8
18	3	19	1 5/8	12 1/8	3	3 1/2	6	5/8	1/2
	3 7/16				4				
20	3	21	1 5/8	13 1/2	3	3 1/2	6	5/8	1/2
	3 7/16				4				
24	3 7/16	25	1 3/4	16 1/2	4	3 1/2	6	5/8	1/2

* D DIMENSION IS THE SPACE ALLOWED ON COUPLINGS. BEARING WIDTH WILL ALWAYS BE LESS THAN THIS DIMENSION.
 ** F DIMENSION MAY VARY WITH DIFFERENT MANUFACTURERS, BUT WILL NOT EXCEED THE DIMENSION STATED.

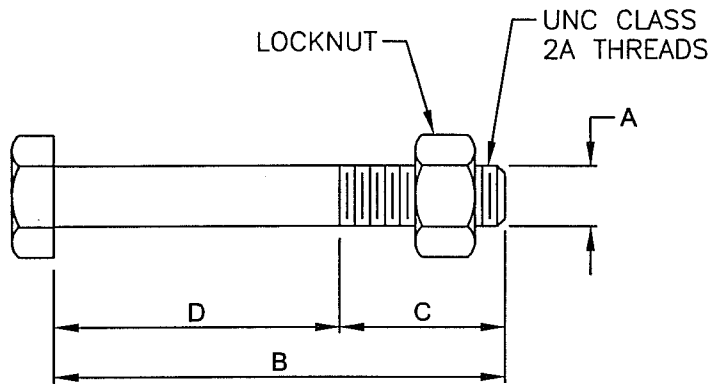
TYPE 216 HANGERS

CEMA STANDARD No. 300-020

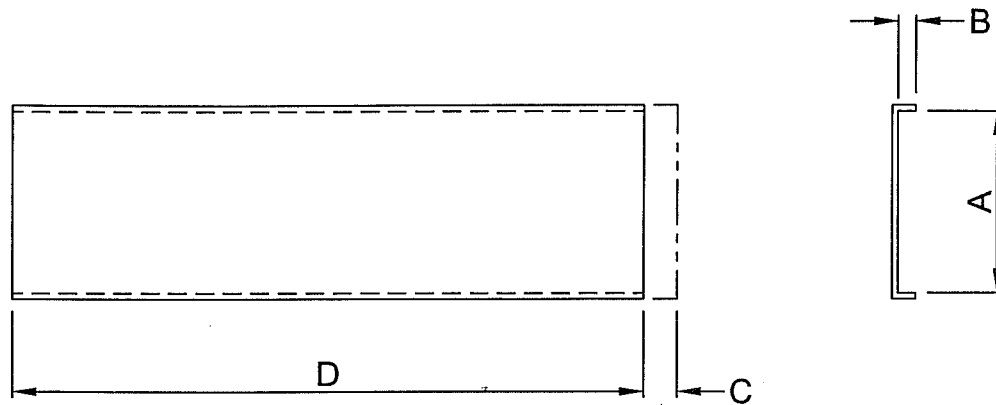


SCREW DIA.	COUPLING DIA.	A	B	C	D*	E	F**	H	T
6	1 1/2	7	3/4	4 1/2	2	2 1/2	5	3/8	3/16
9	1 1/2	10	1	6 1/8	2	2 1/2	5	3/8	3/16
	2								
12	2	13	1 1/4	7 3/4	2	2 1/2	5	1/2	3/8
	2 7/16				3				
	3								
14	2 7/16	15	1 3/8	9 1/4	3	2 1/2	5	1/2	3/8
	3								
16	3	17	1 3/8	10 5/8	3	2 1/2	5	1/2	3/8
18	3	19	1 5/8	12 1/8	3	3 1/2	6	5/8	1/2
	3 7/16				4				
20	3	21	1 5/8	13 1/2	3	3 1/2	6	5/8	1/2
	3 7/16				4				
24	3 7/16	25	1 3/4	16 1/2	4	3 1/2	6	5/8	1/2

* D DIMENSION IS THE SPACE ALLOWED ON COUPLINGS. BEARING WIDTH WILL ALWAYS BE LESS THAN THIS DIMENSION.
 ** F DIMENSION MAY VARY WITH DIFFERENT MANUFACTURERS, BUT WILL NOT EXCEED THE DIMENSION STATED.

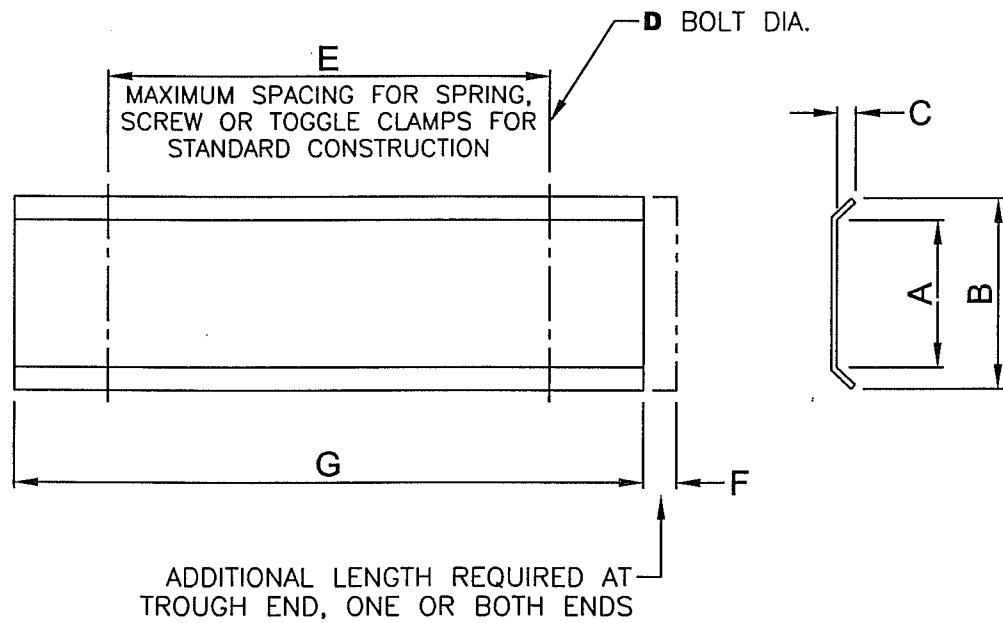


COUPLING DIAMETER	PIPE SIZE	PIPE O.D.	A	B	C	D
1 1/2	2	2 3/8	1/2	3	3/4	2 1/4
2	2 1/2	2 7/8	5/8	3 5/8	7/8	2 3/4
2 7/16	3	3 1/2	5/8	4 3/8	1	3 3/8
3	3 1/2	4	3/4	5	1 1/8	3 7/8
3	4	4 1/2	3/4	5 1/2	1 1/8	4 3/8
3 7/16	4	4 1/2	7/8	5 1/2	1 1/8	4 3/8

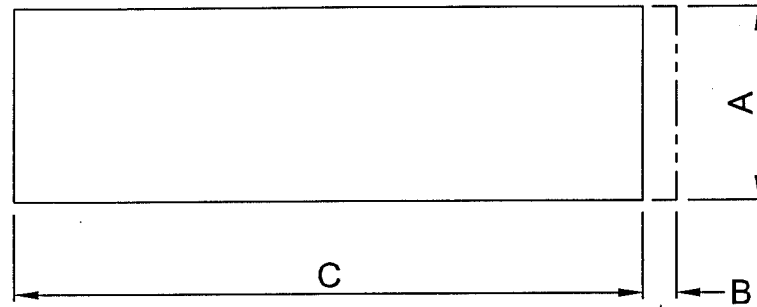


ADDITIONAL LENGTH REQUIRED AT TROUGH END, ONE OR BOTH ENDS

CONVEYOR DIAMETER	MINIMUM COVER THICKNESS	A MINIMUM	B MINIMUM	C	D STANDARD LENGTH
6	16	9 7/8	1/2	1 1/2	10'-0"
9	16	13 1/2	1/2	1 5/8	10'-0"
12	14	17 1/2	1/2	2	12'-0"
14	14	19 1/2	1/2	2	12'-0"
16	14	21 1/2	1/2	2 1/2	12'-0"
18	14	24 1/2	1/2	2 1/2	12'-0"
20	14	26 1/2	1/2	2 1/2	12'-0"
24	12	30 1/2	1/2	2 1/2	12'-0"

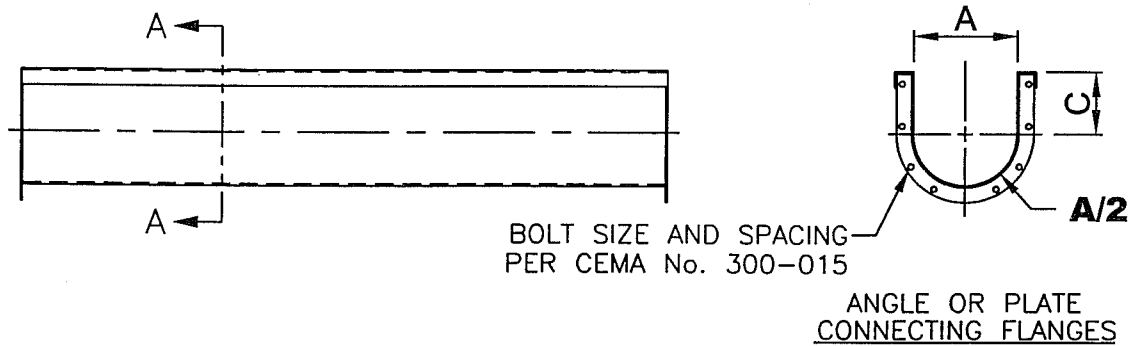
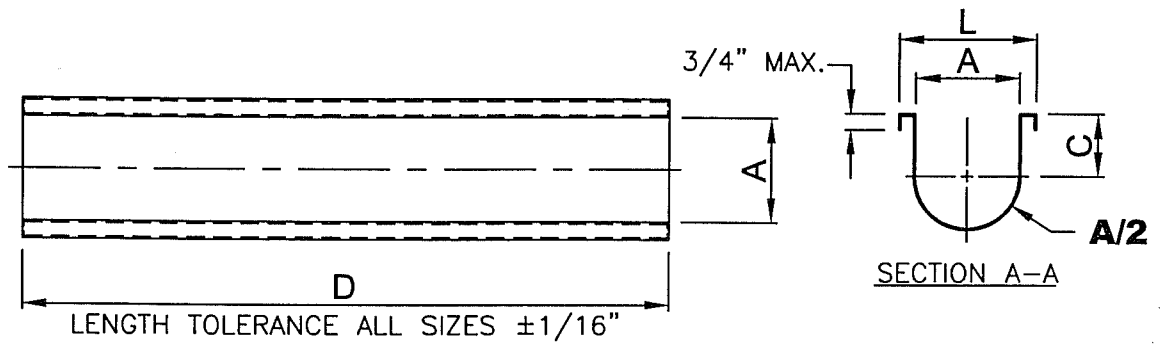


CONVEYOR DIAMETER	MINIMUM COVER THICK.	A MINIMUM	B MAXIMUM	C	D MINIMUM	E	F	G STANDARD LENGTH
6	16	9 11/16	10 7/8	3/16	1/4	60	1 1/2	10'-0"
9	16	13 3/8	14 5/8	3/16	1/4	60	1 5/8	10'-0"
12	14	17 1/2	18 3/8	3/16	5/16	60	2	12'-0"
14	14	19 1/2	20 3/8	3/16	5/16	60	2	12'-0"
16	14	21 1/2	22 3/8	3/16	5/16	60	2 1/2	12'-0"
18	14	24 1/2	25 3/8	3/16	5/16	60	2 1/2	12'-0"
20	14	26 1/2	27 1/2	3/16	5/16	60	2 1/2	12'-0"
24	12	30 1/2	31 3/8	3/16	5/16	60	2 1/2	12'-0"



ADDITIONAL LENGTH REQUIRED AT TROUGH END, ONE OR BOTH ENDS

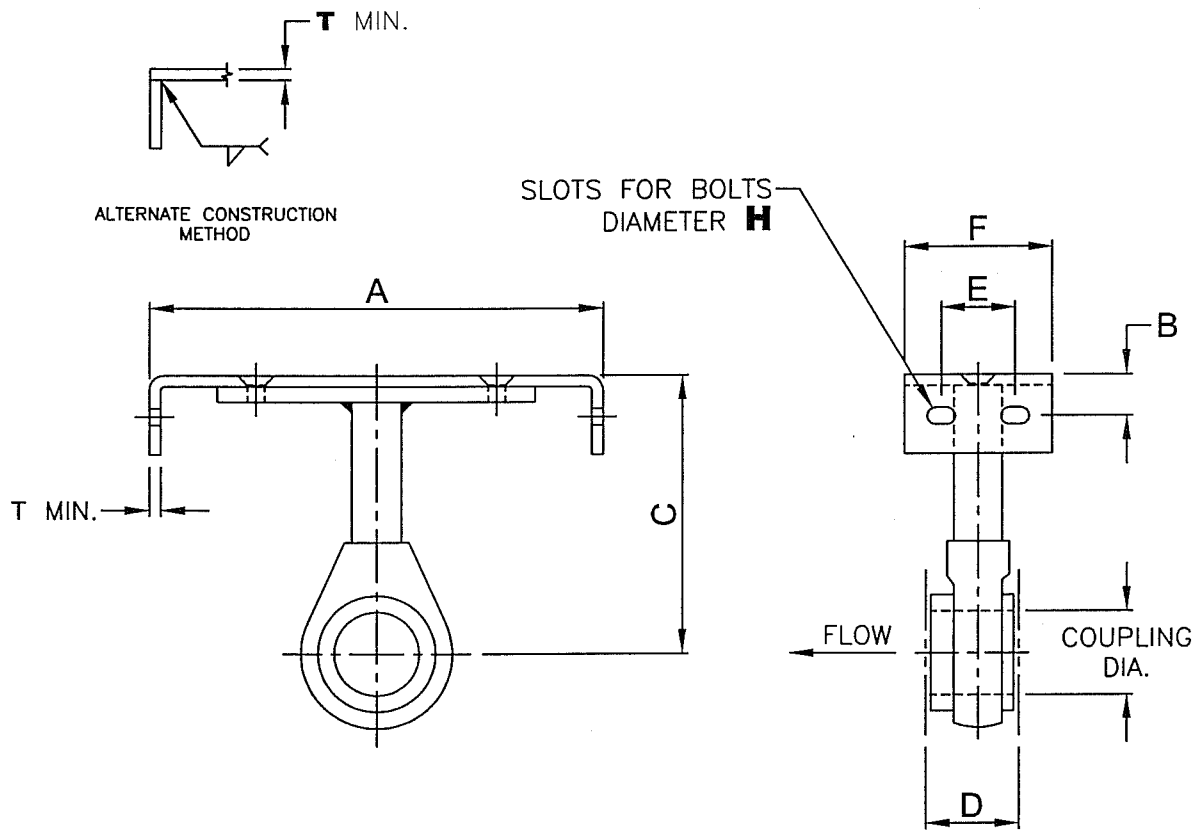
CONVEYOR DIAMETER	MINIMUM COVER THICKNESS	A	B	C STANDARD LENGTH
6	16	9 11/16	1 1/2	10'-0"
9	14	13 3/8	1 5/8	10'-0"
12	14	17 1/2	2	12'-0"
14	14	19 1/2	2	12'-0"
16	14	21 1/2	2 1/2	12'-0"
18	12	24 1/2	2 1/2	12'-0"
20	12	26 1/2	2 1/2	12'-0"
24	12	30 1/2	2 1/2	12'-0"



SCREW DIA.	MATL. GAUGE	PART NUMBER	A INSIDE	C DROP	D STANDARD LENGTH	L MAXIMUM WIDTH
6	16	6DF16C	7	4 1/2	10'-0"	9 11/16
	14	6DF14C				
	10	6DF10C				
9	14	9DF14C	10	6 1/8	10'-0"	13 3/8
	12	9DF12C				
	10	9DF10C				
12	12	12DF12C	13	7 3/4	12'-0"	17 1/2
	10	12DF10C				
14	12	14DF12C	15	9 1/4	12'-0"	19 1/2
	10	14DF10C				
16	12	16DF12C	17	10 5/8	12'-0"	21 1/2
	10	16DF10C				
18	10	18DF10C	19	12 1/8	12'-0"	24 1/2
20	10	20DF10C	21	13 1/2	12'-0"	26 1/2
24	10	24DF10C	25	16 1/2	12'-0"	30 1/2

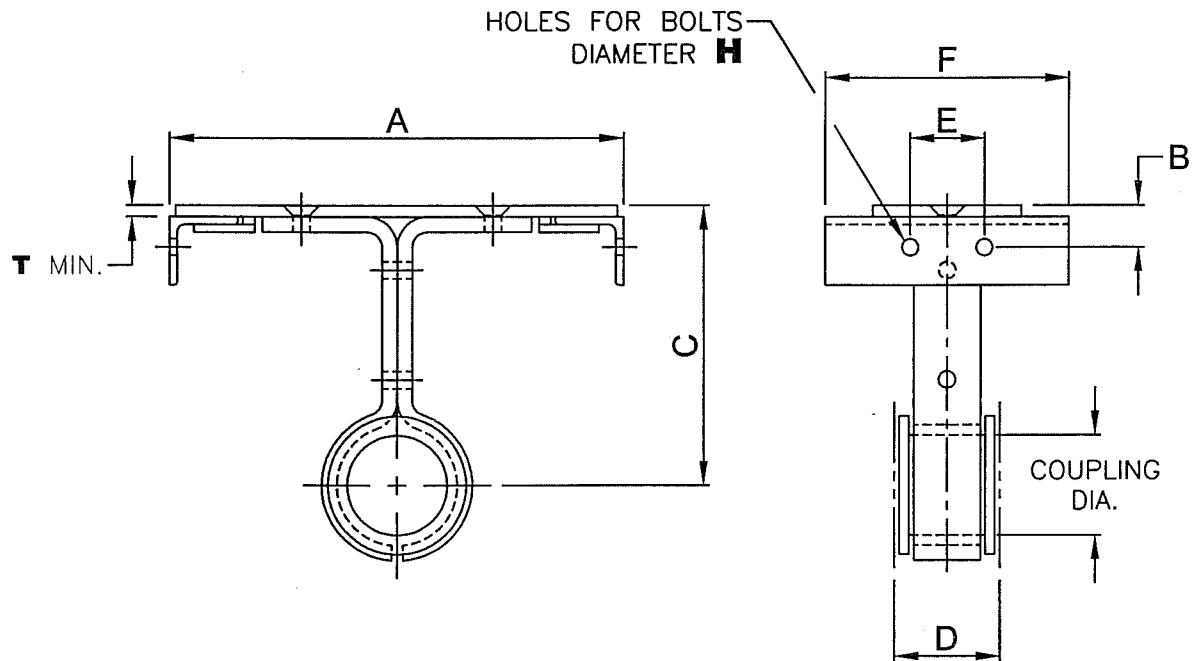
DOUBLE FLANGED U-TROUGHS

CEMA STANDARD No. 300-026



SCREW DIA.	COUPLING DIA.	A	B	C	D*	E	F**	H	T
6	1 1/2	7	3/4	4 1/2	2	2 1/2	5	3/8	3/16
9	1 1/2	10	1	6 1/8	2	2 1/2	5	3/8	3/16
	2								
12	2	13	1 1/4	7 3/4	2	2 1/2	5	1/2	3/8
	2 7/16				3				
	3								
14	2 7/16	15	1 3/8	9 1/4	3	2 1/2	5	1/2	3/8
	3								
16	3	17	1 3/8	10 5/8	3	2 1/2	5	1/2	3/8
18	3	19	1 5/8	12 1/8	3	3 1/2	6	5/8	1/2
	3 7/16				4				
20	3	21	1 5/8	13 1/2	3	3 1/2	6	5/8	1/2
	3 7/16				4				
24	3 7/16	25	1 3/4	16 1/2	4	3 1/2	6	5/8	1/2

* D DIMENSION IS THE SPACE ALLOWED ON COUPLINGS. BEARING WIDTH WILL ALWAYS BE LESS THAN THIS DIMENSION.
 ** F DIMENSION MAY VARY WITH DIFFERENT MANUFACTURERS, BUT WILL NOT EXCEED THE DIMENSION STATED.



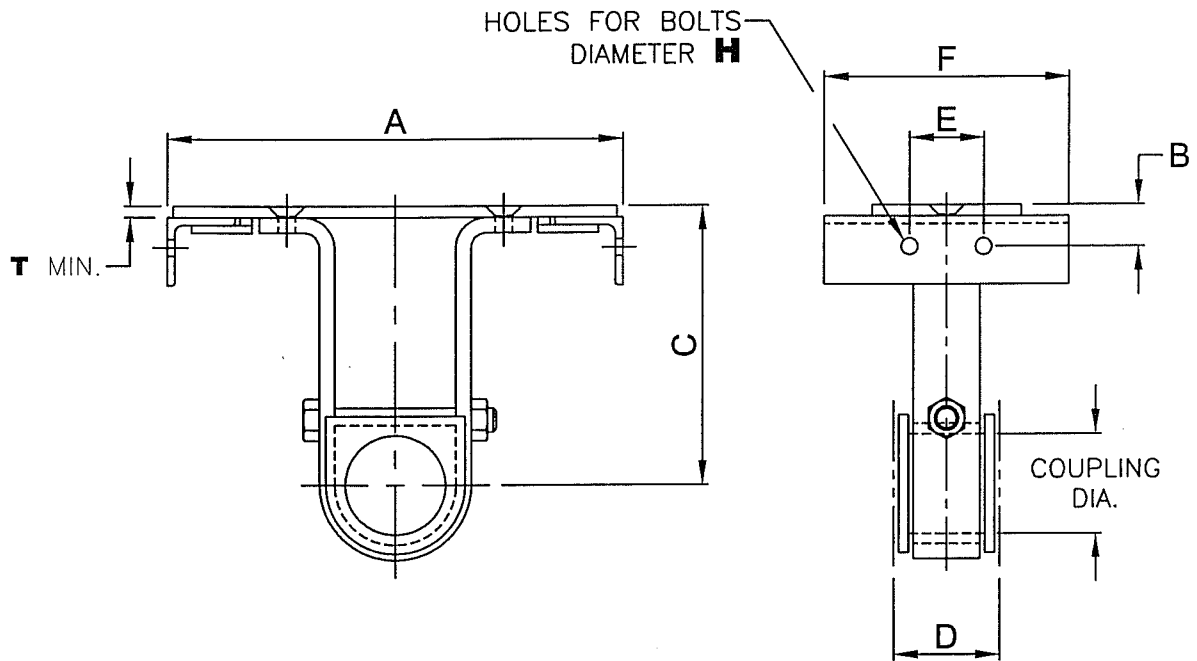
SCREW DIA.	COUPLING DIA.	A	B	C	D*	E	F**	H	T
6	1 1/2	7	3/4	4 1/2	2	2 1/2	6	3/8	3/16
9	1 1/2	10	1	6 1/8	2	2 1/2	6	3/8	3/16
	2								
12	2	13	1 1/4	7 3/4	2	2 1/2	6 1/2	1/2	3/8
	2 7/16				3				
	3								
14	2 7/16	15	1 3/8	9 1/4	3	2 1/2	6 1/2	1/2	3/8
	3								
16	3	17	1 3/8	10 5/8	3	2 1/2	8	1/2	3/8
18	3	19	1 5/8	12 1/8	3	3 1/2	8	5/8	1/2
	3 7/16				4				
20	3	21	1 5/8	13 1/2	3	3 1/2	8	5/8	1/2
	3 7/16				4				
24	3 7/16	25	1 3/4	16 1/2	4	3 1/2	8	5/8	1/2

* D DIMENSION IS THE SPACE ALLOWED ON COUPLINGS. BEARING WIDTH WILL ALWAYS BE LESS THAN THIS DIMENSION.

** F DIMENSION MAY VARY WITH DIFFERENT MANUFACTURERS, BUT WILL NOT EXCEED THE DIMENSION STATED.

TYPE 326 HANGERS

CEMA STANDARD No. 300-028



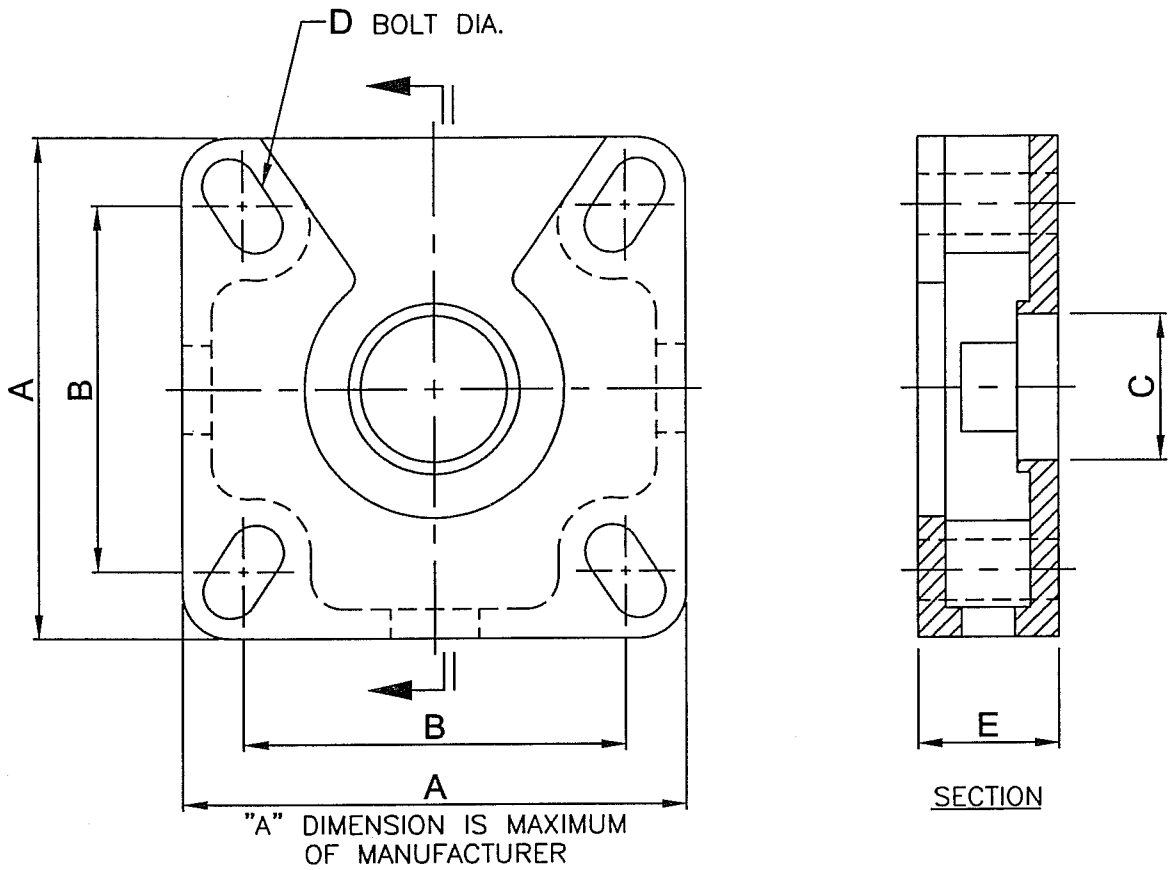
SCREW DIA.	COUPLING DIA.	A	B	C	D*	E	F**	H	T
6	1 1/2	7	3/4	4 1/2	2	2 1/2	6	3/8	3/16
9	1 1/2	10	1	6 1/8	2	2 1/2	6	3/8	3/16
	2								
12	2	13	1 1/4	7 3/4	2	2 1/2	6 1/2	1/2	3/8
	2 7/16				3				
	3								
14	2 7/16	15	1 3/8	9 1/4	3	2 1/2	6 1/2	1/2	3/8
	3								
16	3	17	1 3/8	10 5/8	3	2 1/2	8	1/2	3/8
18	3	19	1 5/8	12 1/8	3	3 1/2	8	5/8	1/2
	3 7/16				4				
20	3	21	1 5/8	13 1/2	3	3 1/2	8	5/8	1/2
	3 7/16				4				
24	3 7/16	25	1 3/4	16 1/2	4	3 1/2	8	5/8	1/2

* **D** DIMENSION IS THE SPACE ALLOWED ON COUPLINGS. BEARING WIDTH WILL ALWAYS BE LESS THAN THIS DIMENSION.

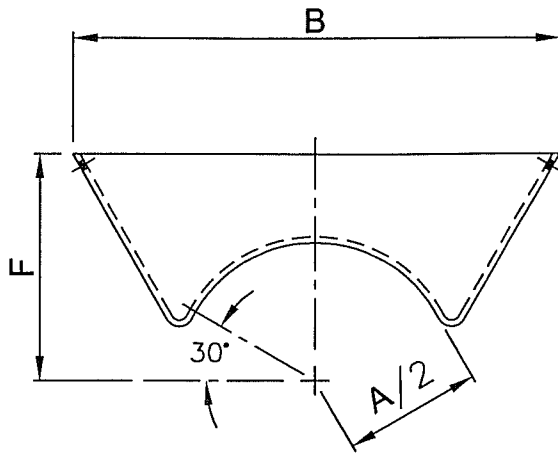
** **F** DIMENSION MAY VARY WITH DIFFERENT MANUFACTURERS, BUT WILL NOT EXCEED THE DIMENSION STATED.

TYPE 316 HANGERS

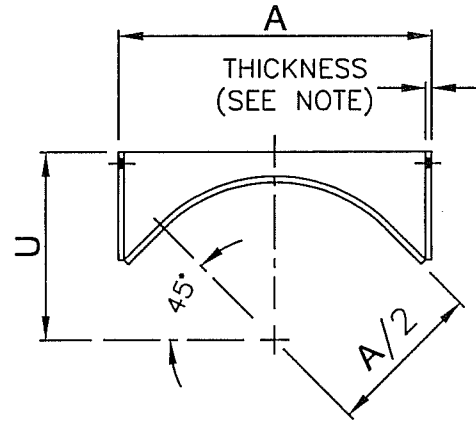
CEMA STANDARD No. 300-029



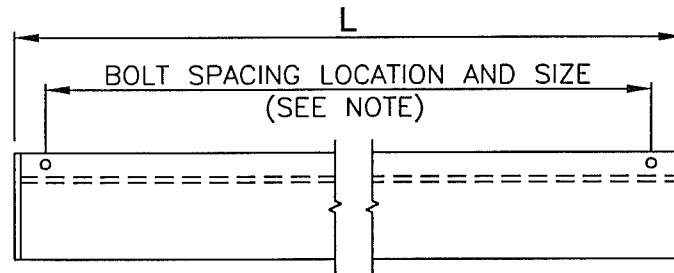
SHAFT DIA.	A MAXIMUM	B	C MINIMUM	D	E
1 1/2	5 3/8	4	1 5/8	1/2	1 3/4
2	6 1/2	5 1/8	2 1/8	5/8	1 3/4
2 7/16	7 3/8	5 5/8	2 9/16	5/8	1 3/4
3	7 7/8	6	3 1/8	3/4	1 3/4
3 7/16	9 1/4	6 3/4	3 9/16	3/4	2 1/4



FLARED TROUGH



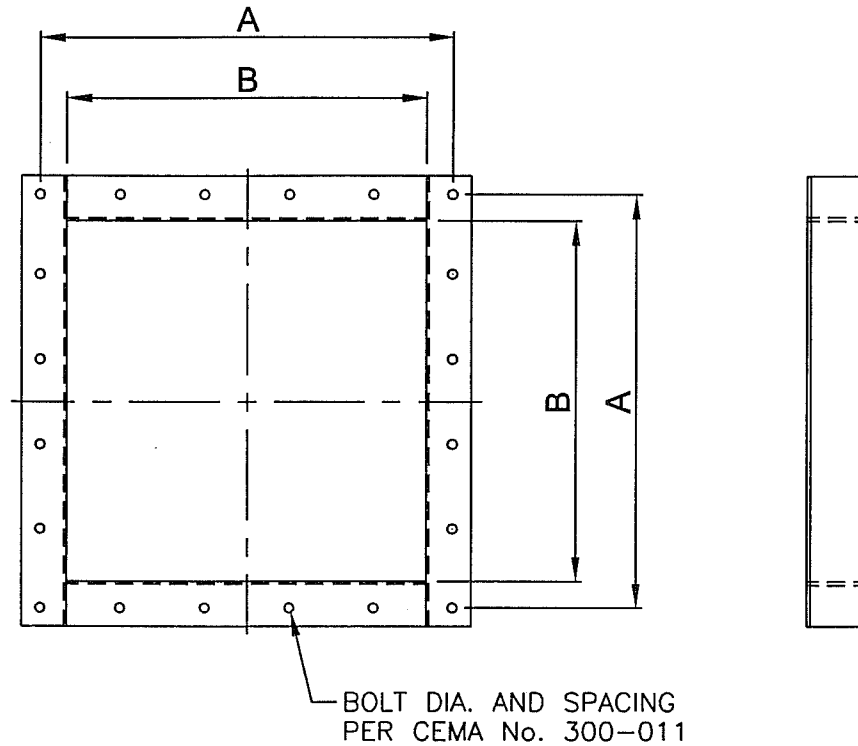
"U" TROUGH



SIDE VIEW

SCREW DIAMETER	A	B	F	L	U
6	7	14	7	12	4 1/2
9	10	18	9	18	6 1/8
12	13	22	10	24	7 3/4
14	15	24	11	28	9 1/4
16	17	28	11 1/2	32	10 5/8
18	19	31	12 1/8	36	12 1/8
20	21	34	13 1/2	40	13 1/2
24	25	40	16 1/2	48	16 1/2

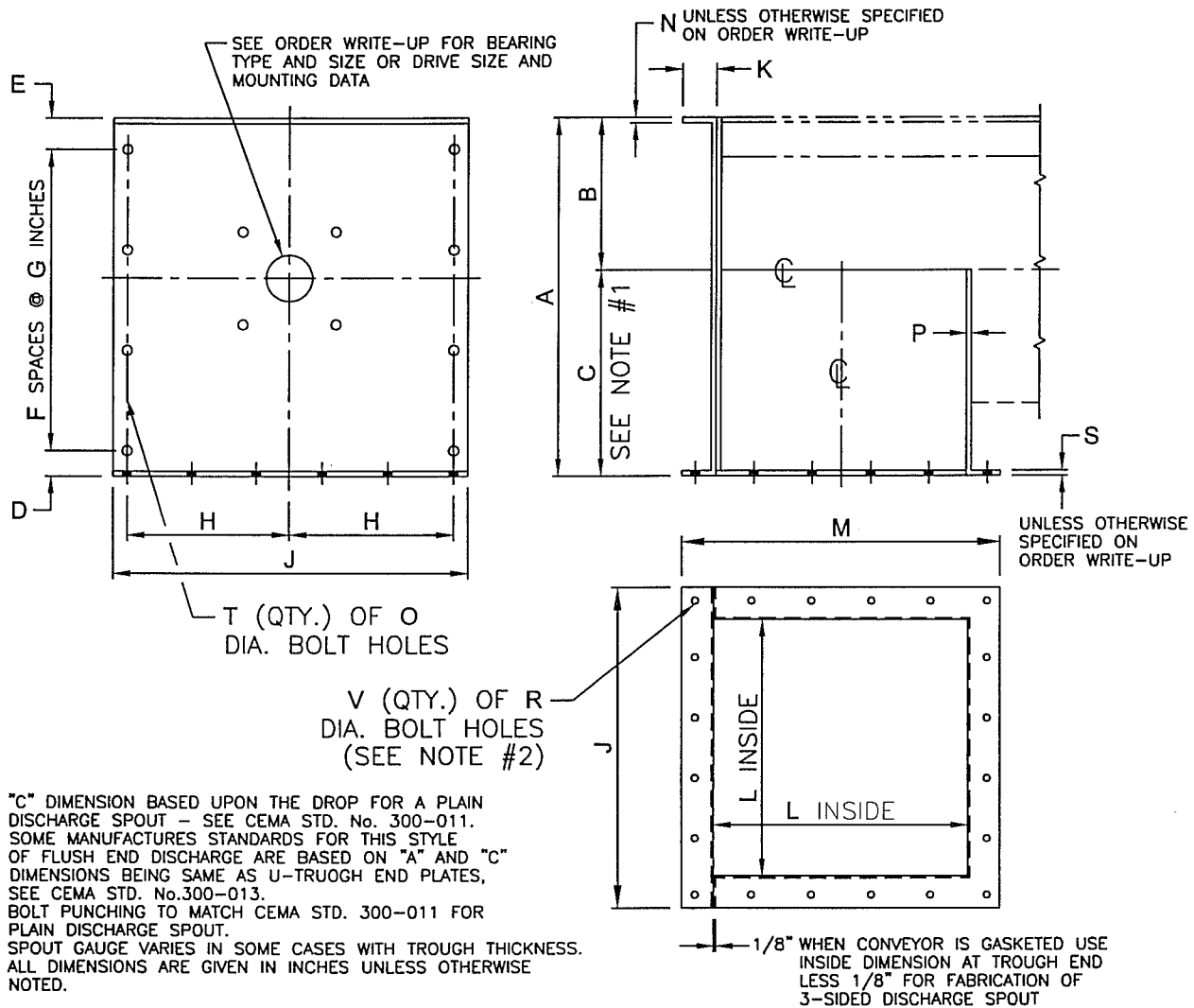
* NOTE : MATERIAL THICKNESS, BOLT HOLE SIZE AND BOLT HOLE LOCATION VARY AMONG MANUFACTURERS.



CONV. DIA. INCHES	THICKNESS		A	B
	TROUGH	INLET MINIMUM		
6	16, 14 & 10	16	8 5/8	7
9	14, 12, 10 & 3/16	14	12	10
12	12, 10, 3/16 & 1/4	12	15 1/2	13
14	12, 10, 3/16 & 1/4	12	17 1/2	15
16	12, 10, 3/16 & 1/4	12	19 1/2	17
18	10, 3/16 & 1/4	12	22	19
20	10, 3/16 & 1/4	12	24	21
24	10, 3/16 & 1/4	12	28	25

CONVEYOR INLET SPOUT, FLANGED

CEMA STANDARD No. 300-032



1. "C" DIMENSION BASED UPON THE DROP FOR A PLAIN DISCHARGE SPOUT - SEE CEMA STD. No. 300-011. SOME MANUFACTURES STANDARDS FOR THIS STYLE OF FLUSH END DISCHARGE ARE BASED ON "A" AND "C" DIMENSIONS BEING SAME AS U-TROUGH END PLATES, SEE CEMA STD. No.300-013.
2. BOLT PUNCHING TO MATCH CEMA STD. 300-011 FOR PLAIN DISCHARGE SPOUT.
3. SPOUT GAUGE VARIES IN SOME CASES WITH TROUGH THICKNESS.
4. ALL DIMENSIONS ARE GIVEN IN INCHES UNLESS OTHERWISE NOTED.

CONV. DIA. INCHES	THICKNESS		A	B	C	D	E	F	G	H	J	K	L	M	N	O	R	S	T	V
	TROUGH	P	INCHES																	THK.
6	16, 14 & 10	14	9 1/2	4 1/2	5	1 7/32	1 1/32	2	3 5/8	4 7/16	9 3/4	1 1/2	7	10	3/16	7/16	7/16	14	6	12
9	14, 12 & 10	14	13 1/4	6 1/8	7 1/8	1 3/16	1 3/16	3	3 5/8	6 1/4	13 1/2	1 5/8	10	13	1/4	7/16	7/16	14	8	12
	3/16	10																10		
12	12 & 10	12	16 5/8	7 3/4	8 7/8	1 1/4	1 1/2	3	4 5/8	7 15/16	17 1/4	2	13	17 1/4	1/4	9/16	7/16	12	8	12
	3/16 & 1/4	3/16																3/16		
14	12 & 10	12	19 3/8	9 1/4	10 1/8	2 19/32	2 17/32	3	4 3/4	8 15/16	19 1/4	2	15	19 1/4	5/16	9/16	7/16	12	8	20
	3/16 & 1/4	3/16																3/16		
16	12 & 10	12	21 3/4	10 5/8	11 1/8	2 5/8	2 5/8	3	5 1/2	10	21 1/4	2 1/2	17	21 1/4	5/16	11/16	7/16	12	8	20
	3/16 & 1/4	3/16																3/16		
18	10	12	24 1/2	12 1/8	12 3/8	2 17/32	2 23/32	4	4 13/16	11	24 1/4	2 1/2	19	24 1/4	3/8	11/16	9/16	12	10	20
	3/16 & 1/4	3/16																3/16		
20	10	12	26 7/8	13 1/2	13 3/8	2 27/32	2 25/32	4	5 5/16	12 3/16	26 1/4	2 1/2	21	26 1/4	3/8	11/16	9/16	12	10	20
	3/16 & 1/4	3/16																3/16		
24	10	12	31 7/8	16 1/2	15 3/8	2 27/32	2 25/32	5	5 1/4	14 1/4	30 1/4	2 1/2	25	30 1/4	3/8	11/16	9/16	12	12	20
	3/16 & 1/4	3/16																3/16		



Conveyor Equipment Manufacturers Association

6724 Lone Oak Blvd.

Naples, Florida 34109

Ph: 941-514-3441

Fax: 941-514-3470

Web Site: <http://www.cemanet.org>